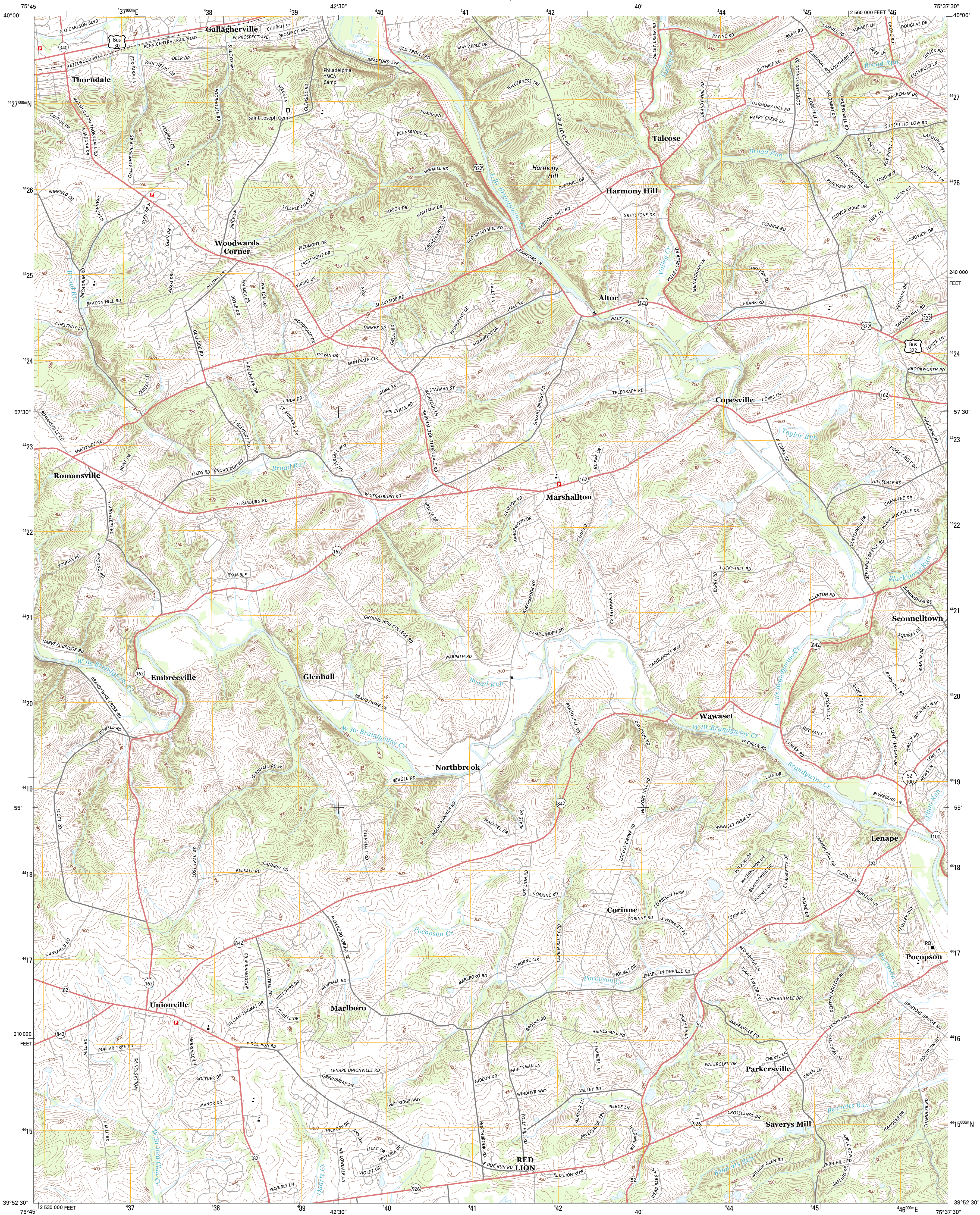




U.S. DEPARTMENT OF THE INTERIOR
U. S. GEOLOGICAL SURVEY

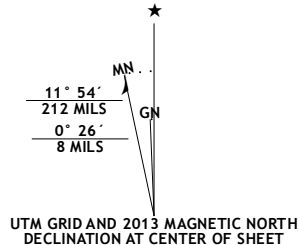


UNIONVILLE QUADRANGLE
PENNSYLVANIA-CHESTER CO.
7.5-MINUTE SERIES

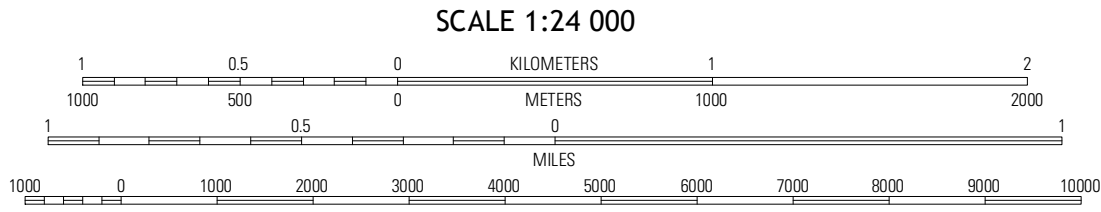


Produced by the United States Geological Survey
North American Datum of 1983 (NAD83)
World Geodetic System of 1984 (WGS84). Projection and
1000-meter grid: Universal Transverse Mercator, Zone 18S
10 000-foot ticks: Pennsylvania Coordinate System of 1983
(south zone)

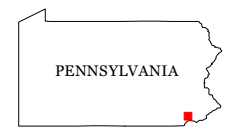
Imagery.....NAIP, July 2010
Roads.....©2006-2012 TomTom
Names.....GNS, 2013
Hydrography.....National Hydrography Dataset, 2010
Contours.....National Elevation Dataset, 2011
Boundaries.....Census, IBWC, IBC, USGS, 1972 - 2012



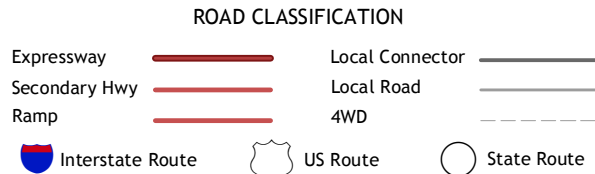
U.S. National Grid
100,000 m Square ID
VK
Grid Zone Designation
18S



This map was produced to conform with the
National Geospatial Program US Topo Product Standard, 2011.
A metadata file associated with this product is draft version 0.6.11



QUADRANGLE LOCATION		
Wagontown	Downton	Malvern
Cokesville	Unionville	West Chester
West Grove	Kennett Square	Wilmington North



UNIONVILLE, PA
2013