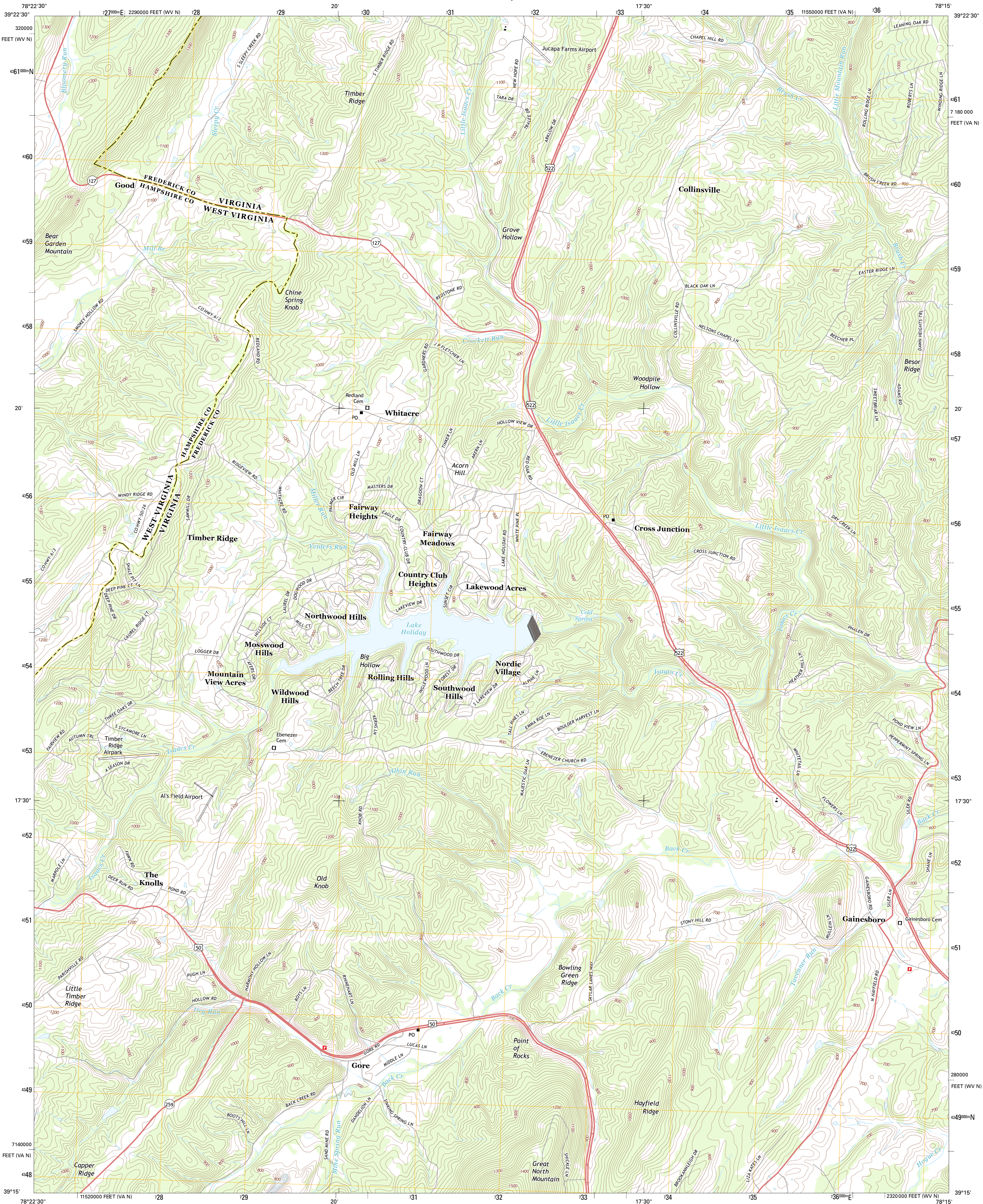




U.S. DEPARTMENT OF THE INTERIOR
U. S. GEOLOGICAL SURVEY

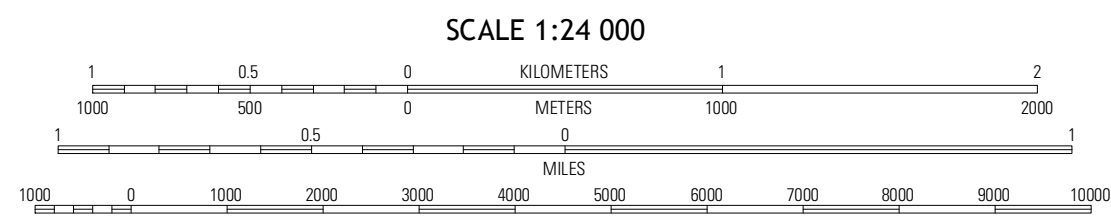
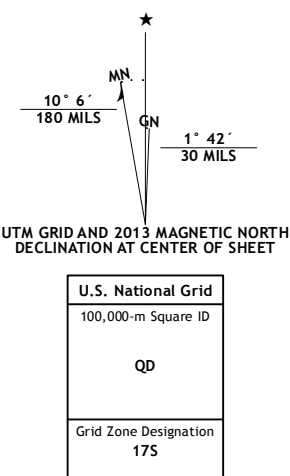


GORE QUADRANGLE
VIRGINIA-WEST VIRGINIA
7.5-MINUTE SERIES



Produced by the United States Geological Survey
North American Datum of 1983 (NAD83)
World Geodetic System of 1984 (WGS84), Projection and
1 000-meter grid; Universal Transverse Mercator, Zone 17S
10 000-foot ticks; Virginia Coordinate System of 1983 (north zone)
West Virginia Coordinate System of 1983 (north zone)

Imagery.....NAIP, June 2012 - August 2012
Roads.....©2006-2012 TomTom
Names.....©2013
Hydrography.....National Hydrography Dataset, 2012
Contours.....National Elevation Dataset, 2005
Boundaries.....Census, IBWC, IBC, USGS, 1972 - 2012



CONTOUR INTERVAL 20 FEET
NORTH AMERICAN VERTICAL DATUM OF 1988
This map was produced to conform with the
National Geospatial Program US Topo Product Standard, 2011.
A metadata file associated with this product is draft version 0.6.11



Largest	Ridge	Glengary
Capon Bridge	Gore	White Hall
Capon Springs	Hayfield	Winchester

ADJOINING 7.5 QUADRANGLES

ROAD CLASSIFICATION		
Expressway	Local Connector	Local Road
Secondary Hwy	Local Road	4WD
Ramp	Interstate Route	US Route
		State Route

GORE, VA-WV
2013