

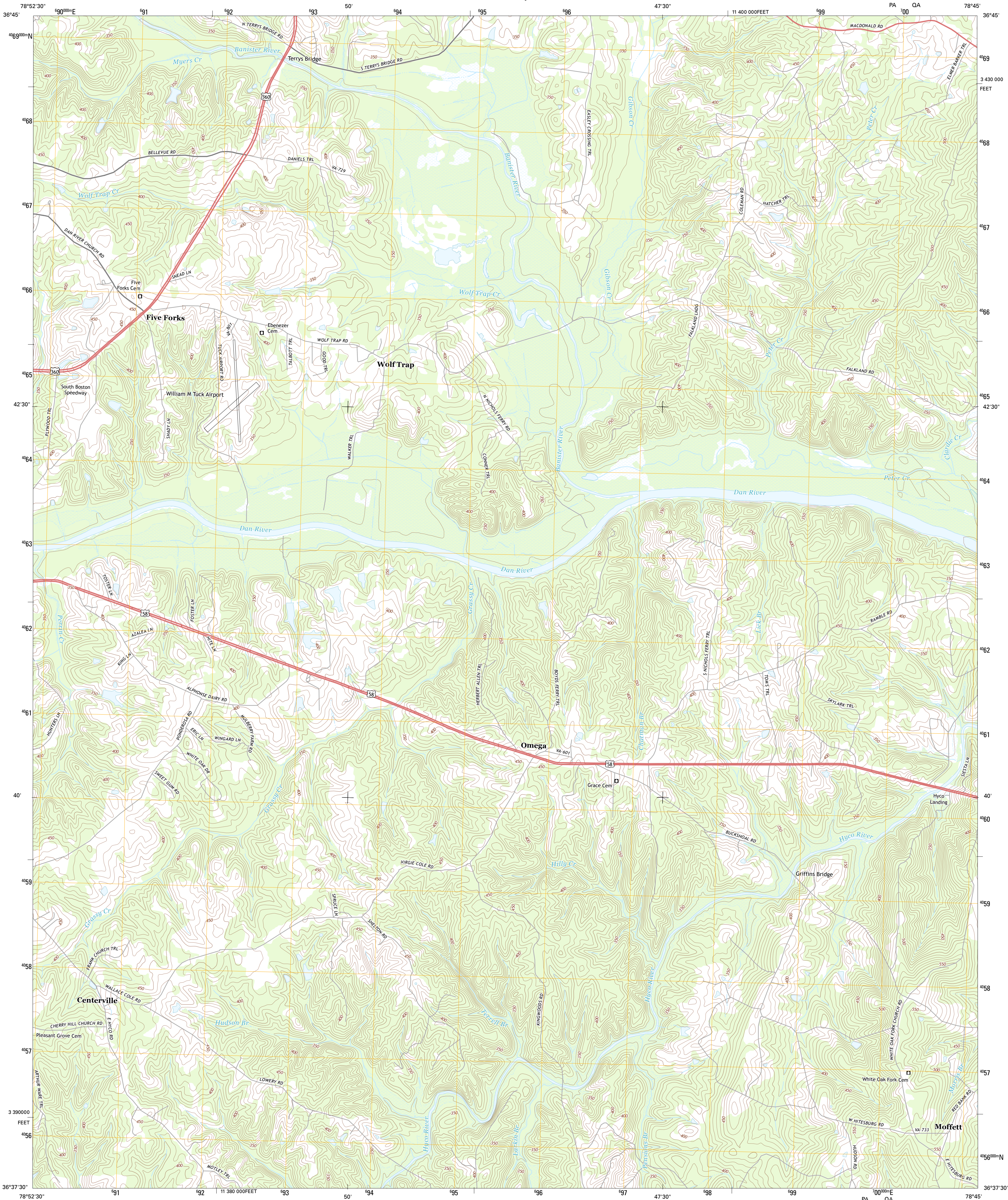


U.S. DEPARTMENT OF THE INTERIOR
U. S. GEOLOGICAL SURVEY



OMEGA QUADRANGLE
VIRGINIA-HALIFAX CO.
7.5-MINUTE SERIES

PA 700 QA



Produced by the United States Geological Survey
North American Datum of 1983 (NAD83)
World Geodetic System of 1984 (WGS84) Projection and
1 000-meter grid: Universal Transverse Mercator, Zone 17S
10 000-foot ticks: Virginia Coordinate System of 1983 (south zone)

Imagery.....NAIP, May 2012
Roads.....©2006-2012 TomTom
Names.....©2013
Hydrography.....National Hydrography Dataset, 2012
Contours.....National Elevation Dataset, 2008
Boundaries.....Census, IBWC, IBC, USGS, 1972-2012

UTM GRID AND 2013 MAGNETIC NORTH
DECLINATION AT CENTER OF SHEET

U.S. National Grid
100,000-m Square ID
700
PA QA
Grid Zone Designation
17S

SCALE 1:24 000
1 000 0 0.5 1 KILOMETERS
1000 0 500 1000 METERS
1 0 1000 2000 3000 4000 5000 6000 7000 8000 9000 10000 FEET

CONTOUR INTERVAL 10 FEET
NORTH AMERICAN VERTICAL DATUM OF 1988

This map was produced to conform with the
National Geospatial Program US Topo Product Standard, 2011.
A metadata file associated with this product is draft version 0.6.11



QUADRANGLE LOCATION		
Halifax	Scottsburg	Clover
South Boston	Omega	Buffalo Springs
Cluster Springs	Viniglia	Nelson

ADJOINING 7.5 QUADRANGLES

ROAD CLASSIFICATION
Expressway
Secondary Hwy
Ramp
Local Connector
Local Road
4WD
Interstate Route
US Route
State Route

OMEGA, VA
2013