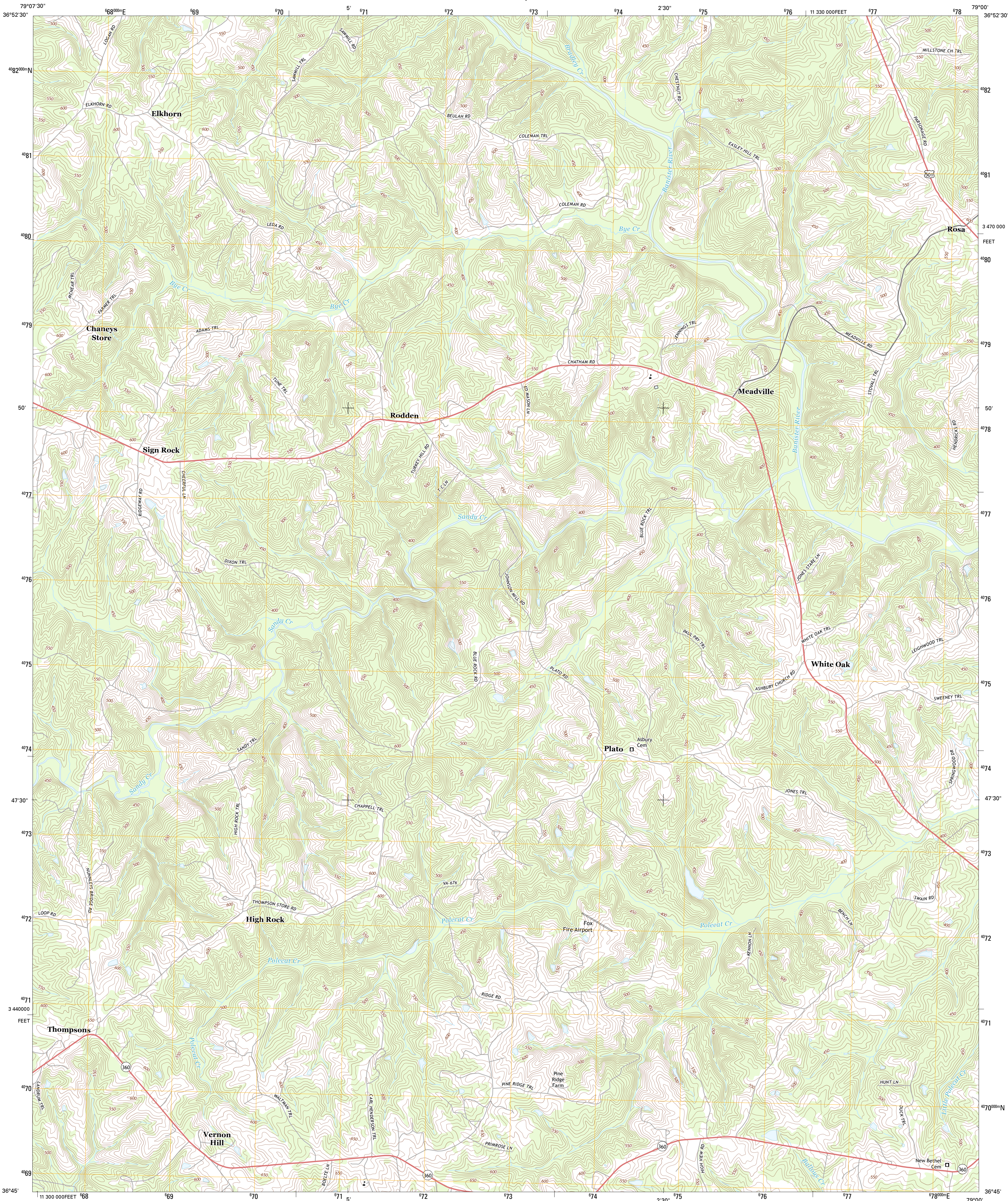




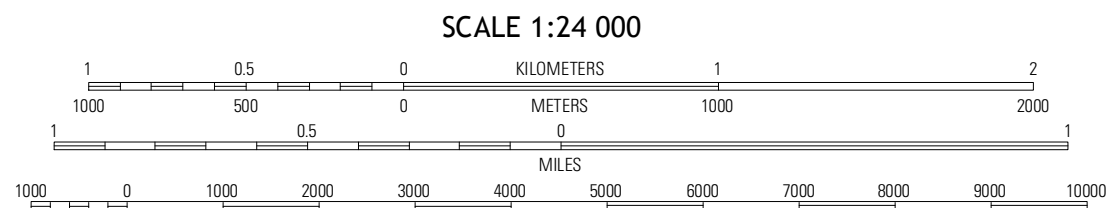
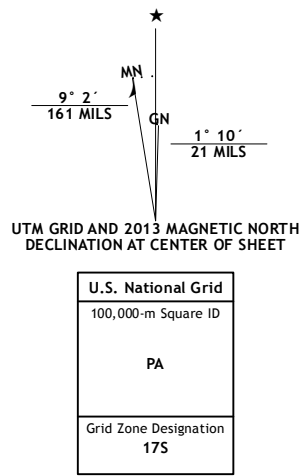
U.S. DEPARTMENT OF THE INTERIOR
U. S. GEOLOGICAL SURVEY



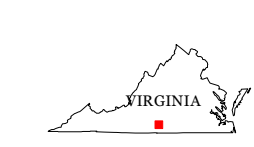
VERNON HILL QUADRANGLE
VIRGINIA-HALIFAX CO.
7.5-MINUTE SERIES



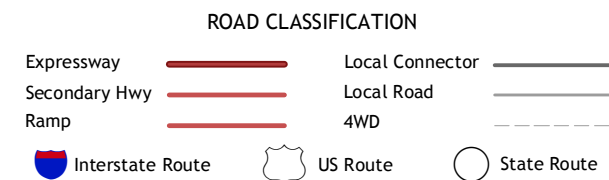
Produced by the United States Geological Survey
North American Datum of 1983 (NAD83)
Roads.....©2006-2012 TomTom
Names.....©2012 GNIS
Hydrography.....National Hydrography Dataset, 2012
Contours.....National Elevation Dataset, 2008
Boundaries.....Census, BWC, IBC, USGS, 1972-2012



CONTOUR INTERVAL 10 FEET
NORTH AMERICAN VERTICAL DATUM OF 1988
This map was produced to conform with the
National Geospatial Program US Topo Product Standard, 2011.
A metadata file associated with this product is draft version 0.6.11



Mount Airy	Republican Grove	Nathalie
Java	Vernon Hill	Halifax
Ingram	Oak Level	South Boston



VERNON HILL, VA
2013

ADJOINING 7.5 QUADRANGLES