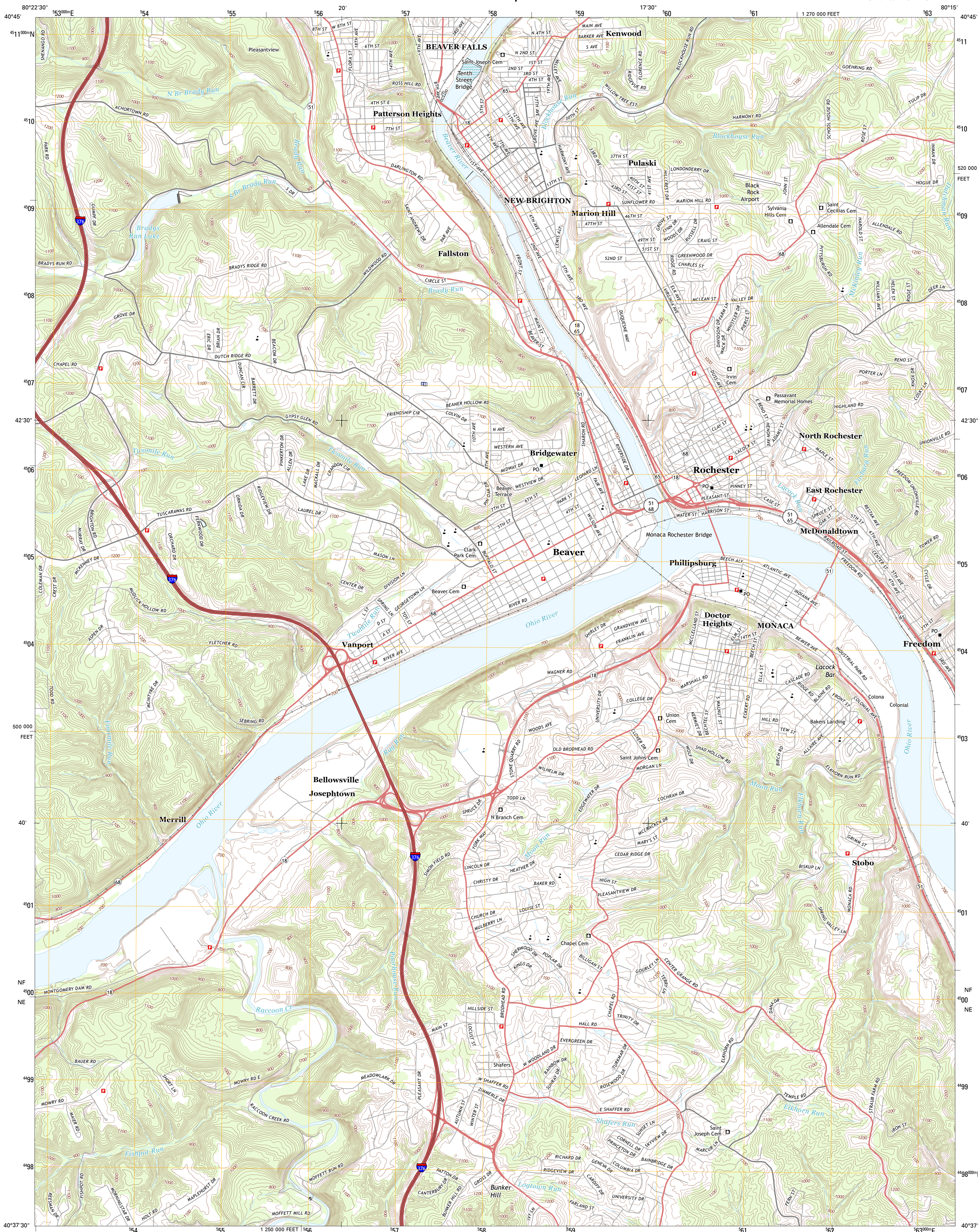




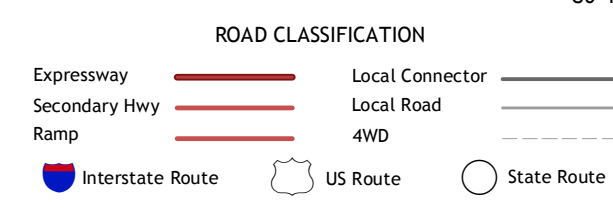
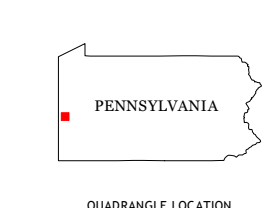
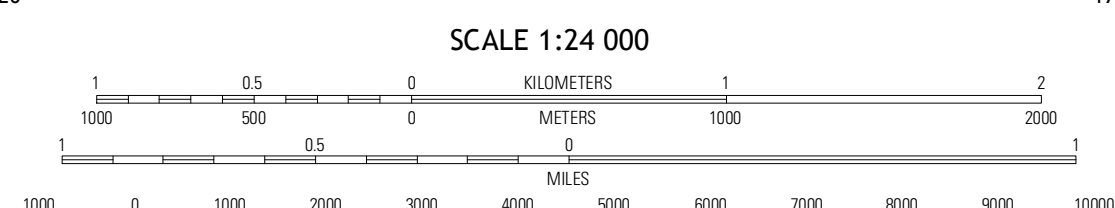
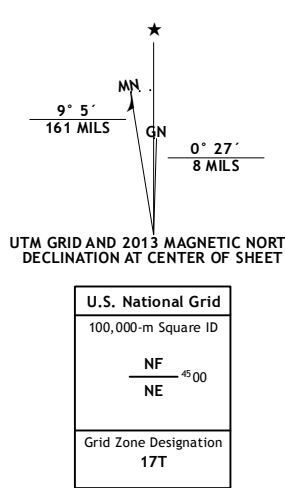
U.S. DEPARTMENT OF THE INTERIOR
U. S. GEOLOGICAL SURVEY



BEAVER QUADRANGLE
PENNSYLVANIA-BEAVER CO.
7.5-MINUTE SERIES



Produced by the United States Geological Survey
North American Datum of 1983 (NAD83)
World Geodetic System of 1984 (WGS84)
1 000-meter grid: Universal Transverse Mercator, Zone 17T
10 000-foot ticks: Pennsylvania Coordinate System of 1983 (south zone)



QUADRANGLE LOCATION

New Galilee	Beaver Falls	Zelenople
Midland	Beaver	Baden
Hookstown	Aliquippa	Ambridge

ADJOINING 7.5 QUADRANGLES

BEAVER, PA
2013