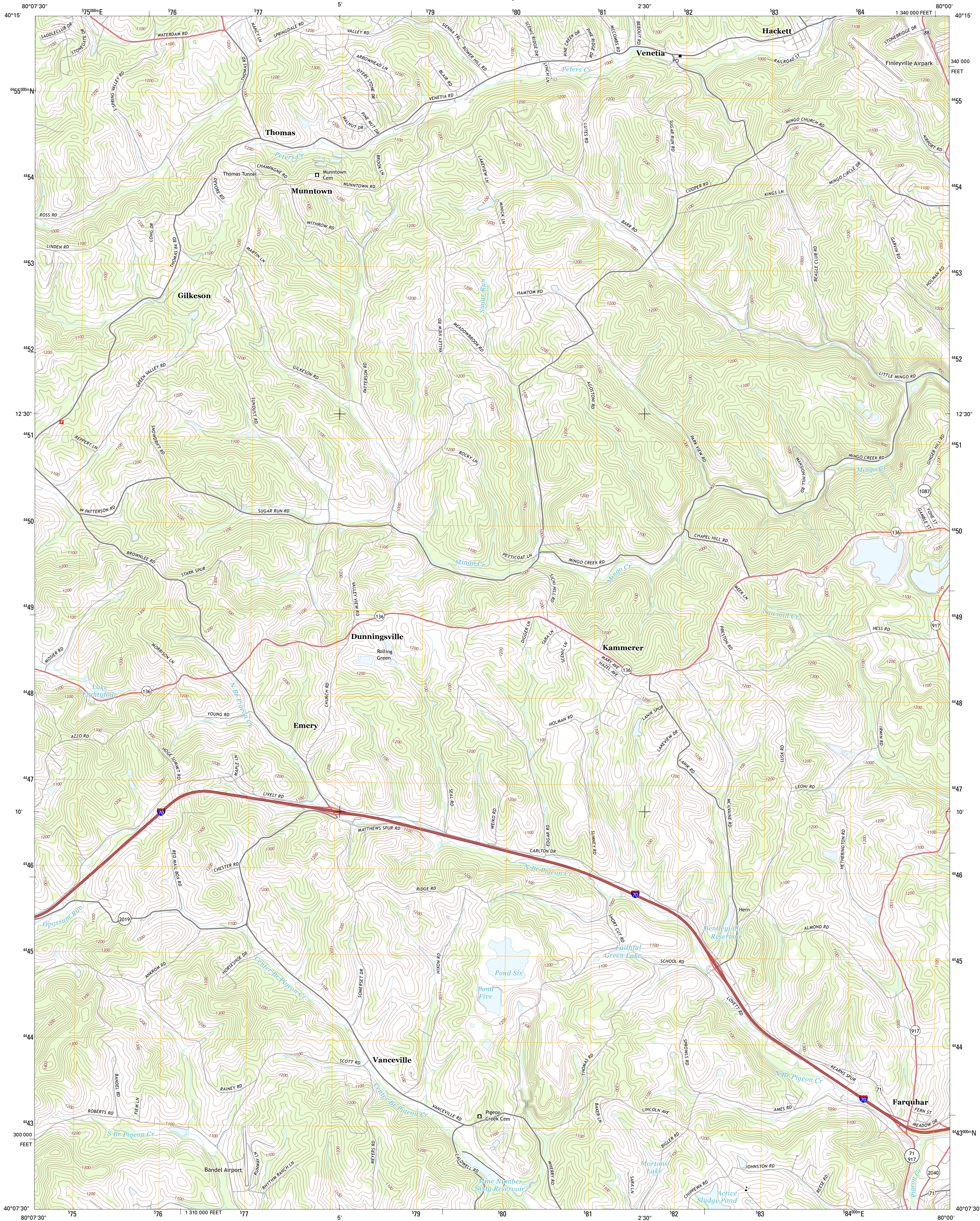




U.S. DEPARTMENT OF THE INTERIOR  
U. S. GEOLOGICAL SURVEY



HACKETT QUADRANGLE  
PENNSYLVANIA-WASHINGTON CO.  
7.5-MINUTE SERIES



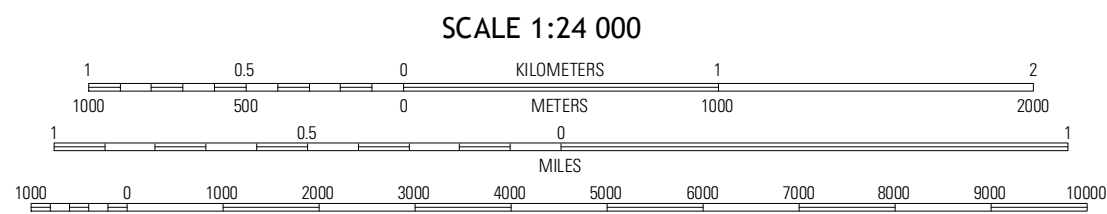
Produced by the United States Geological Survey  
North American Datum of 1983 (NAD83)  
World Geodetic System of 1984 (WGS84). Projection and  
1 000-meter grid: Universal Transverse Mercator, Zone 17T  
10 000-foot ticks: Pennsylvania Coordinate System of 1983  
(south zone)

Imagery.....NAIP, June 2010  
Roads.....©2006-2012, TomTom  
Names.....GNS, 2013  
Hydrography.....National Hydrography Dataset, 2010  
Contours.....National Elevation Dataset, 2010  
Boundaries.....Census, IBWC, IBC, USGS, 1972-2012

UTM GRID AND 2013 MAGNETIC NORTH  
DECLINATION AT CENTER OF SHEET

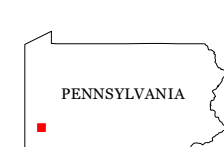
9° 8' 16.2 MILLS  
0° 36' 11 MILLS

U.S. National Grid  
100,000-m Square ID  
NE  
Grid Zone Designation  
17T



CONTOUR INTERVAL 20 FEET  
NORTH AMERICAN VERTICAL DATUM OF 1988

This map was produced to conform with the  
National Geospatial Program US Topo Product Standard, 2011.  
A metadata file associated with this product is draft version 0.6.11



QUADRANGLE LOCATION		
Canonsburg	Bridgetville	Glassport
Washington East	Hackett	Monongahela
Amity	Ellsworth	California

ROAD CLASSIFICATION

Expressway  
Secondary Hwy  
Ramp  
Local Connector  
Local Road  
4WD  
Interstate Route  
US Route  
State Route

HACKETT, PA  
2013

ADJOINING 7.5 QUADRANGLES