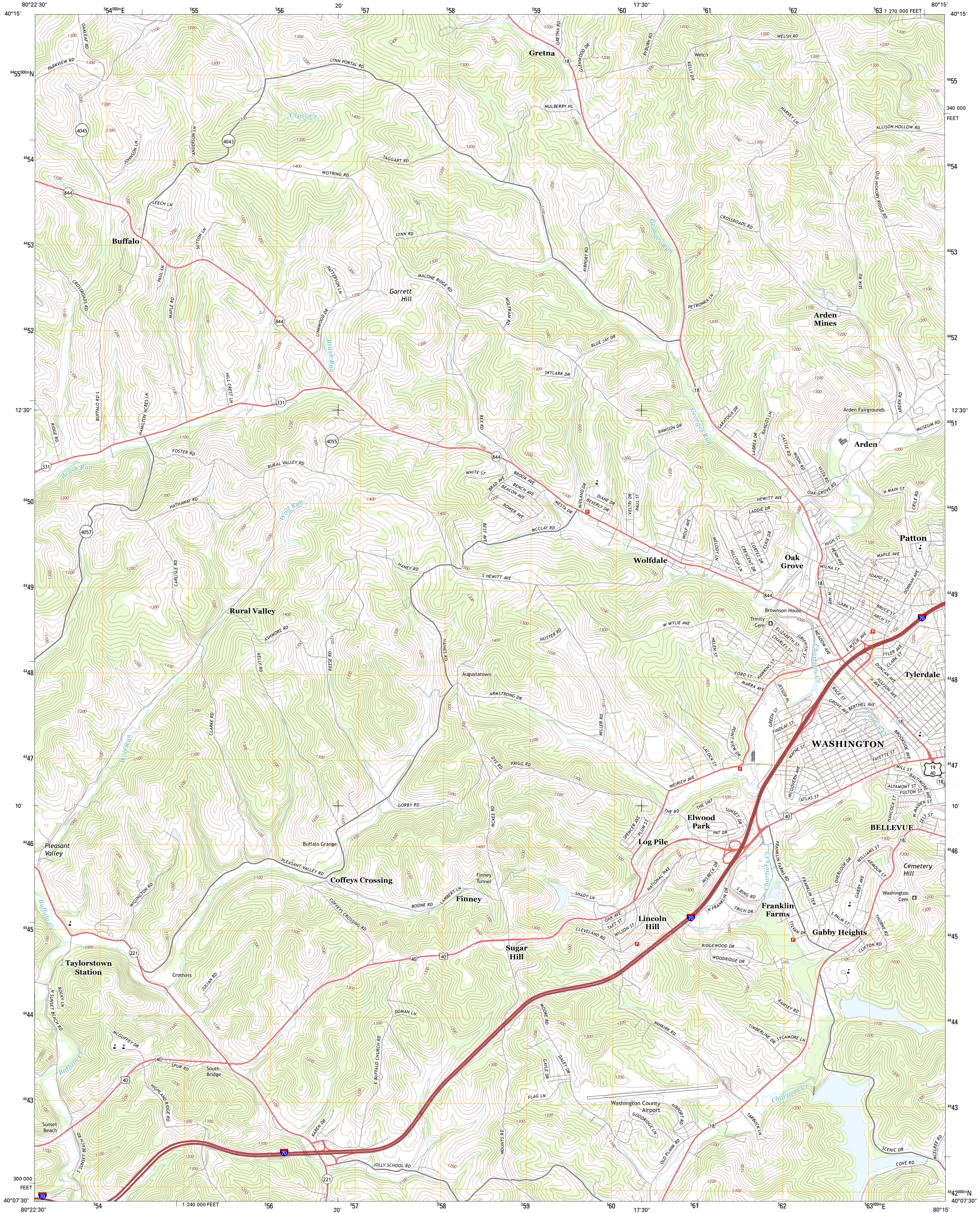




U.S. DEPARTMENT OF THE INTERIOR  
U. S. GEOLOGICAL SURVEY

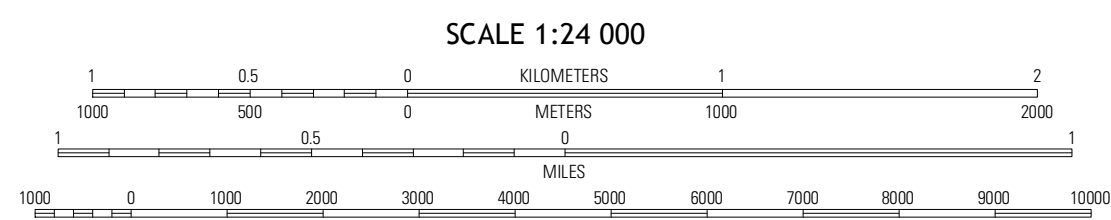
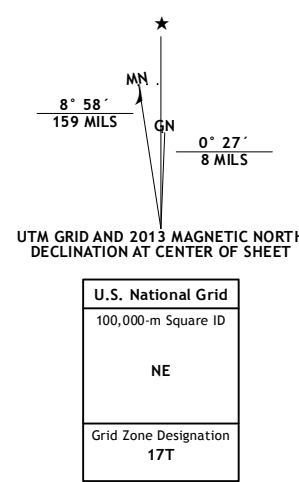


WASHINGTON WEST QUADRANGLE  
PENNSYLVANIA-WASHINGTON CO.  
7.5-MINUTE SERIES

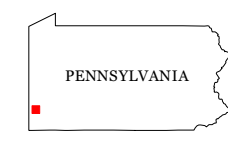


Produced by the United States Geological Survey  
North American Datum of 1983 (NAD83)  
World Geodetic System of 1984 (WGS84). Projection and  
1 000-meter grid: Universal Transverse Mercator. Zone 17T  
10 000-foot ticks: Pennsylvania Coordinate System of 1983  
(south zone)

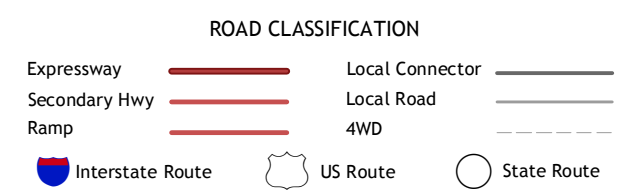
Imagery.....NAIP, June 2010  
Roads.....©2006-2012, TomTom  
Names.....GNS, 2013  
Hydrography.....National Hydrography Dataset, 2010  
Contours.....National Elevation Dataset, 2010  
Boundaries.....Census, IBWC, IBC, USGS, 1972-2012



This map was produced to conform with the  
National Geospatial Program US Topo Product Standard, 2011.  
A metadata file associated with this product is draft version 0.6.11



QUADRANGLE LOCATION		
Avella	Midway	Canonsburg
West Middletown	Washington West	Washington East
Clayville	Prosperity	Amity



WASHINGTON WEST, PA  
2013

ADJOINING 7.5 QUADRANGLES