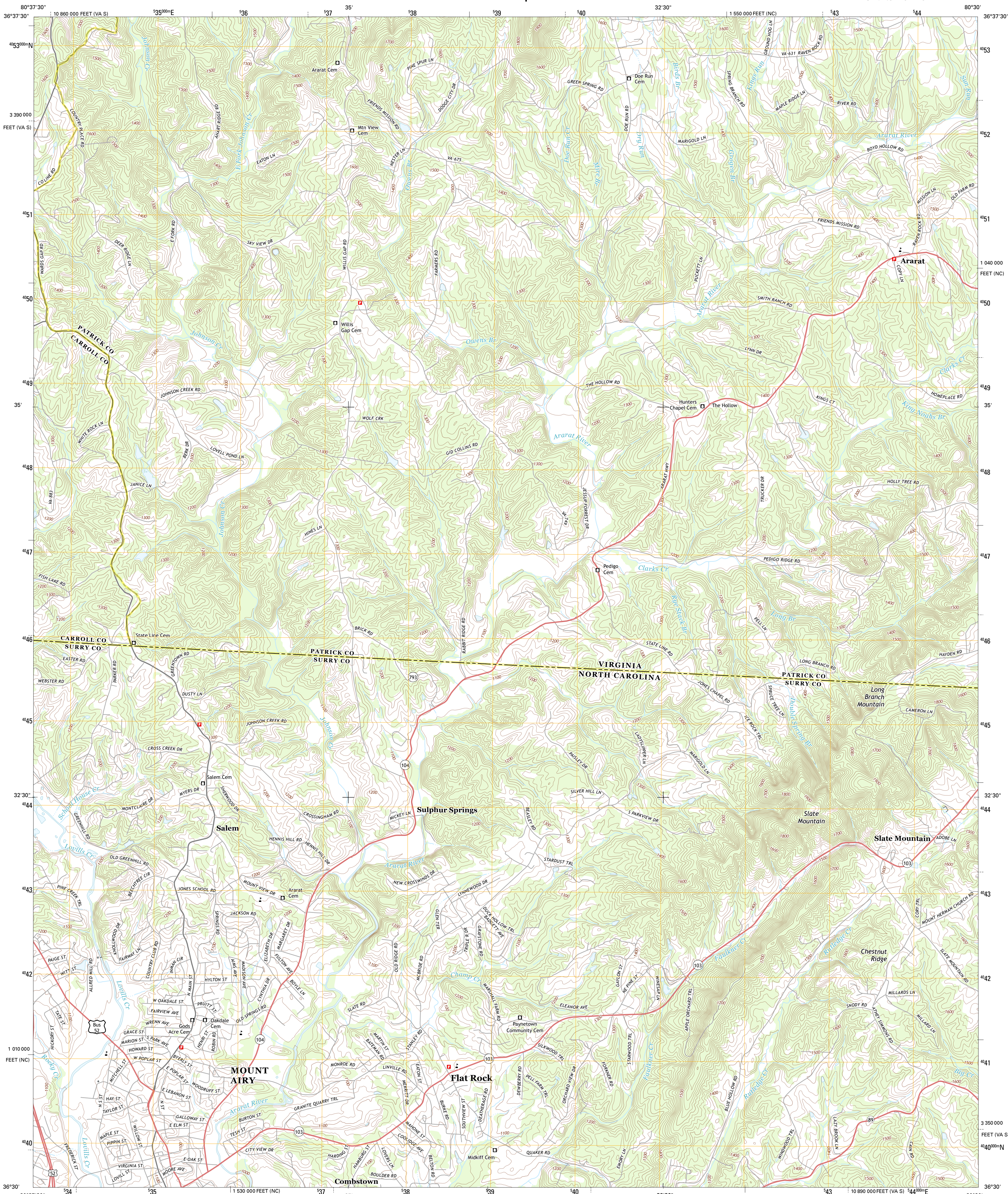




U.S. DEPARTMENT OF THE INTERIOR
U. S. GEOLOGICAL SURVEY

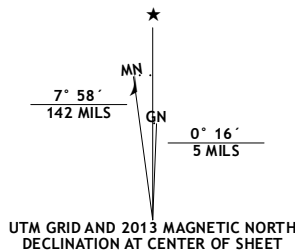


MOUNT AIRY NORTH QUADRANGLE
NORTH CAROLINA-VIRGINIA
7.5-MINUTE SERIES

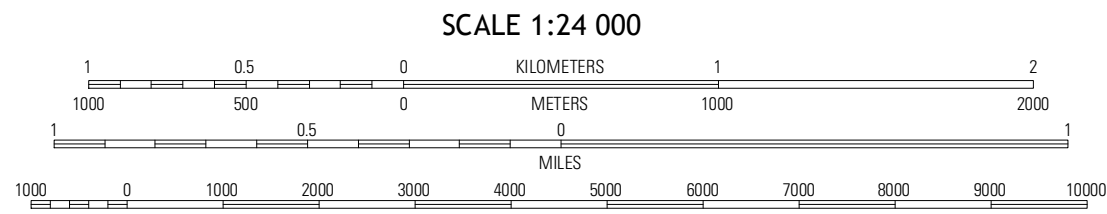


Produced by the United States Geological Survey
North American Datum of 1983 (NAD83)
World Geodetic System of 1984 (WGS84) Projection and
1 000-meter grid: Universal Transverse Mercator, Zone 17S
10 000-foot ticks: Virginia Coordinate System of 1983 (south
zone), North Carolina Coordinate System of 1983

Imagery.....NAIP, June 2012 - September 2012
Roads.....©2006-2012 TomTom
Names.....GNIS, 2013
Hydrography.....National Hydrography Dataset, 2012
Contours.....National Elevation Dataset, 1999
Boundaries.....Census, IBWC, IBC, USGS, 1972 - 2012



U.S. National Grid
100,000-m Square ID
NA
Grid Zone Designation
17S



CONTOUR INTERVAL 20 FEET
NORTH AMERICAN VERTICAL DATUM OF 1988
This map was produced to conform with the
National Geospatial Program US Topo Product Standard, 2011.
A metadata file associated with this product is draft version 0.6.11



Fancy Gap	Laurel Fork	Meadows of Dan
Cana	Mount Airy North	Claudville
Dobson	Mount Airy South	Pilot Mountain

ADJOINING 7.5' QUADRANGLES

ROAD CLASSIFICATION
Expressway
Secondary Hwy
Ramp
Local Connector
Local Road
4WD
Interstate Route
US Route
State Route

MOUNT AIRY NORTH, NC-VA
2013