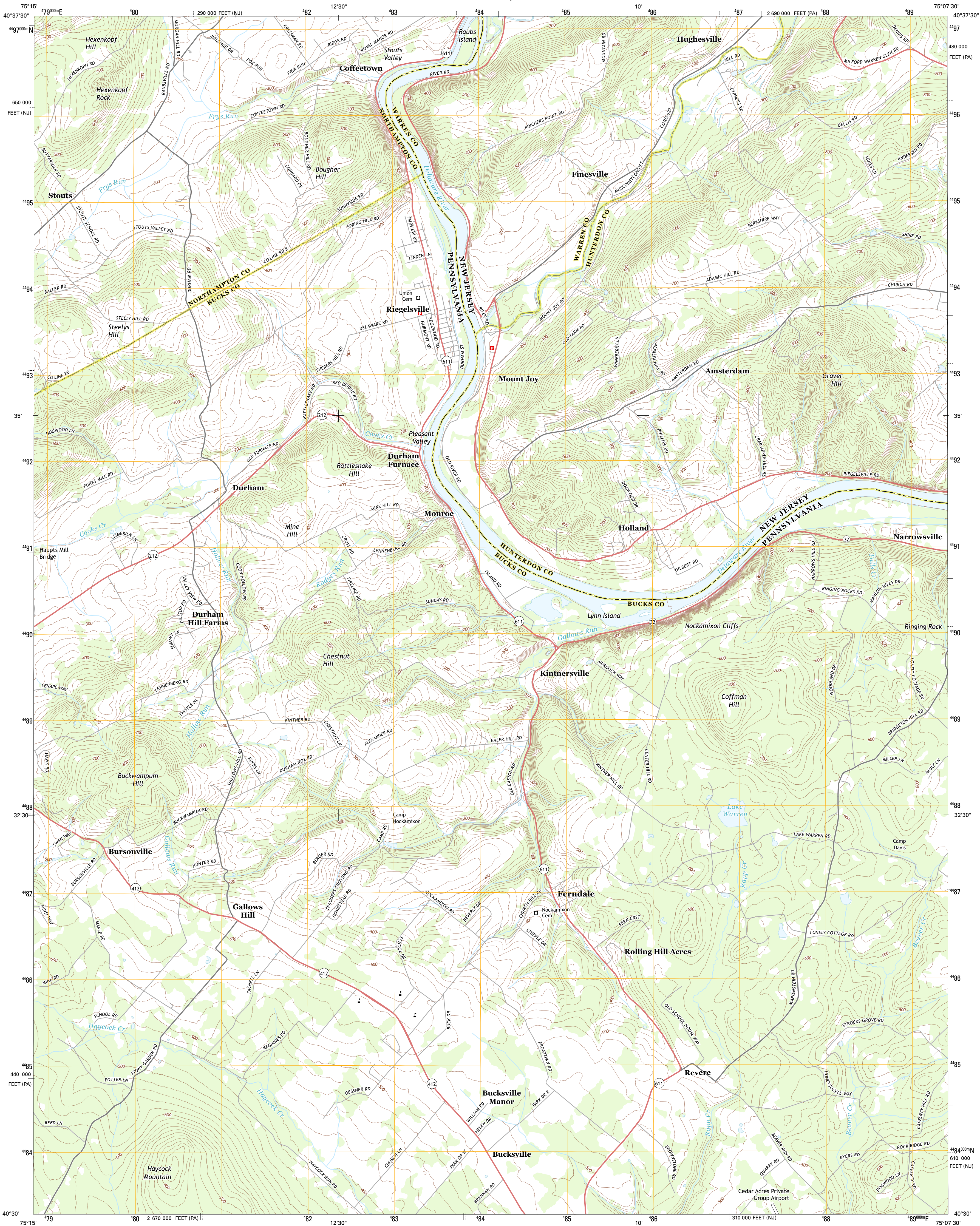




U.S. DEPARTMENT OF THE INTERIOR
U. S. GEOLOGICAL SURVEY

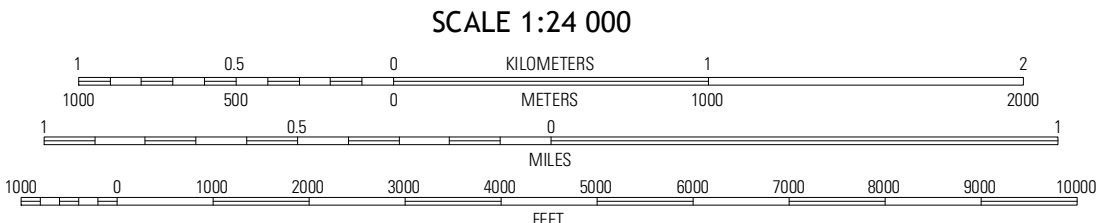
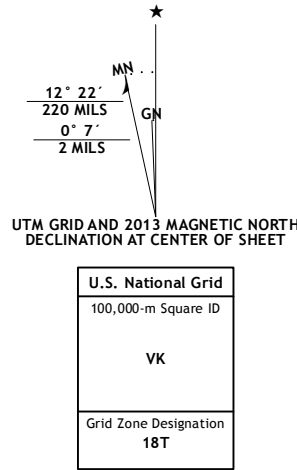


RIEGELSVILLE QUADRANGLE
PENNSYLVANIA-NEW JERSEY
7.5-MINUTE SERIES

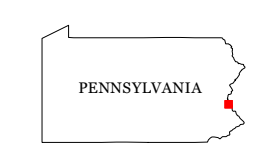


Produced by the United States Geological Survey
North American Datum of 1983 (NAD83)
World Geodetic System of 1984 (WGS84)
1 000-meter grid; Universal Transverse Mercator, Zone 18T
10 000-foot ticks; Pennsylvania Coordinate System of 1983
(south zone), New Jersey Coordinate System of 1983

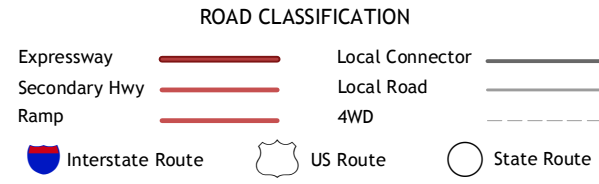
Imagery.....NAIP, July 2010
Roads.....©2006-2012 TomTom
Names.....©2006-2012 TomTom
Hydrography.....National Hydrography Dataset, 2010
Contours.....National Elevation Dataset, 2011
Boundaries.....Census, IBWC, USGS, 1972-2012



CONTOUR INTERVAL 20 FEET
NORTH AMERICAN VERTICAL DATUM OF 1988
This map was produced to conform with the
National Geospatial Program US Topo Product Standard, 2011.
A metadata file associated with this product is draft version 0.6.11



ADJOINING 7.5 QUADRANGLES		
Nazareth	Easton	Bloomsbury
Hellertown	Riegelsville	Frenchtown
Quakertown	Bedminster	Lumberville



RIEGELSVILLE, PA-NJ
2013