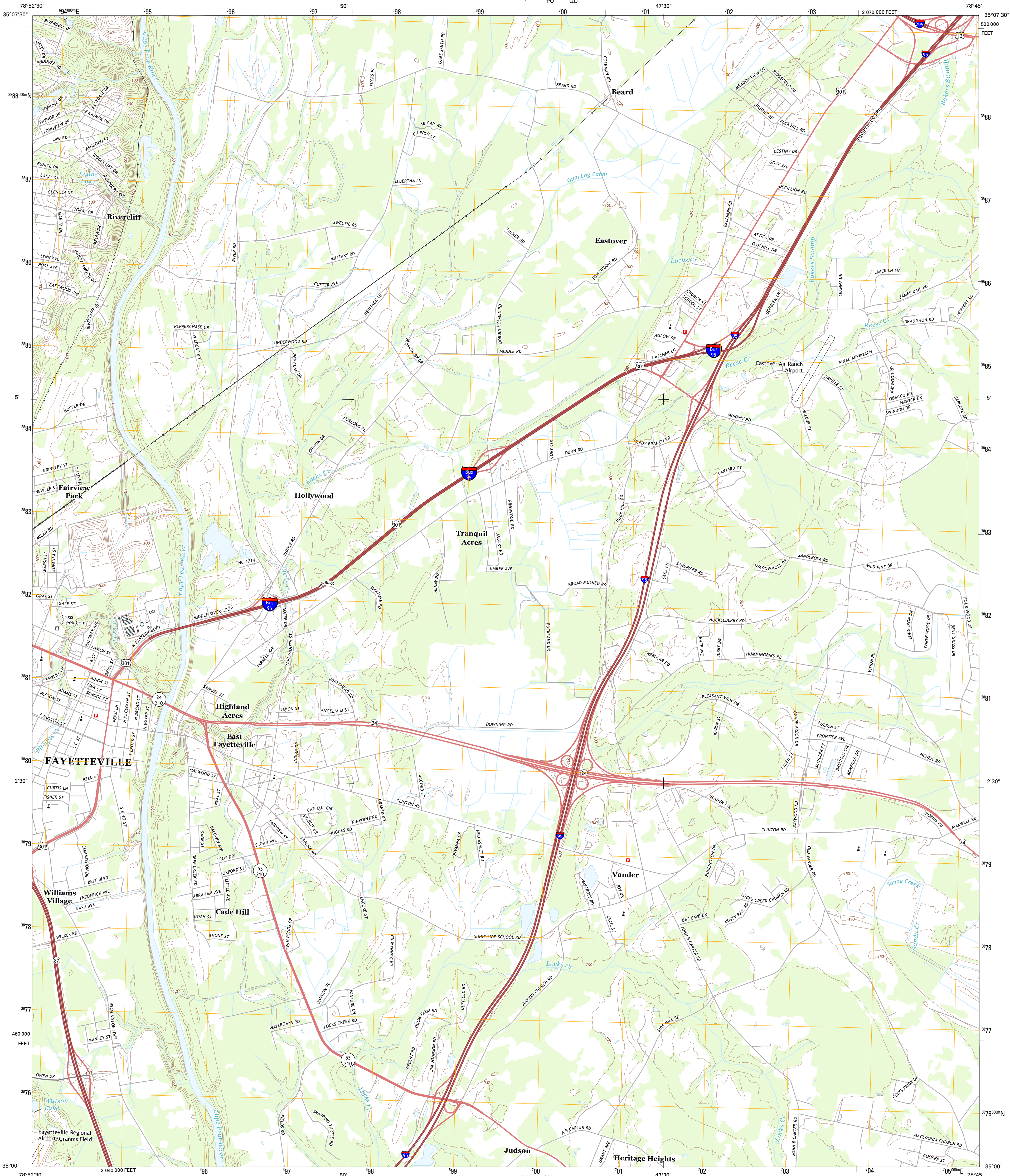




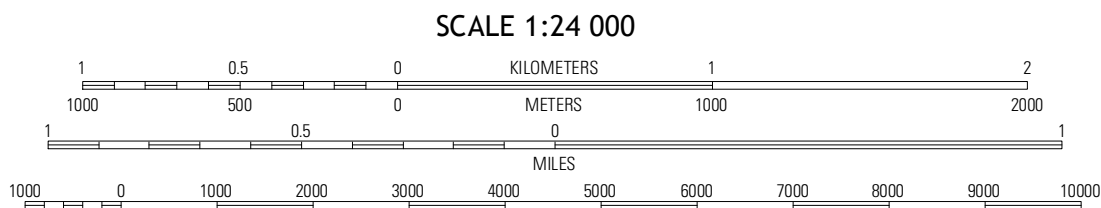
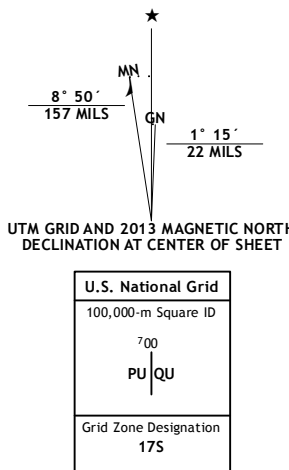
U.S. DEPARTMENT OF THE INTERIOR
U. S. GEOLOGICAL SURVEY



VANDER QUADRANGLE
NORTH CAROLINA-CUMBERLAND CO.
7.5-MINUTE SERIES



Produced by the United States Geological Survey
North American Datum of 1983 (NAD83)
World Geodetic System of 1984 (WGS84) Projection and
1 000-meter grid: Universal Transverse Mercator, Zone 17S
10 000-foot ticks: North Carolina Coordinate System of 1983



ROAD CLASSIFICATION	
Expressway	Local Connector
Secondary Hwy	Local Road
Ramp	4WD
Interstate Route	US Route
	State Route

QUADRANGLE LOCATION		
Manchester	Slocumb	Wade
Fayetteville	Vander	Stedman
Hope Mills	Cedar Creek	Autryville

ADJOINING 7.5 QUADRANGLES

VANDER, NC
2013