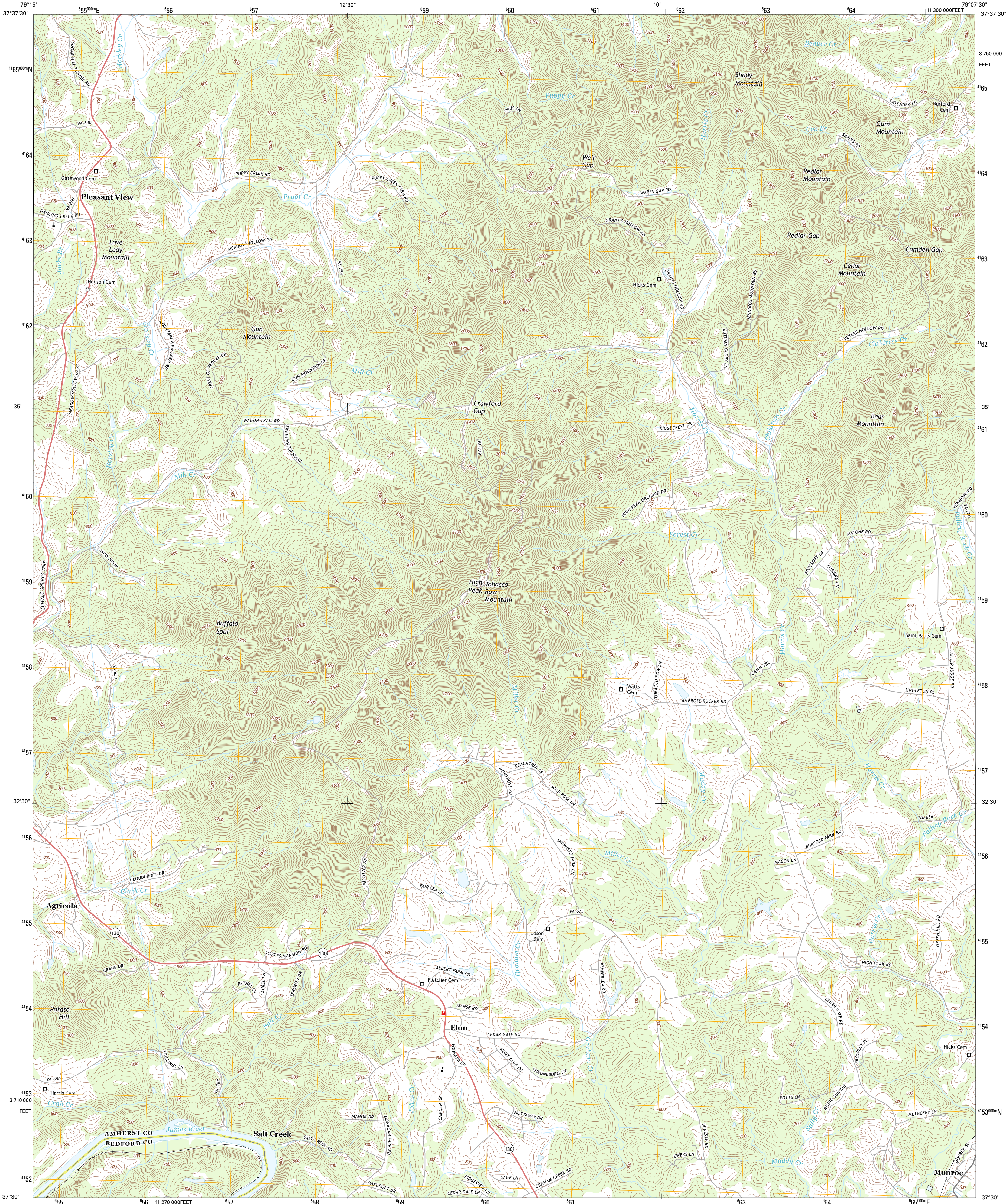




U.S. DEPARTMENT OF THE INTERIOR  
U. S. GEOLOGICAL SURVEY

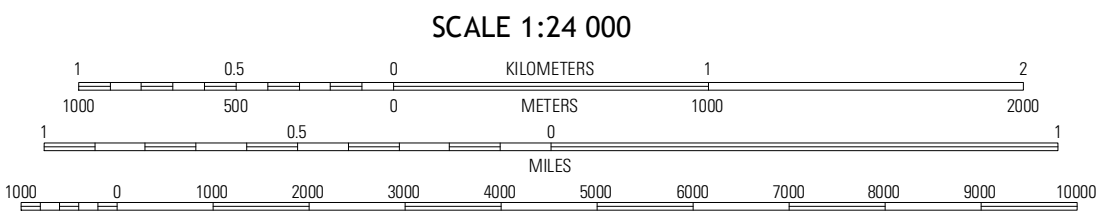
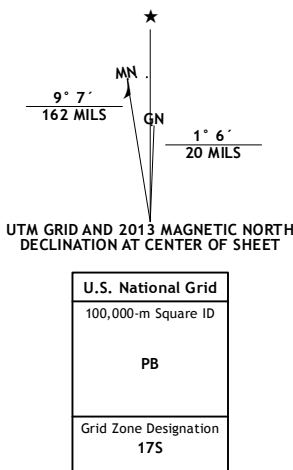


TOBACCO ROW MOUNTAIN QUADRANGLE  
VIRGINIA  
7.5-MINUTE SERIES



Produced by the United States Geological Survey  
North American Datum of 1983 (NAD83)  
World Geodetic System of 1984 (WGS84). Projection and  
1 000-meter grid: Universal Transverse Mercator, Zone 17S  
10 000-foot ticks: Virginia Coordinate System of 1983 (south  
zone)

Imagery.....NAIP, May 2012  
Roads.....©2006-2012 TomTom  
Names.....GNS, 2013  
Hydrography.....National Hydrography Dataset, 2012  
Contours.....National Elevation Dataset, 1999  
Boundaries.....Census, IBWC, USGS, 1972 - 2012



Buena Vista	Forks of Buffalo	Piney River
Big Island	Tobacco Row Mountain	Amherst
Boonsboro	Lynchburg	Kelly

TOBACCO ROW MOUNTAIN, VA  
2013

ADJOINING 7.5 QUADRANGLES