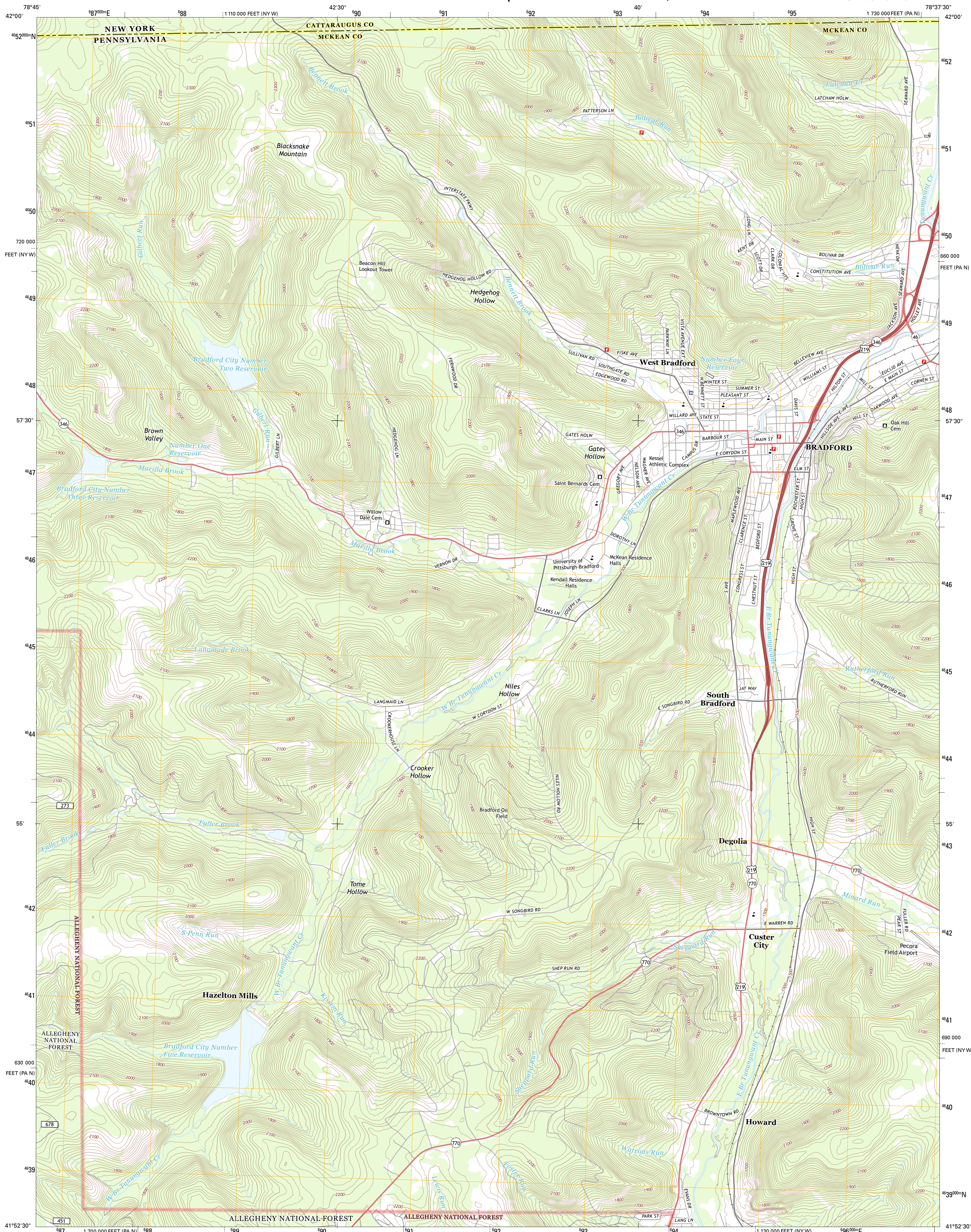




U.S. DEPARTMENT OF THE INTERIOR
U. S. GEOLOGICAL SURVEY

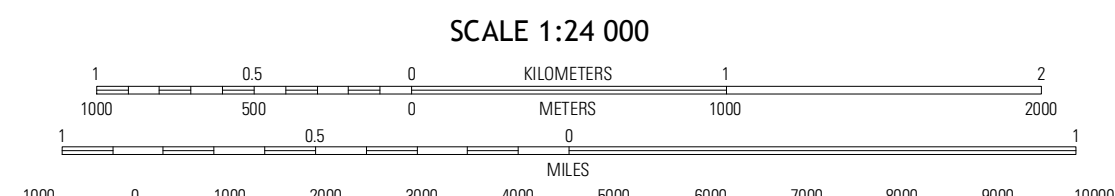
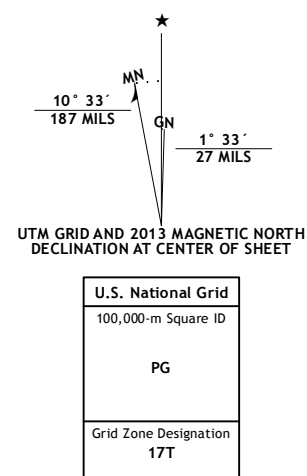


BRADFORD QUADRANGLE
PENNSYLVANIA-NEW YORK
7.5-MINUTE SERIES

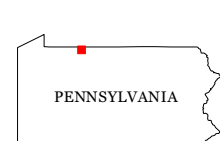


Produced by the United States Geological Survey
North American Datum of 1983 (NAD83)
World Geodetic System of 1984 (WGS84). Projection and
1 000-meter grid: Universal Transverse Mercator, Zone 17T
10 000-foot ticks: Pennsylvania Coordinate System of 1983
(north zone), New York Coordinate System of 1983 (west zone)

Imagery.....NAIP, May 2010
Roads.....©2006-2012, TomTom
Roads within US Forest Service Lands.....FS Topo Data
with limited Forest Service updates, 2013
Names.....GNIS, 2013
Hydrography.....National Hydrography Dataset, 2010
Contours.....National Elevation Dataset, 2010
Boundaries.....Census, IBWC, IBC, USGS, 1972 - 2012



CONTOUR INTERVAL 20 FEET
NORTH AMERICAN VERTICAL DATUM OF 1988
This map was produced to conform with the
National Geospatial Program US Topo Product Standard, 2011.
A metadata file associated with this product is draft version 0.6.11



Red House	Limestone	Knapp Creek
Stickney	Bradford	Derrick City
Westline	Lewis Run	Cyclone

ROAD CLASSIFICATION
Expressway
Secondary Hwy
Interstate Route
US Route
FS Primary Route
Local Connector
Local Road
AWD
US Route
FS Passenger Route
State Route
Clearance Route

Check with local Forest Service unit
for current travel conditions and restrictions.

BRADFORD, PA-NY
2013

ADJOINING 7.5 QUADRANGLES