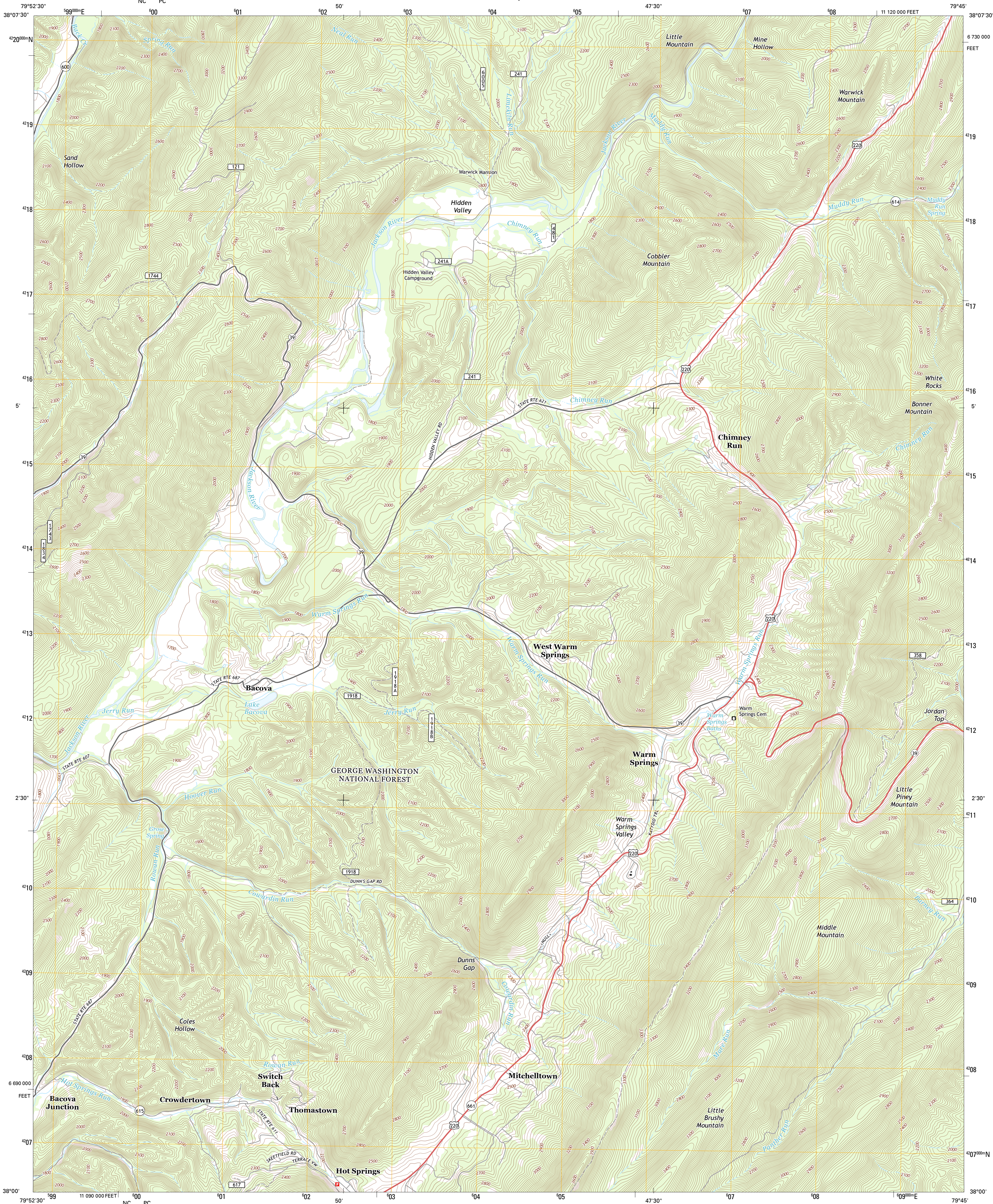




U.S. DEPARTMENT OF THE INTERIOR
U. S. GEOLOGICAL SURVEY

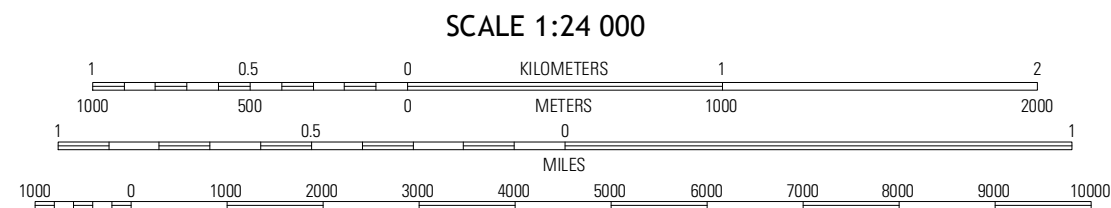
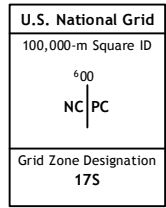
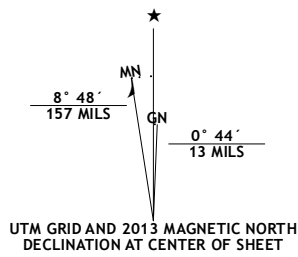


WARM SPRINGS QUADRANGLE
VIRGINIA-BATH CO.
7.5-MINUTE SERIES



Produced by the United States Geological Survey
North American Datum of 1983 (NAD83)
World Geodetic System of 1984 (WGS84). Projection and
1 000-meter grid: Universal Transverse Mercator, Zone 17S
10 000-foot ticks: Virginia Coordinate System of 1983 (north
zone)

Imagery.....NAIP, June 2012
Roads.....©2006-2012, TomTom
Roads within US Forest Service Lands
with limited Forest Service updates, 2013
Names.....©2013
Hydrography.....National Hydrography Dataset, 2012
Contours.....National Elevation Dataset, 2002
Boundaries.....Census, IBWC, IBC, USGS, 1972 - 2012



CONTOUR INTERVAL 20 FEET
NORTH AMERICAN VERTICAL DATUM OF 1988
This map was produced to conform with the
National Geospatial Program US Topo Product Standard, 2011.
A metadata file associated with this product is draft version 0.6.11



Minnehaha Springs	Sumrise	Burnsville
Mountain Grove	Warm Springs	Bath Alum
Falling Spring	Healing Springs	Nimrod Hall

ROAD CLASSIFICATION
Expressway
Secondary Hwy
Ramp
Interstate Route
FS Primary Route
Local Connector
Local Road
4WD
US Route
FS Passenger Route
State Route
FS High
Clearance Route
Check with local Forest Service unit
for current travel conditions and restrictions.

WARM SPRINGS, VA
2013