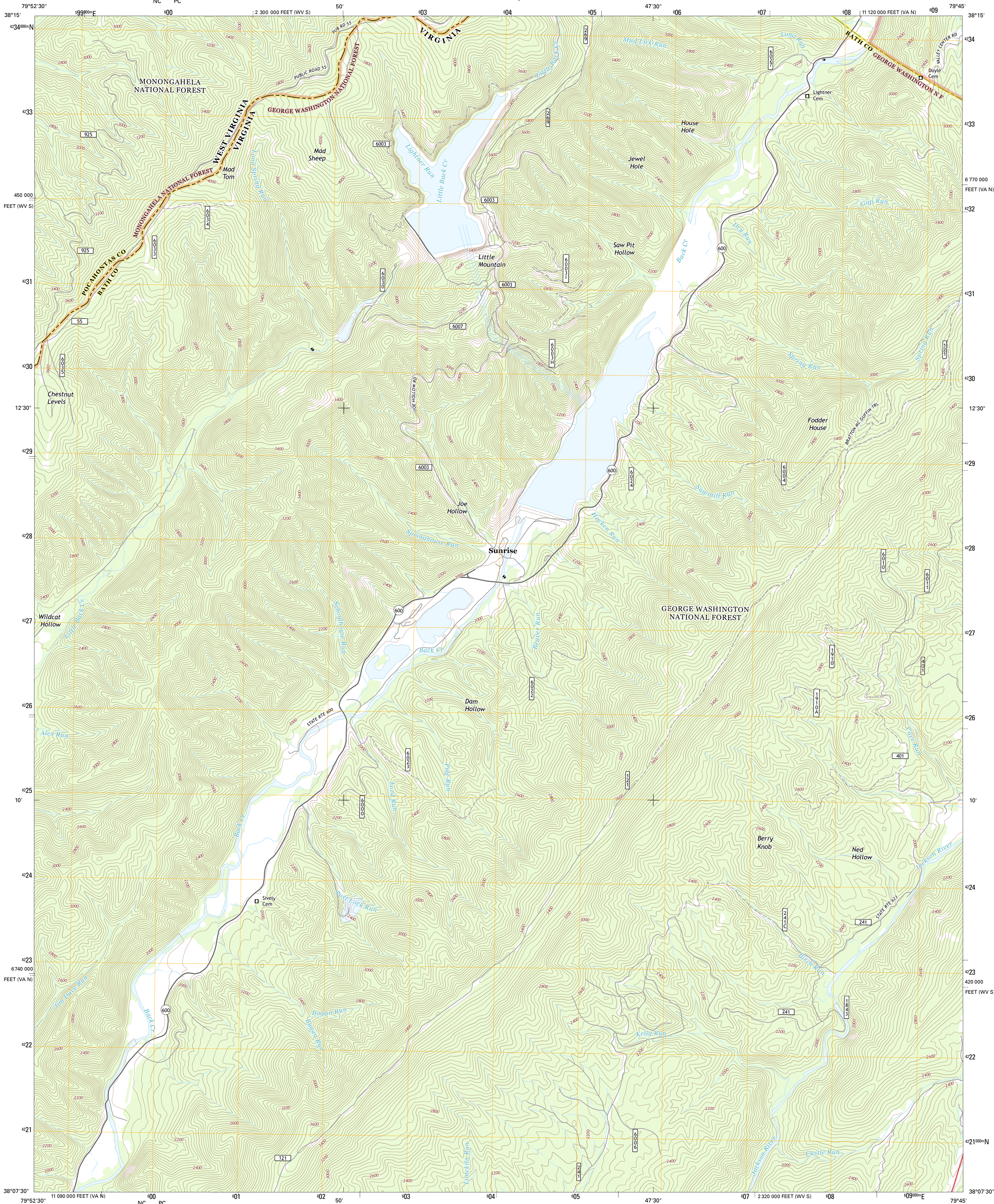




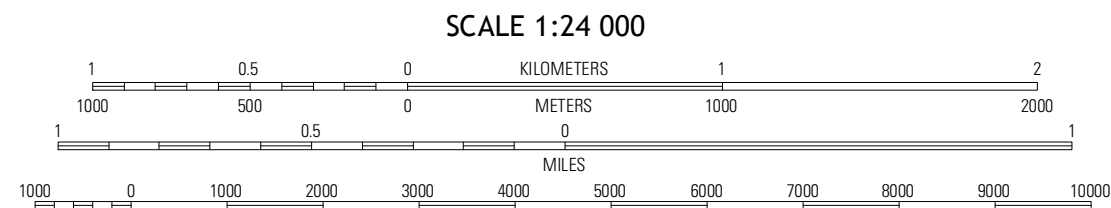
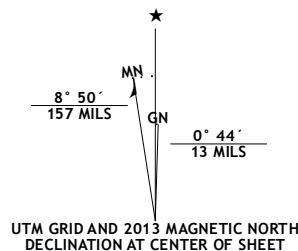
U.S. DEPARTMENT OF THE INTERIOR  
U. S. GEOLOGICAL SURVEY



SUNRISE QUADRANGLE  
VIRGINIA-WEST VIRGINIA  
7.5-MINUTE SERIES



Produced by the United States Geological Survey  
North American Datum of 1983 (NAD83)  
World Geodetic System of 1984 (WGS84) Projection and  
1 000-meter grid: Universal Transverse Mercator, Zone 17S  
10 000-foot ticks: Virginia Coordinate System of 1983 (north  
zone), West Virginia Coordinate System of 1983 (south zone)



Clover Lick	Paddy Knob	Muscoe
Minnehaha Springs	Sunrise	Burnsville
Mountain Grove	Warm Springs	Bath Alum

ROAD CLASSIFICATION  
Expressway  
Secondary Hwy  
Ramp  
Interstate Route  
FS Primary Route  
Local Connector  
Local Road  
4WD  
US Route  
FS Passenger Route  
State Route  
FS High Clearance Route

Check with local Forest Service unit  
for current travel conditions and restrictions.

SUNRISE, VA-WV  
2013