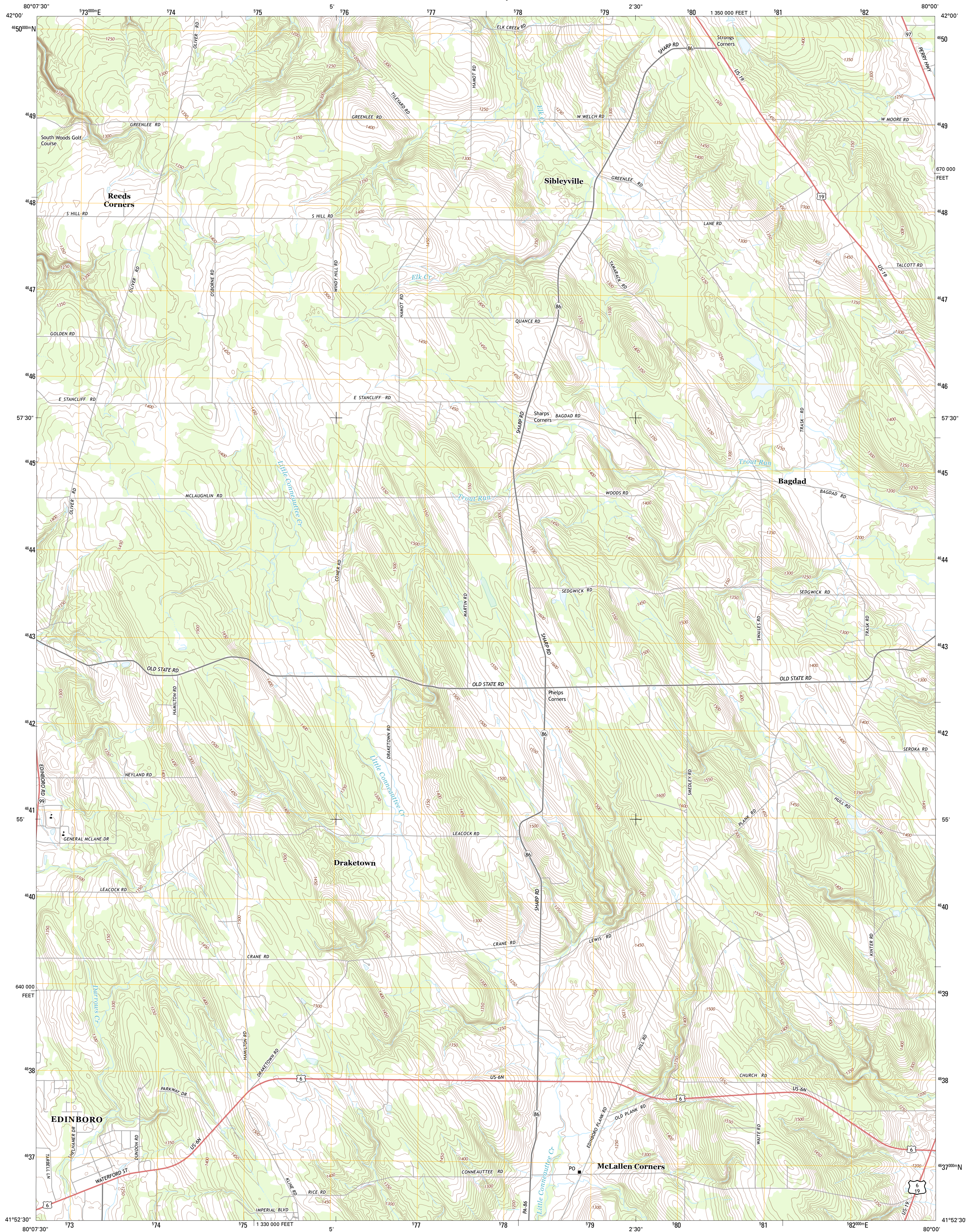




U.S. DEPARTMENT OF THE INTERIOR
U. S. GEOLOGICAL SURVEY



CAMBRIDGE SPRINGS NE QUADRANGLE
PENNSYLVANIA-ERIE CO.
7.5-MINUTE SERIES



Produced by the United States Geological Survey
North American Datum of 1983 (NAD83)
World Geodetic System of 1984 (WGS84), Projection and
1 000-meter grid; Universal Transverse Mercator, Zone 17T
10 000-foot ticks; Pennsylvania Coordinate System of 1983
(north zone)

UTM GRID AND 2013 MAGNETIC NORTH
DECLINATION AT CENTER OF SHEET

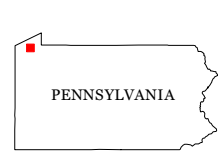
U.S. National Grid
100,000-m Square ID
NG
Grid Zone Designation
17T

SCALE 1:24 000

1 000 0 500 0 500 1 000 2 000
KILOMETERS
1 000 0 500 0 500 1 000 2 000
METERS
1 000 0 1000 2000 3000 4000 5000 6000 7000 8000 9000 10000
MILES
FEET

CONTOUR INTERVAL 10 FEET
NORTH AMERICAN VERTICAL DATUM OF 1988

This map was produced to conform with the
National Geospatial Program US Topo Product Standard, 2011.
A metadata file associated with this product is draft version 0.6.11



QUADRANGLE LOCATION

Swanville	Erie South	Hammett
Edinboro North	Cambridge Springs NE	Waterford
Edinboro South	Cambridge Springs	Millers Station

ADJOINING 7.5 QUADRANGLES

ROAD CLASSIFICATION

Expressway
Secondary Hwy
Ramp

Local Connector
Local Road
4WD

Interstate Route
US Route
State Route

CAMBRIDGE SPRINGS NE, PA
2013