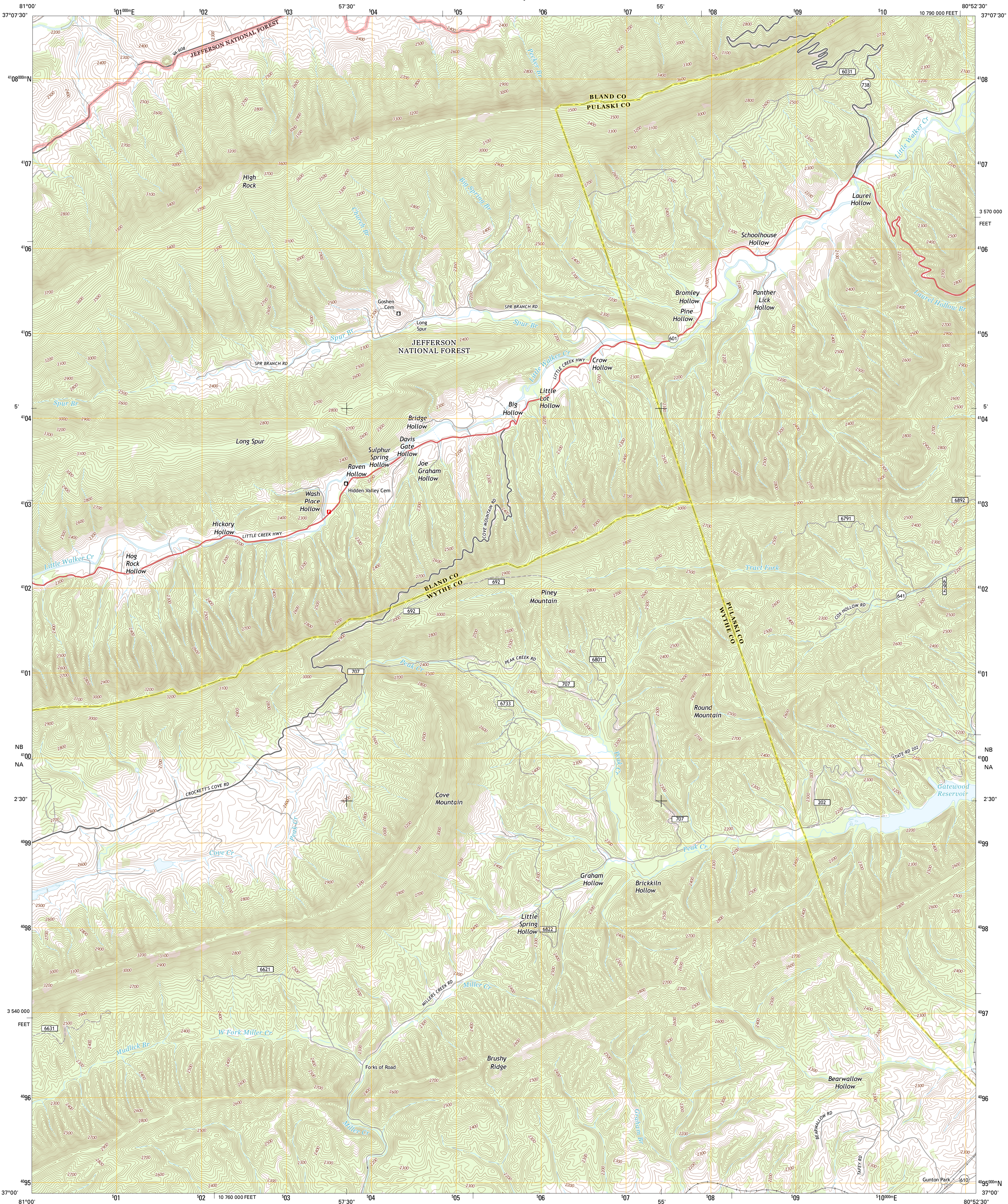




U.S. DEPARTMENT OF THE INTERIOR
U. S. GEOLOGICAL SURVEY

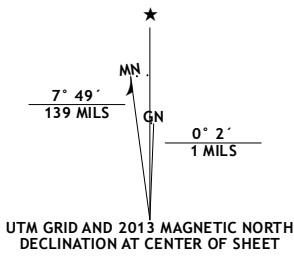


LONG SPUR QUADRANGLE
VIRGINIA
7.5-MINUTE SERIES

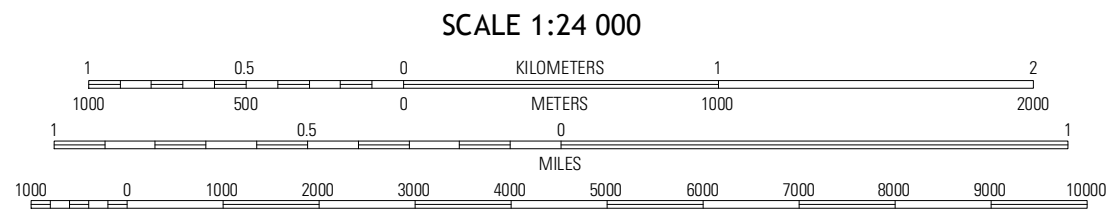


Produced by the United States Geological Survey
North American Datum of 1983 (NAD83)
World Geodetic System of 1984 (WGS84). Projection and
1 000-meter grid: Universal Transverse Mercator, Zone 17S
10 000-foot ticks: Virginia Coordinate System of 1983 (south
zone)

Imagery.....NAIP, June 2012 - September 2012
Roads.....©2006-2012 TomTom
Roads within US Forest Service Lands.....FS Topo Data
with limited Forest Service updates, 2013
Names.....GNIS, 2013
Hydrography.....National Hydrography Dataset, 2012
Contours.....National Elevation Dataset, 2001
Boundaries.....Census, IBWC, USGS, 1972 - 2012



| U.S. National Grid | |
|-----------------------|-----|
| 100,000-m Square ID | |
| NB | 100 |
| NA | 100 |
| Grid Zone Designation | |
| 17S | |



CONTOUR INTERVAL 20 FEET
NORTH AMERICAN VERTICAL DATUM OF 1988
This map was produced to conform with the
National Geospatial Program US Topo Product Standard, 2011.
A metadata file associated with this product is draft version 0.6.11



| QUADRANGLE LOCATION | | |
|---------------------|--------------|---------------|
| Rocky Gap | Mechanicburg | White Gate |
| Bland | Long Spur | Pulaski |
| Wytheville | Max Meadows | Porters Falls |

- ROAD CLASSIFICATION
- Expressway
 - Secondary Hwy
 - Ramp
 - Interstate Route
 - FS Primary Route
 - Local Connector
 - Local Road
 - 4WD
 - US Route
 - FS Passenger Route
 - State Route
 - FS High
 - Clearance Route

Check with local Forest Service unit
for current travel conditions and restrictions.

LONG SPUR, VA
2013

ADJOINING 7.5 QUADRANGLES