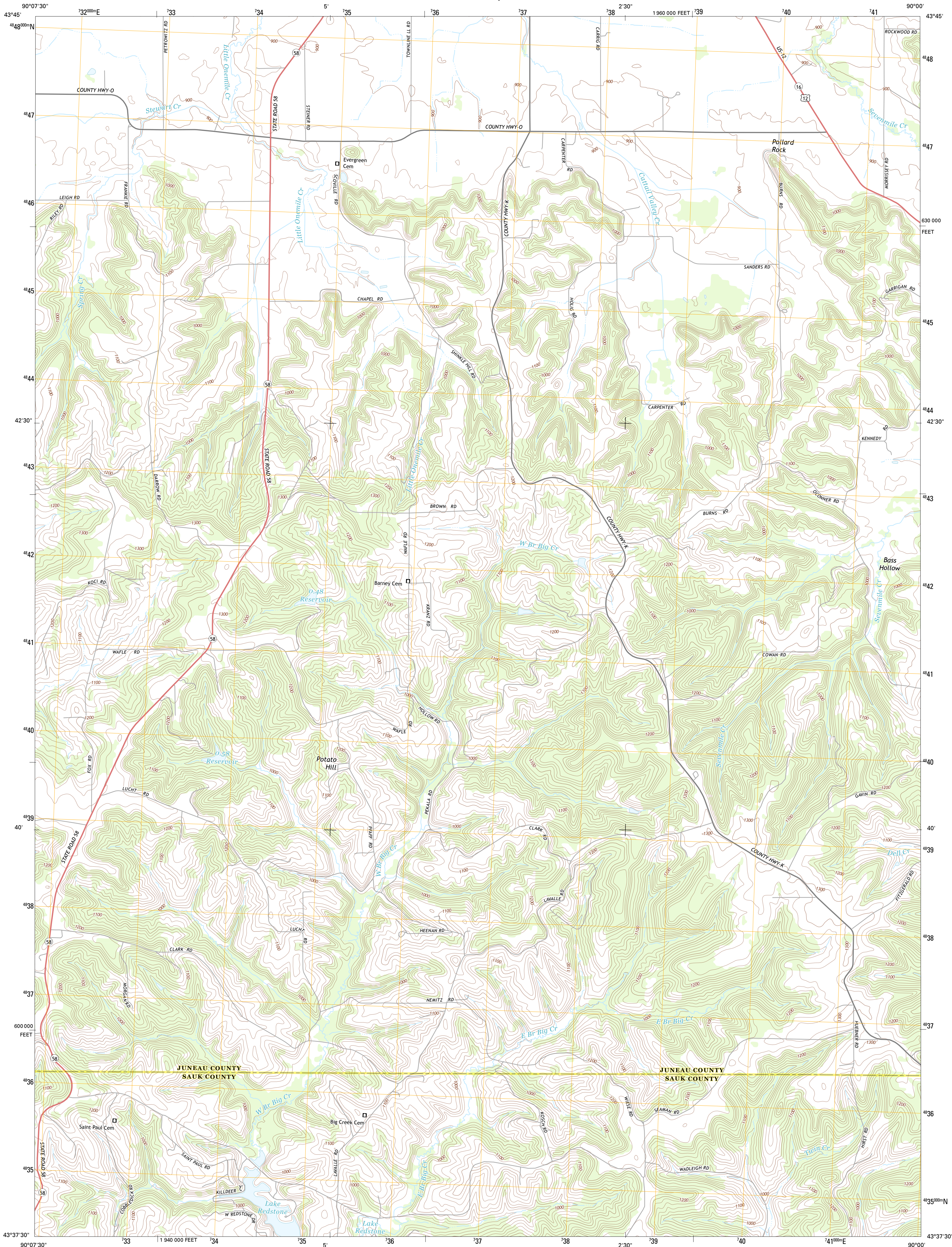




U.S. DEPARTMENT OF THE INTERIOR
U. S. GEOLOGICAL SURVEY

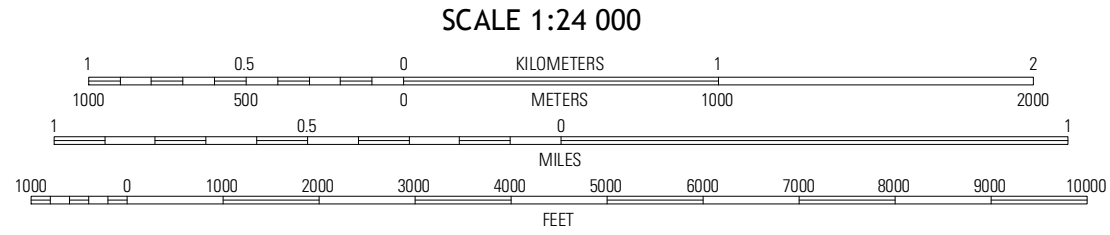
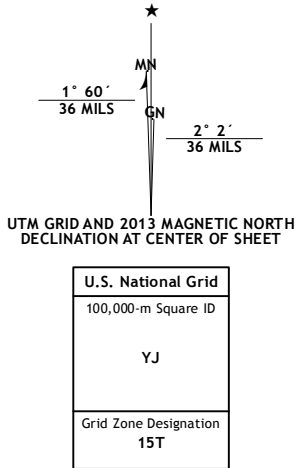


POTATO HILL QUADRANGLE
WISCONSIN
7.5-MINUTE SERIES



Produced by the United States Geological Survey
North American Datum of 1983 (NAD83)
World Geodetic System of 1984 (WGS84). Projection and
1 000-meter grid: Universal Transverse Mercator, Zone 15T
10 000-foot ticks: Wisconsin Coordinate System of 1983 (south
zone)

Imagery.....NAIP, August 2010
Roads.....©2006-2012 TomTom
Names.....GNIS, 2013
Hydrography.....National Hydrography Dataset, 2010
Contours.....National Elevation Dataset, 1998
Boundaries.....Census, IBWC, IBC, USGS, 1972 - 2012

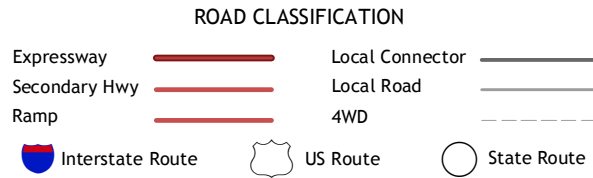


This map was produced to conform with the
National Geospatial Program US Topo Product Standard, 2011.
A metadata file associated with this product is draft version 0.6.12



New Lisbon South	Mauston	Round Bluff
Womewoc	Potato Hill	Lyndon Station
La Valle	Reedsburg West	Reedsburg East

ADJOINING 7.5' QUADRANGLES



POTATO HILL, WI
2013