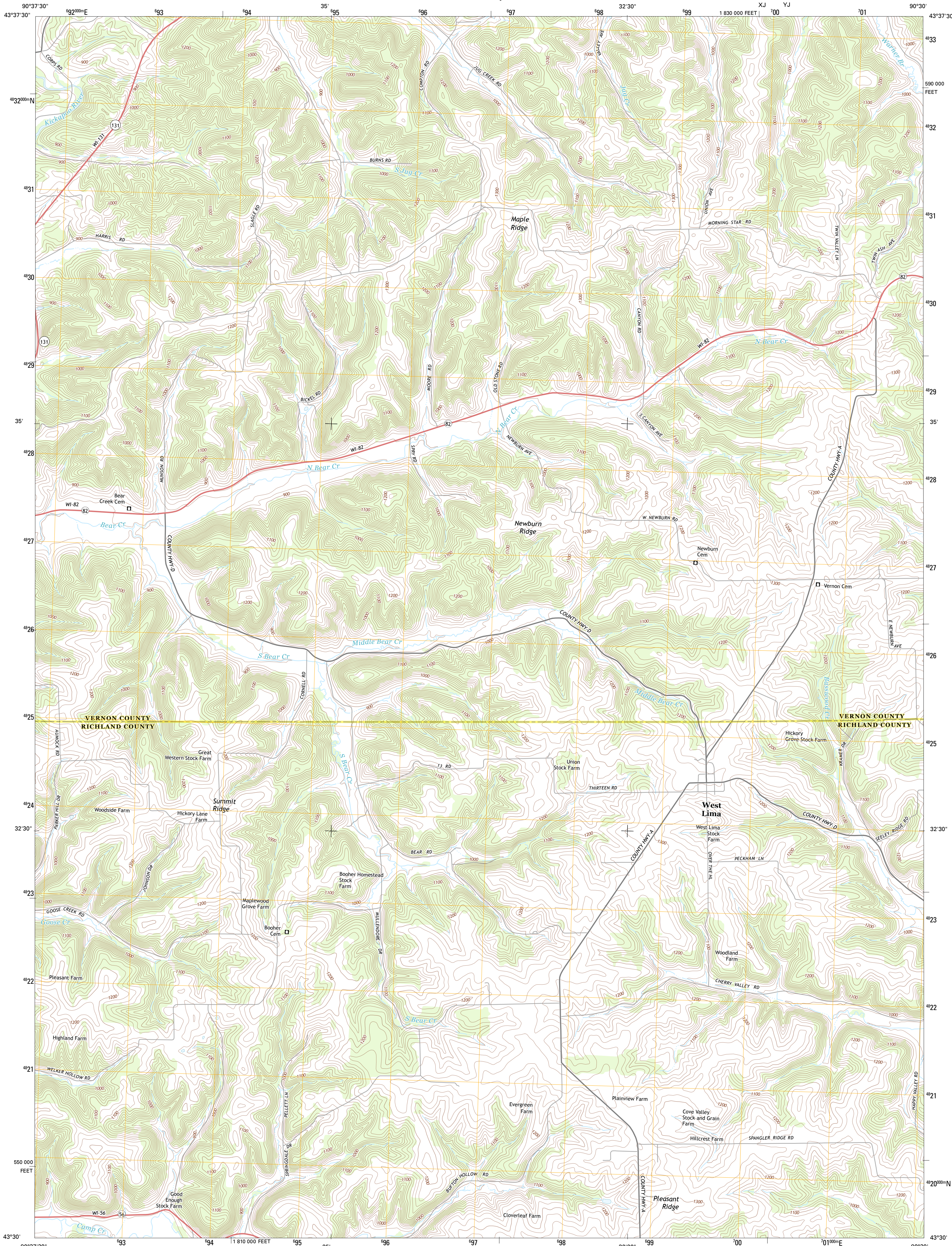




U.S. DEPARTMENT OF THE INTERIOR  
U. S. GEOLOGICAL SURVEY

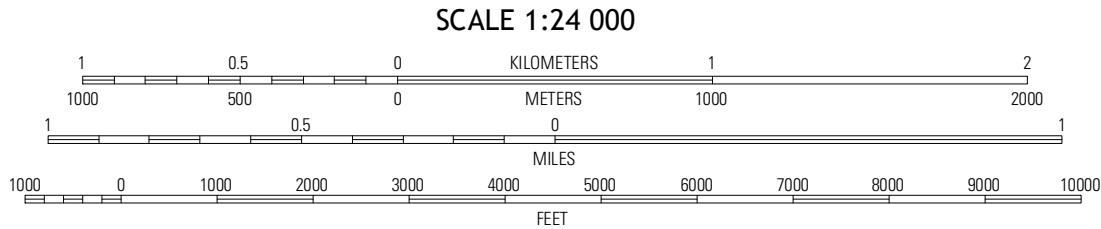
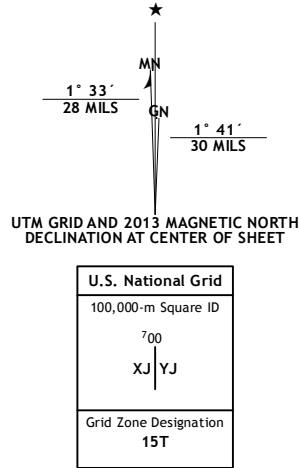


WEST LIMA QUADRANGLE  
WISCONSIN  
7.5-MINUTE SERIES

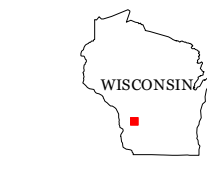


Produced by the United States Geological Survey  
North American Datum of 1983 (NAD83)  
World Geodetic System of 1984 (WGS84). Projection and  
1 000-meter grid: Universal Transverse Mercator, Zone 15T  
10 000-foot ticks: Wisconsin Coordinate System of 1983 (south zone)

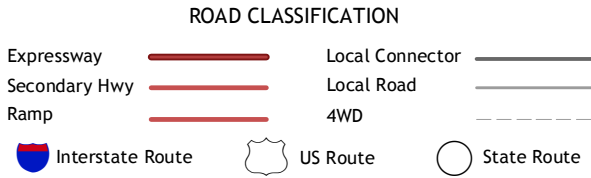
Imagery.....NAIP, July 2010 - August 2010  
Roads.....©2006-2012 TomTom  
Names.....GNIS, 2013  
Hydrography.....National Hydrography Dataset, 2010  
Contours.....National Elevation Dataset, 2007  
Boundaries.....Census, IBWC, IBC, USGS, 1972 - 2012



CONTOUR INTERVAL 20 FEET  
NORTH AMERICAN VERTICAL DATUM OF 1988  
This map was produced to conform with the  
National Geospatial Program US Topo Product Standard, 2011.  
A metadata file associated with this product is draft version 0.6.12



Dell	Ontario	Trippville
La Farge	West Lima	Yuba
Sugar Grove	Sabin	Gillingham



WEST LIMA, WI  
2013