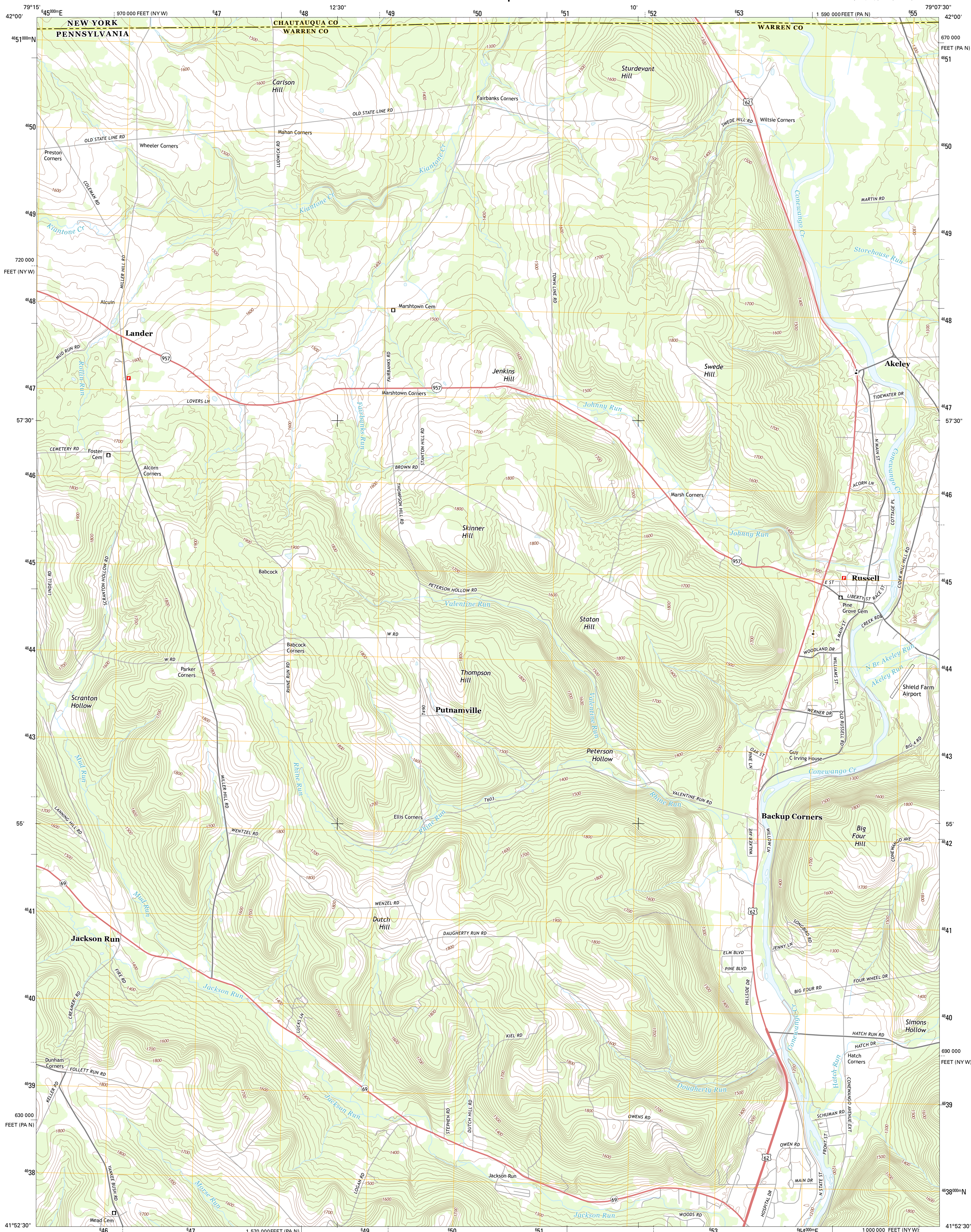




U.S. DEPARTMENT OF THE INTERIOR  
U. S. GEOLOGICAL SURVEY

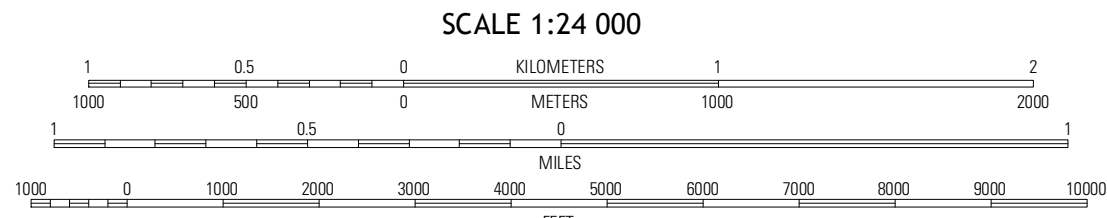
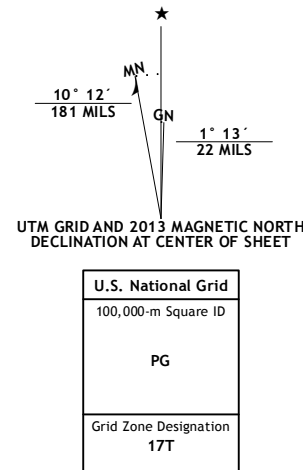


RUSSELL QUADRANGLE  
PENNSYLVANIA-NEW YORK  
7.5-MINUTE SERIES

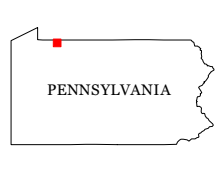


Produced by the United States Geological Survey  
North American Datum of 1983 (NAD83)  
World Geodetic System of 1984 (WGS84), Projection and  
1 000-meter grid; Universal Transverse Mercator, Zone 17T  
10 000-foot ticks; Pennsylvania Coordinate System of 1983  
(north zone), New York Coordinate System of 1983 (west zone)

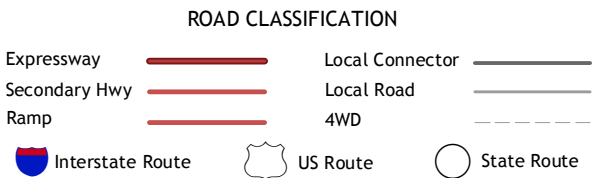
Imagery.....NAIP, May 2010 - July 2011  
Roads.....©2006-2012, TomTom  
Names.....©2013, GNS  
Hydrography.....National Hydrography Dataset, 2010  
Contours.....National Elevation Dataset, 2010  
Boundaries.....Census, IBWC, IBC, USGS, 1972 - 2012



CONTOUR INTERVAL 20 FEET  
NORTH AMERICAN VERTICAL DATUM OF 1988  
This map was produced to conform with the  
National Geospatial Program US Topo Product Standard, 2011.  
A metadata file associated with this product is draft version 0.6.11



Lakewood	Jamestown	Ivory
Sugar Grove	Russell	Scandia
Youngville	Warren	Clarendon



RUSSELL, PA-NY  
2013