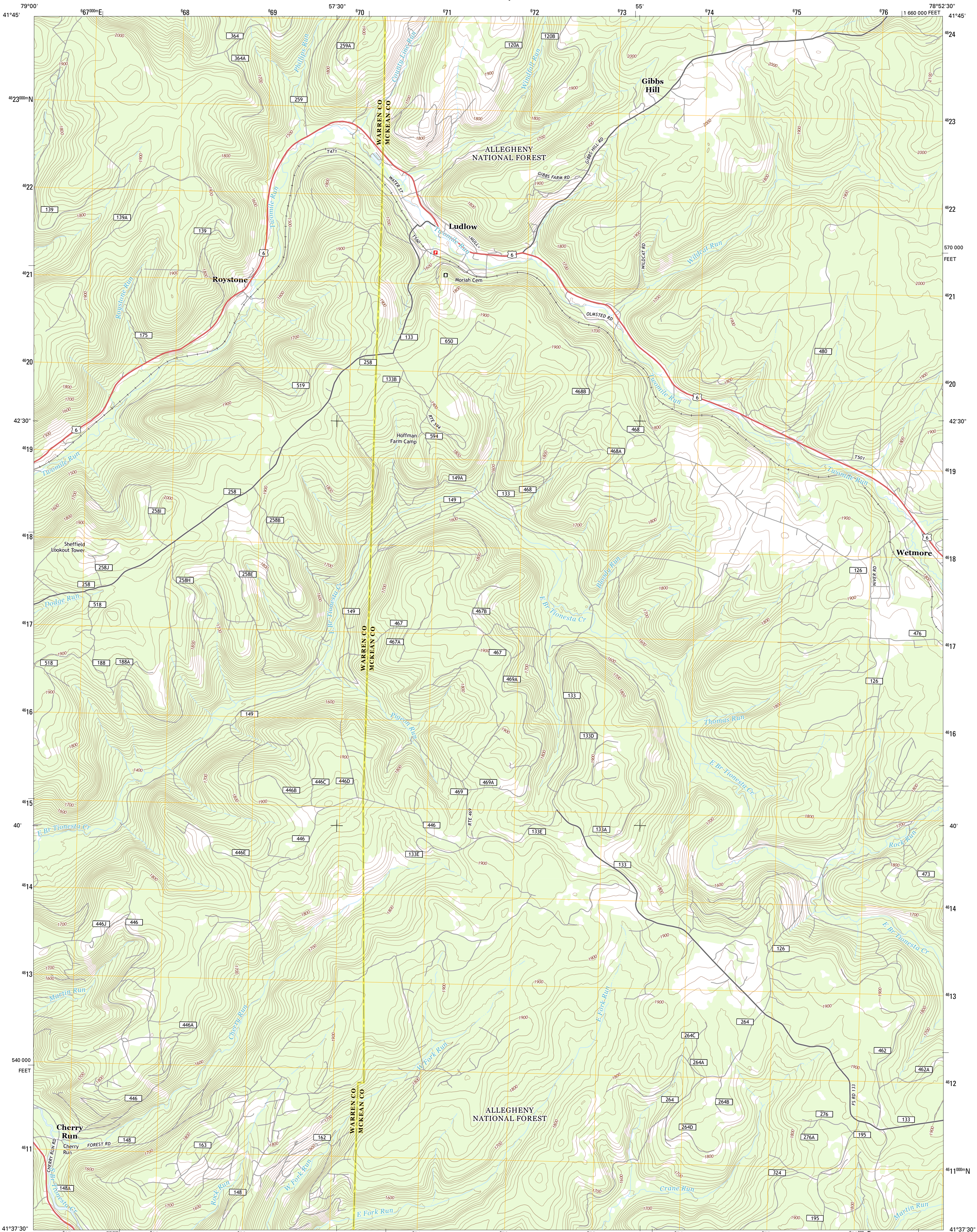




U.S. DEPARTMENT OF THE INTERIOR
U. S. GEOLOGICAL SURVEY

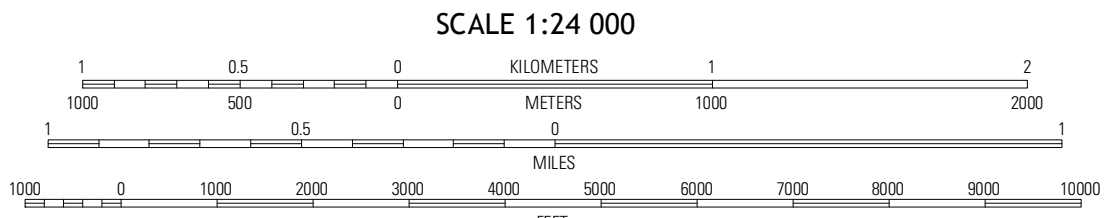
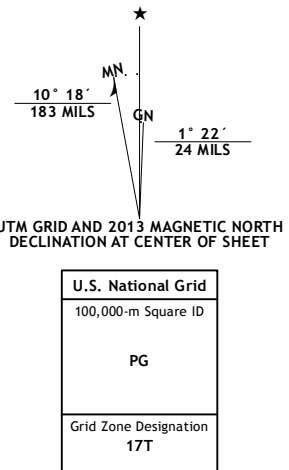


LUDLOW QUADRANGLE
PENNSYLVANIA
7.5-MINUTE SERIES

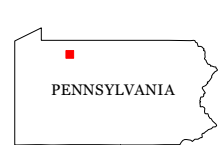


Produced by the United States Geological Survey
North American Datum of 1983 (NAD83)
World Geodetic System of 1984 (WGS84), Projection and
1 000-meter grid: Universal Transverse Mercator, Zone 17T
10 000-foot ticks: Pennsylvania Coordinate System of 1983
(north zone)

Imagery.....NAIP, May 2010
Roads.....2006-2012 TomTom
Roads within US Forest Service Lands.....FS Topo Data
with limited Forest Service updates, 2013
Names.....GNIS, 2013
Hydrography.....National Hydrography Dataset, 2010
Contours.....National Elevation Dataset, 2010
Boundaries.....Census, IBWC, IBC, USGS, 1972 - 2012



CONTOUR INTERVAL 20 FEET
NORTH AMERICAN VERTICAL DATUM OF 1988
This map was produced to conform with the
National Geospatial Program US Topo Product Standard, 2011.
A metadata file associated with this product is draft version 0.6.11



ADJOINING 7.5 QUADRANGLES		
Clarendon	Complanter Bridge	Westline
Sheffield	Ludlow	Kane
Lynch	Russell City	James City

ROAD CLASSIFICATION		
Expressway	Local Connector	State Route
Secondary Hwy	Local Road	FS High Clearance Route
Ramp	4WD	
Interstate Route	US Route	
FS Primary Route	FS Passenger Route	

Check with local Forest Service unit
for current travel conditions and restrictions.

LUDLOW, PA
2013