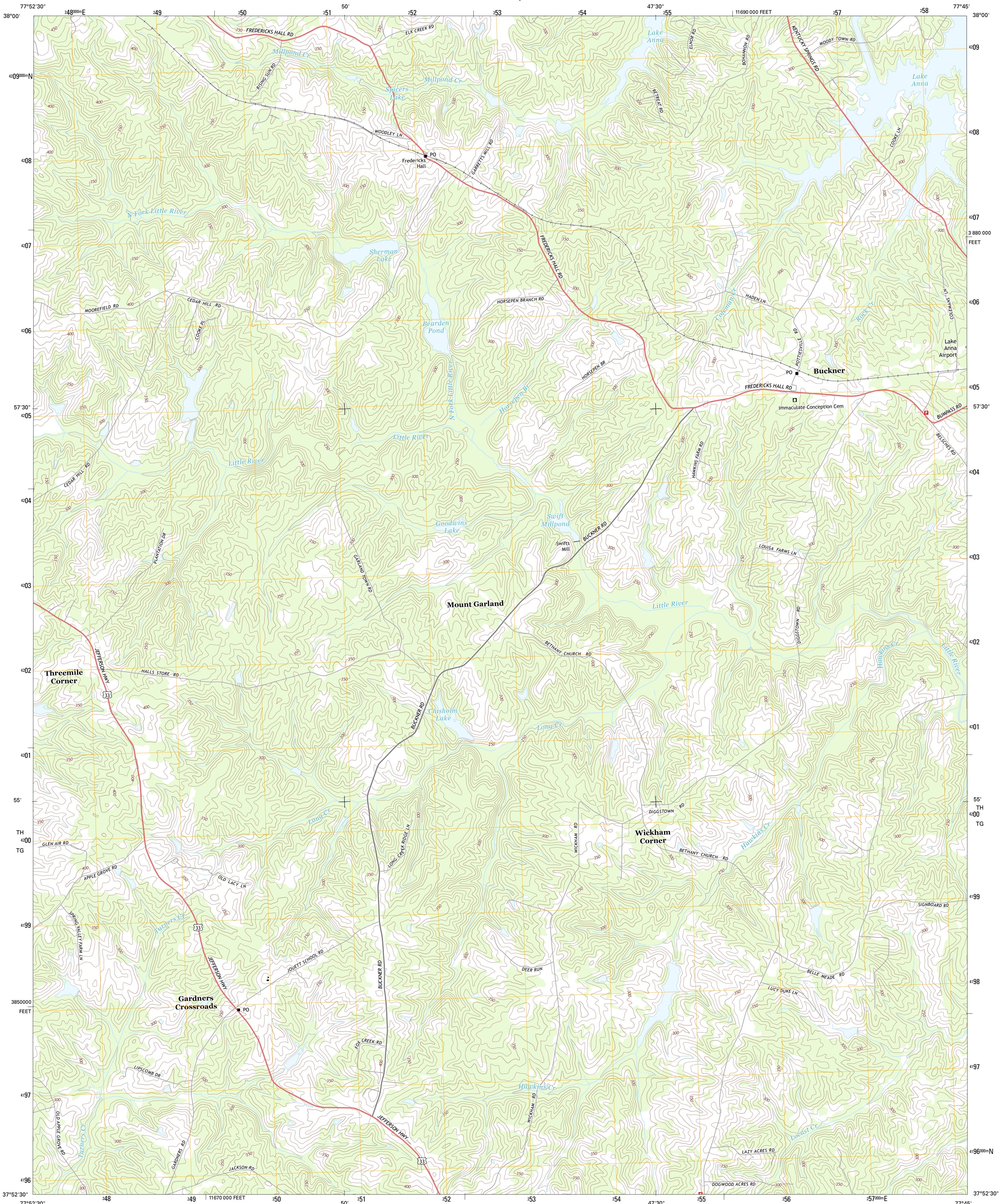




U.S. DEPARTMENT OF THE INTERIOR  
U. S. GEOLOGICAL SURVEY

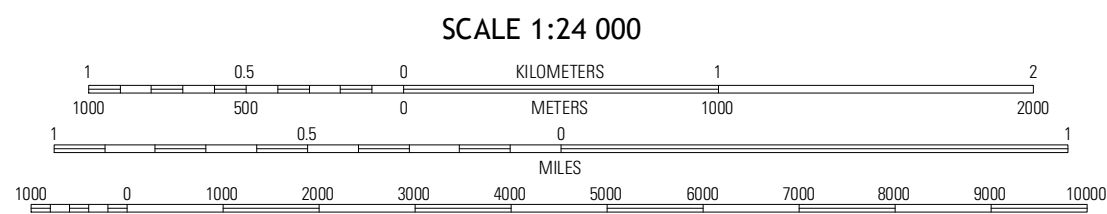
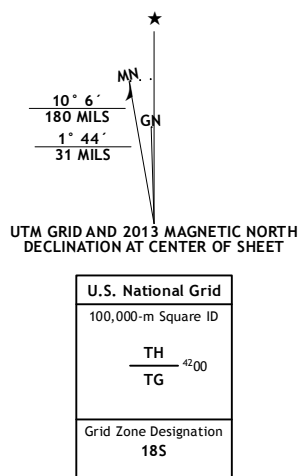


BUCKNER QUADRANGLE  
VIRGINIA-LOUISA CO.  
7.5-MINUTE SERIES

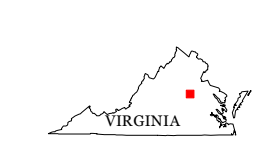


Produced by the United States Geological Survey  
North American Datum of 1983 (NAD83)  
World Geodetic System of 1984 (WGS84). Projection and  
1 000-meter grid: Universal Transverse Mercator, Zone 18S  
10 000-foot ticks: Virginia Coordinate System of 1983 (south zone)

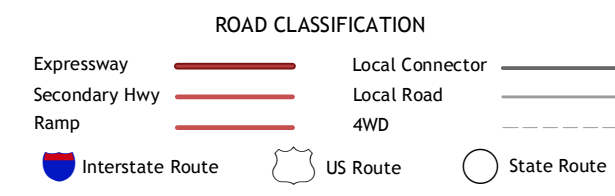
Imagery.....NAIP, May 2012  
Roads.....©2006-2012 TomTom  
Names.....GNSS, 2013  
Hydrography.....National Hydrography Dataset, 2012  
Contours.....National Elevation Dataset, 2000  
Boundaries.....Census, IBWC, USGS, 1972-2012



CONTOUR INTERVAL 10 FEET  
NORTH AMERICAN VERTICAL DATUM OF 1988  
This map was produced to conform with the  
National Geospatial Program US Topo Product Standard, 2011.  
A metadata file associated with this product is draft version 0.6.11



Mineral	Lake Anna West	Lake Anna East
Pendleton	Buckner	Beaverdam
South Anna	Dabneys	Montpelier



BUCKNER, VA  
2013

ADJOINING 7.5 QUADRANGLES