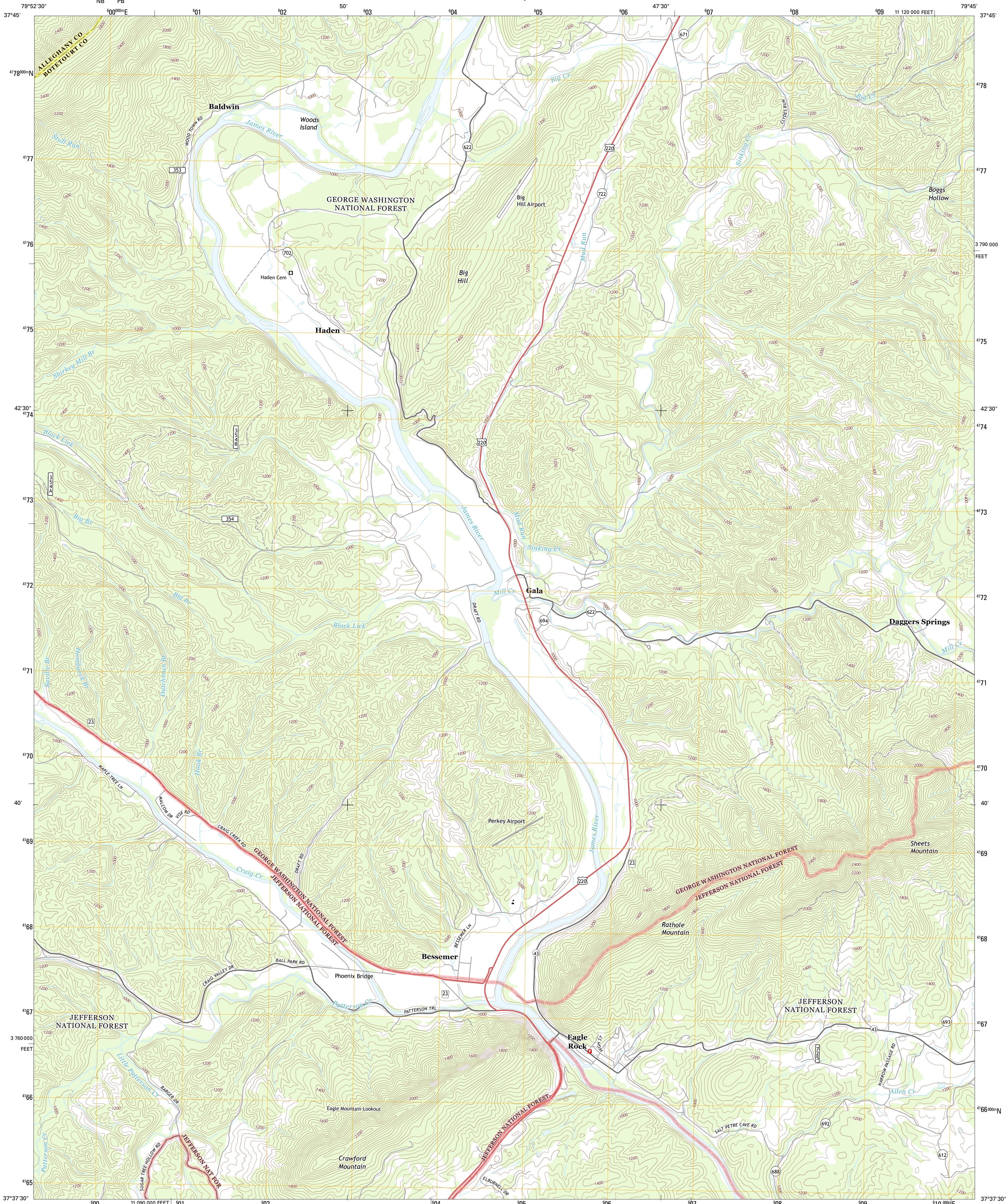




U.S. DEPARTMENT OF THE INTERIOR
U. S. GEOLOGICAL SURVEY

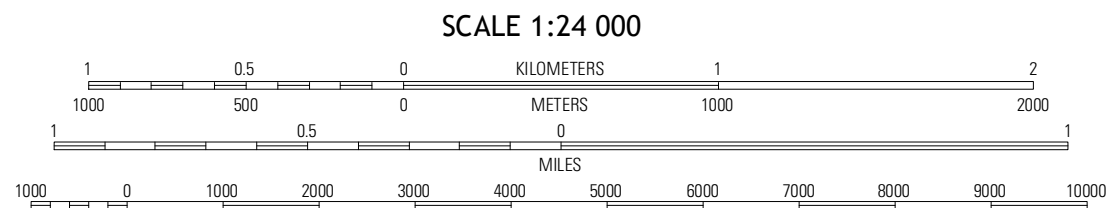
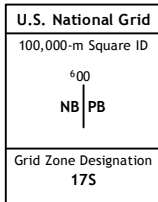
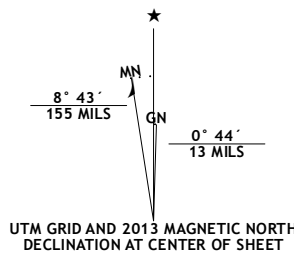


EAGLE ROCK QUADRANGLE
VIRGINIA
7.5-MINUTE SERIES



Produced by the United States Geological Survey
North American Datum of 1983 (NAD83)
World Geodetic System of 1984 (WGS84)
10 000-foot ticks: Virginia Coordinate System of 1983 (south zone)

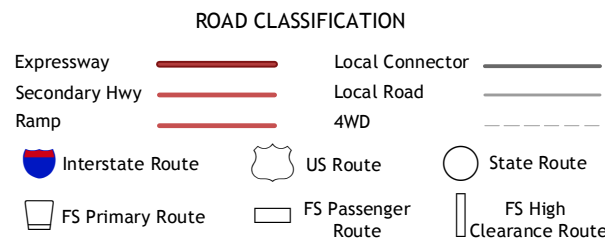
Imagery.....NAIP, June 2012
Roads.....©2006-2012 TomTom
Roads within US Forest Service Lands.....FS Topo Data with limited Forest Service updates, 2013
Names.....©GNIS, 2013
Hydrography.....National Hydrography Dataset, 2012
Contours.....National Elevation Dataset, 2002
Boundaries.....Census, IBWC, IBC, USGS, 1972 - 2012



CONTOUR INTERVAL 40 FEET
NORTH AMERICAN VERTICAL DATUM OF 1988
This map was produced to conform with the National Geospatial Program US Topo Product Standard, 2011.
A metadata file associated with this product is draft version 0.6.11



QUADRANGLE LOCATION		
Covington	Clifton Forge	Longdale Furnace
Strum	Eagle Rock	Sugarloaf Mountain
Oriskany	Salisbury	Buchanan



Check with local Forest Service unit for current travel conditions and restrictions.

EAGLE ROCK, VA
2013