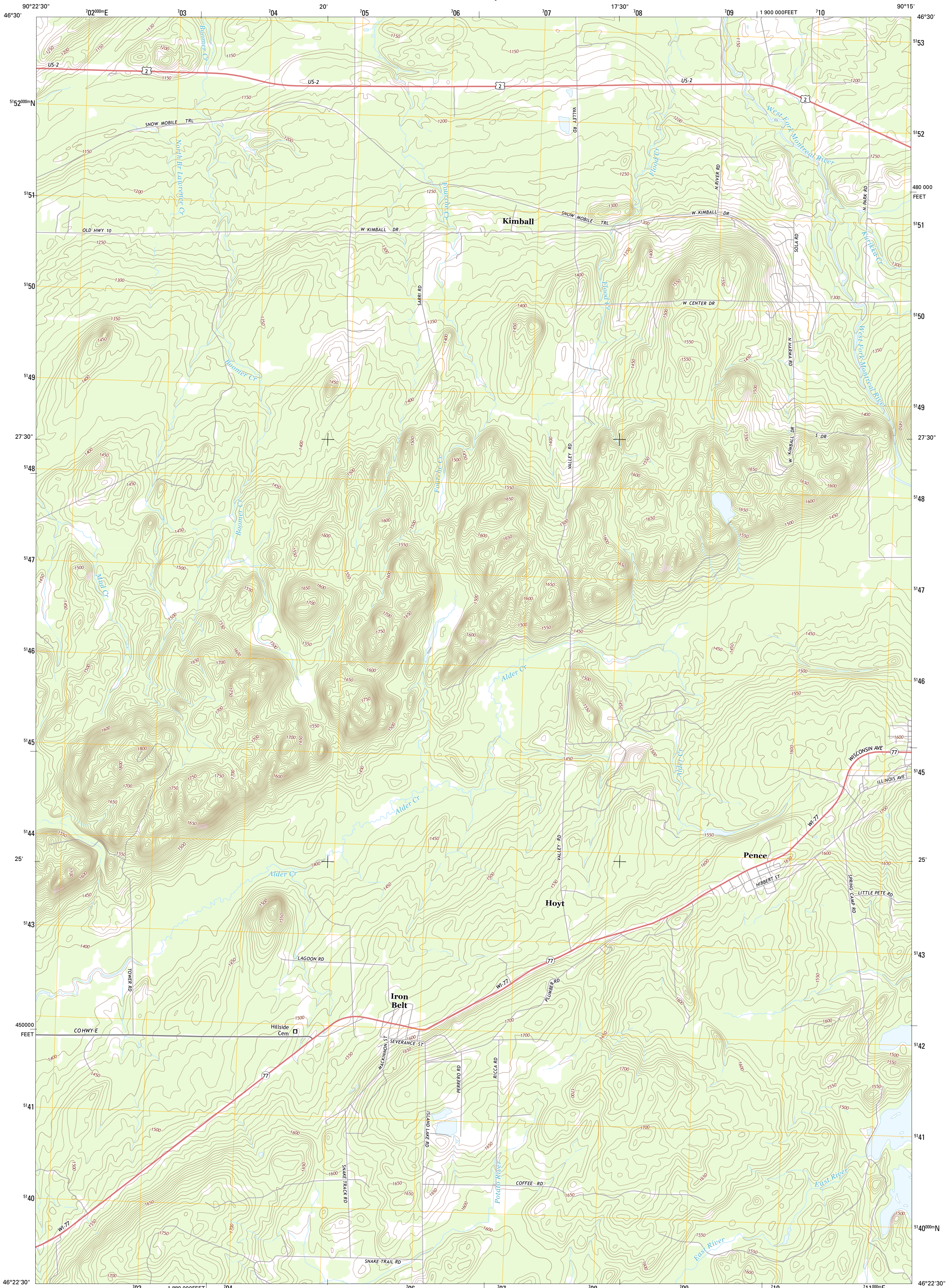




U.S. DEPARTMENT OF THE INTERIOR
U. S. GEOLOGICAL SURVEY

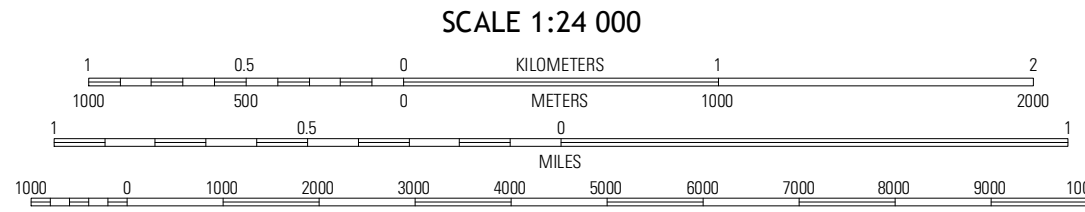
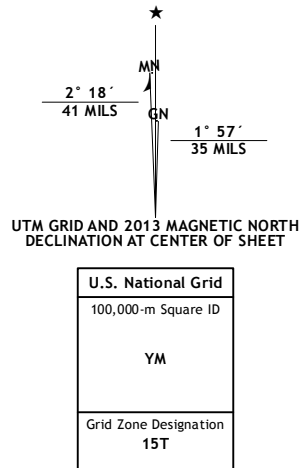


IRON BELT QUADRANGLE
WISCONSIN-IRON CO.
7.5-MINUTE SERIES



Produced by the United States Geological Survey
North American Datum of 1983 (NAD83)
World Geodetic System of 1984 (WGS84). Projection and
1 000-meter grid: Universal Transverse Mercator, Zone 15T
10 000-foot ticks: Wisconsin Coordinate System of 1983 (north
zone)

Imagery.....NAIP, August 2010
Roads.....©2006-2012 TomTom
Names.....GNIS, 2013
Hydrography.....National Hydrography Dataset, 2010
Contours.....National Elevation Dataset, 2001
Boundaries.....Census, IBWC, IBC, USGS, 1972 - 2012

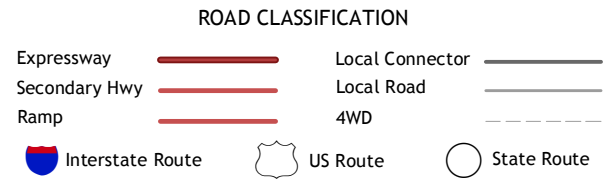


CONTOUR INTERVAL 10 FEET
NORTH AMERICAN VERTICAL DATUM OF 1988
This map was produced to conform with the
National Geospatial Program US Topo Product Standard, 2011.
A metadata file associated with this product is draft version 0.6.12



Oconto Bay	Little Girls Point	North Ironwood
Saxon	Iron Belt	Ironwood
Upson	Turntable Creek	Pine Lake

ADJOINING 7.5 QUADRANGLES



IRON BELT, WI
2013