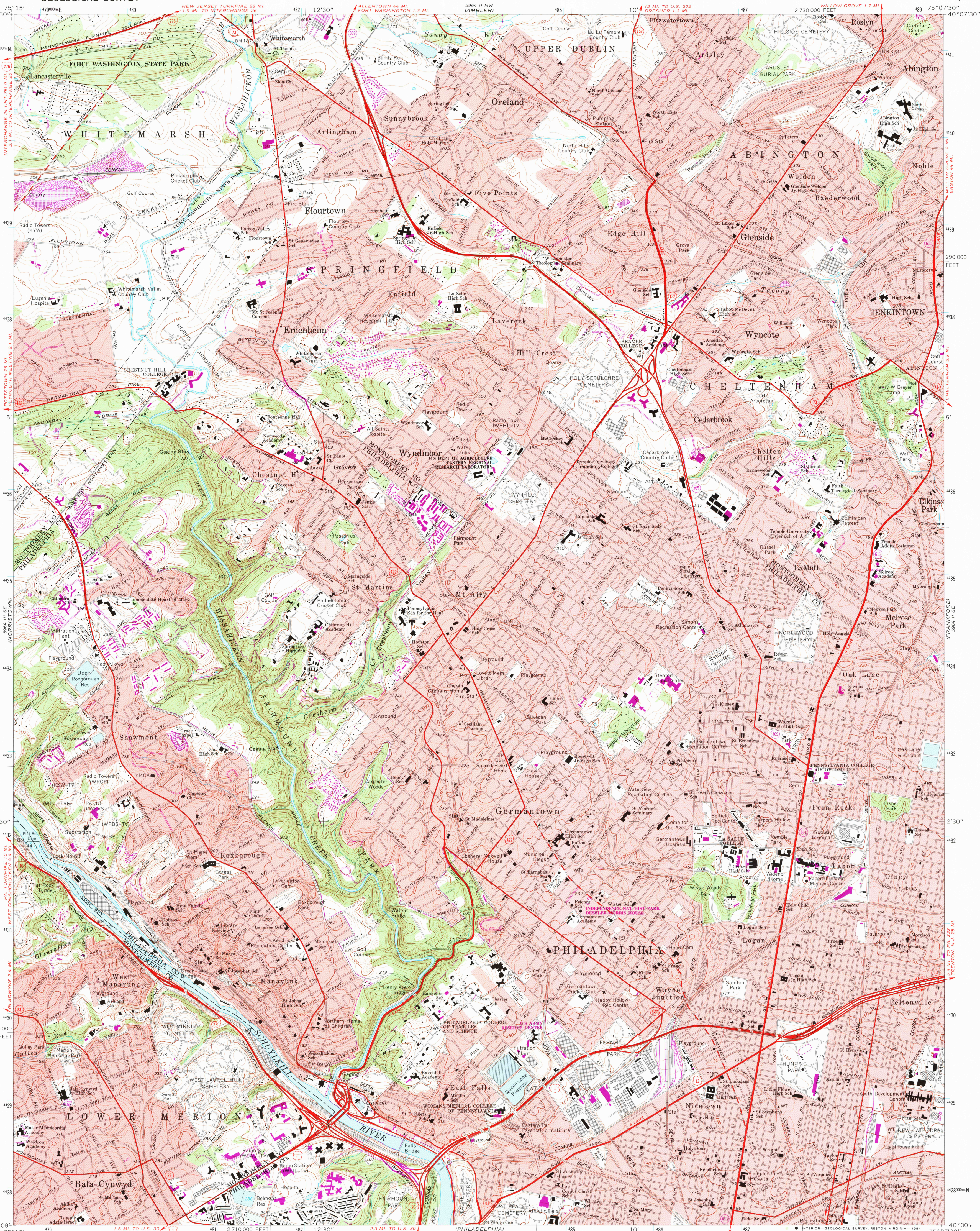


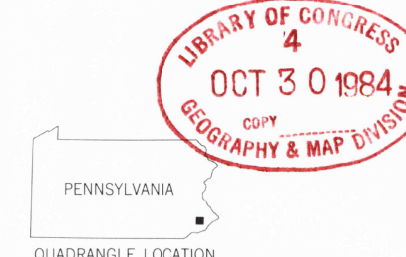
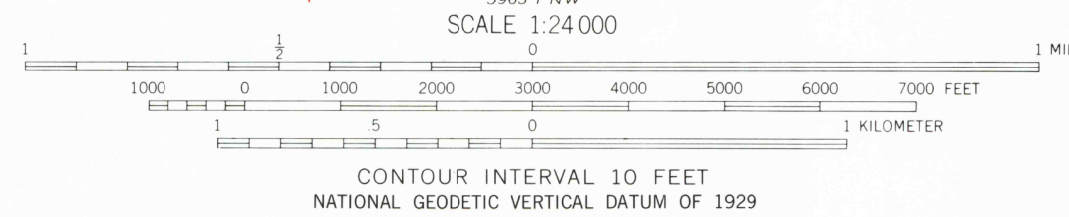
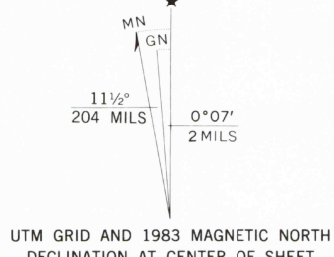
UNITED STATES
DEPARTMENT OF THE INTERIOR
GEOLOGICAL SURVEY

GERMANTOWN QUADRANGLE
PENNSYLVANIA
7.5 MINUTE SERIES (TOPOGRAPHIC)



Mapped, edited, and published by the Geological Survey
in cooperation with Pennsylvania Department of Interior Affairs,
Topographic and Geologic Survey
Control by USGS, NOS/NOAA, and USCE

Topography by photogrammetric methods from aerial photographs
taken 1950. Field checked 1952. Revised from aerial
photographs taken 1965. Field checked 1967
Polyconic projection. 10,000-foot grid ticks based on
Pennsylvania coordinate system, south zone
1000-meter Universal Transverse Mercator grid ticks, zone 18, shown in blue
1927 North American Datum
To place on the predicted North American Datum 1983
move the projection lines 6 meters south and 31 meters
west as shown by dashed corner ticks
Red tint indicates areas in which only landmark buildings are shown
There may be private inholdings within the boundaries of
the National or State reservations shown on this map



ROAD CLASSIFICATION	
Heavy-duty	Light-duty
Medium-duty	Unimproved dirt
Interstate Route	U.S. Route
	State Route

GERMANTOWN, PA.

40075-A2-T024
1967
PHOTOREVISED 1983
DMA 5964 II SW - SERIES V831