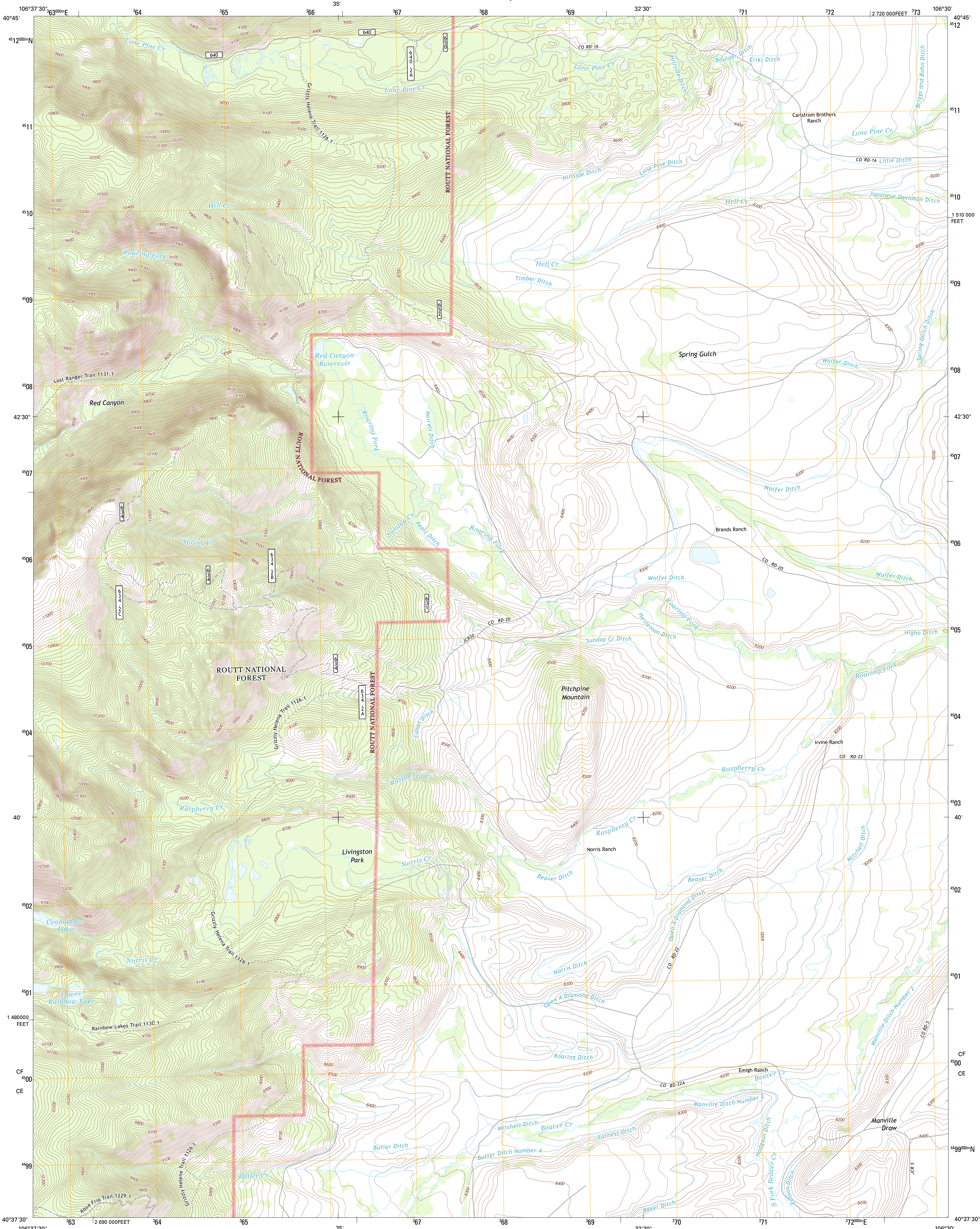




U.S. DEPARTMENT OF THE INTERIOR
U. S. GEOLOGICAL SURVEY



PITCHPINE MOUNTAIN QUADRANGLE
COLORADO-JACKSON CO.
7.5-MINUTE SERIES



Produced by the United States Geological Survey
North American Datum of 1983 (NAD83)
World Geodetic System of 1984 (WGS84) Projection and
1 000-meter grid. Universal Transverse Mercator, Zone 13T
10 000-foot ticks: Colorado Coordinate System of 1983 (north zone)

Imagery.....NAIP, July 2011
Roads.....2006-2012, TomTom
Roads within US Forest Service Lands.....FS Topo Data
with limited Forest Service updates, 2013
Names.....GNIS, 2013
Hydrography.....National Hydrography Dataset, 2011
Contours.....National Elevation Dataset, 2003
Boundaries.....Census, IBC, USGS, 1972 - 2012
Public Land Survey System.....BLM, 2011

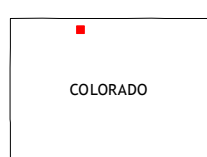
UTM GRID AND 2013 MAGNETIC NORTH
DECLINATION AT CENTER OF SHEET

U.S. National Grid
100,000-m Square ID
CF
CE
Grid Zone Designation
13T

SCALE 1:24 000
1 000 500 0 500 1000 2000
KILOMETERS
1 000 500 0 500 1000 2000
METERS
1 000 2000 3000 4000 5000 6000 7000 8000 9000 10000
MILES
FEET

CONTOUR INTERVAL 20 FEET
NORTH AMERICAN VERTICAL DATUM OF 1988

This map was produced to conform with the
National Geospatial Program US Topo Product Standard, 2011.
A metadata file associated with this product is draft version 0.6.14



Mount Zerkel	Boettcher Lake	Lake John
Mount Ethel	Pitchpine Mountain	Delaney Butte
Buffalo Pass	Teal Lake	Coalmont

ADJOINING 7.5' QUADRANGLES

ROAD CLASSIFICATION
Expressway
Secondary Hwy
Ramp
Interstate Route
FS Primary Route
Local Connector
Local Road
4WD
US Route
FS Passenger Route
State Route
Clearance Route

Check with local Forest Service unit
for current travel conditions and restrictions.

PITCHPINE MOUNTAIN, CO
2013