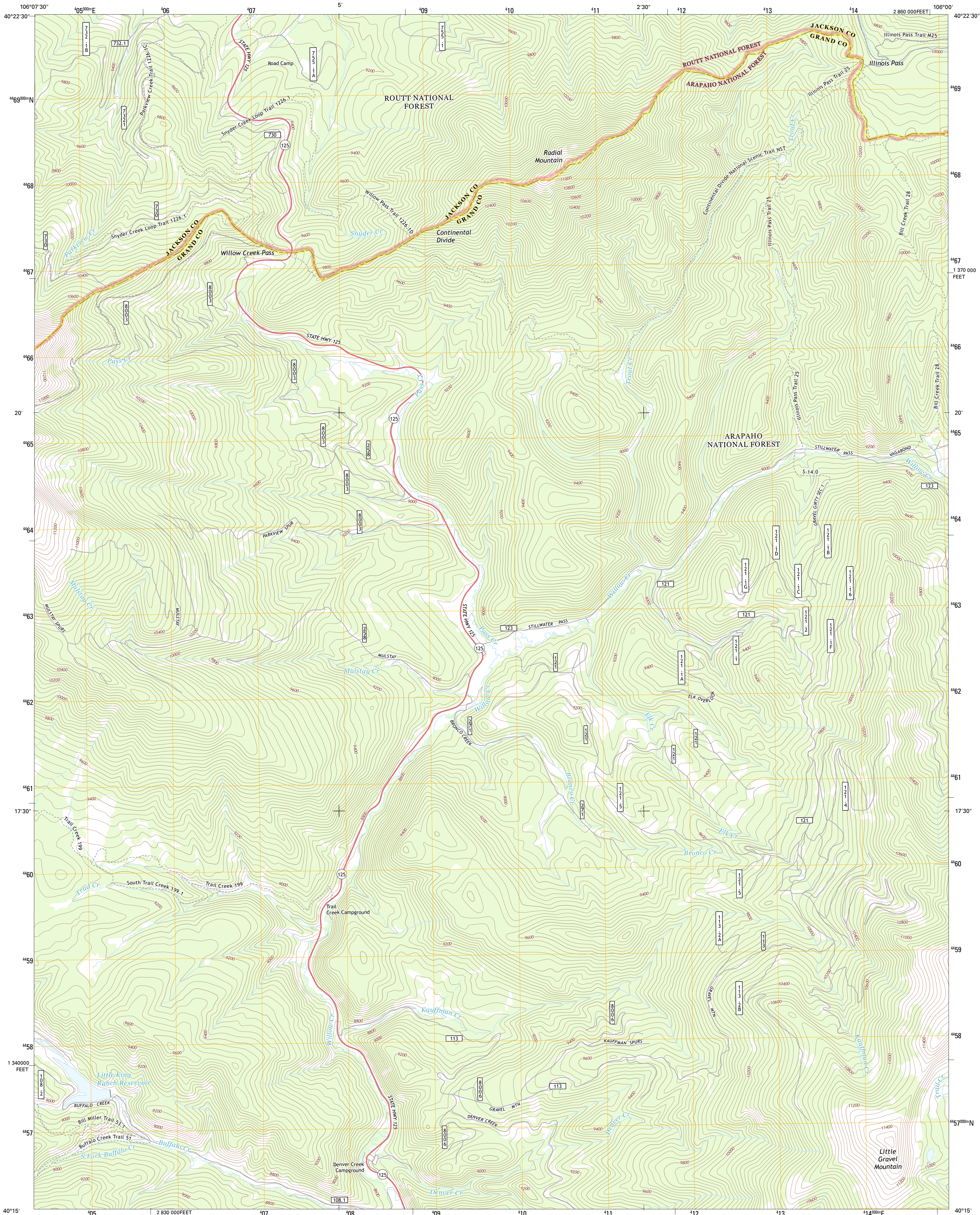




U.S. DEPARTMENT OF THE INTERIOR
U. S. GEOLOGICAL SURVEY



RADIAL MOUNTAIN QUADRANGLE
COLORADO
7.5-MINUTE SERIES



Produced by the United States Geological Survey
North American Datum of 1983 (NAD83)
World Geodetic System of 1984 (WGS84). Projection and
1 000-meter grid: Universal Transverse Mercator, Zone 13T
10 000-foot ticks: Colorado Coordinate System of 1983 (north
zone)

Imagery.....NAIP, August 2011
Roads.....©2006-2012 TomTom
Roads within US Forest Service Lands.....FS Topo Data
with limited Forest Service updates, 2013
Names.....GNIS, 2013
Hydrography.....National Hydrography Dataset, 2011
Contours.....National Elevation Dataset, 2002
Boundaries.....Census, IBWC, IBC, USGS, 1972 - 2012
Public Land Survey System.....BLM, 2011

UTM GRID AND 2013 MAGNETIC NORTH
DECLINATION AT CENTER OF SHEET

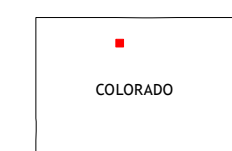
U.S. National Grid
100,000 m Square ID
DE
Grid Zone Designation
13T

SCALE 1:24 000

1 000 500 0 500 1000 2000
KILOMETERS
1 000 500 0 500 1000 2000
METERS
1 000 0 1000 2000 3000 4000 5000 6000 7000 8000 9000 10000
MILES
FEET

CONTOUR INTERVAL 40 FEET
NORTH AMERICAN VERTICAL DATUM OF 1988

This map was produced to conform with the
National Geospatial Program US Topo Product Standard, 2011.
A metadata file associated with this product is draft version 0.6.14



| | | |
|----------------------|------------------------|---------------------|
| Rand | Jack Creek Ranch | Mount Richthofen |
| Parkview Mountain | Radial Mountain | Bowen Mountain |
| Corral Peaks | Cabin Creek | Trail Mountain |

ROAD CLASSIFICATION

Expressway
Secondary Hwy
Ramp

Local Connector
Local Road
4WD

Interstate Route
US Route
FS Primary Route
FS Passenger Route
FS High
Clearance Route

Check with local Forest Service unit
for current travel conditions and restrictions.

RADIAL MOUNTAIN, CO
2013

ADJOINING 7.5 QUADRANGLES