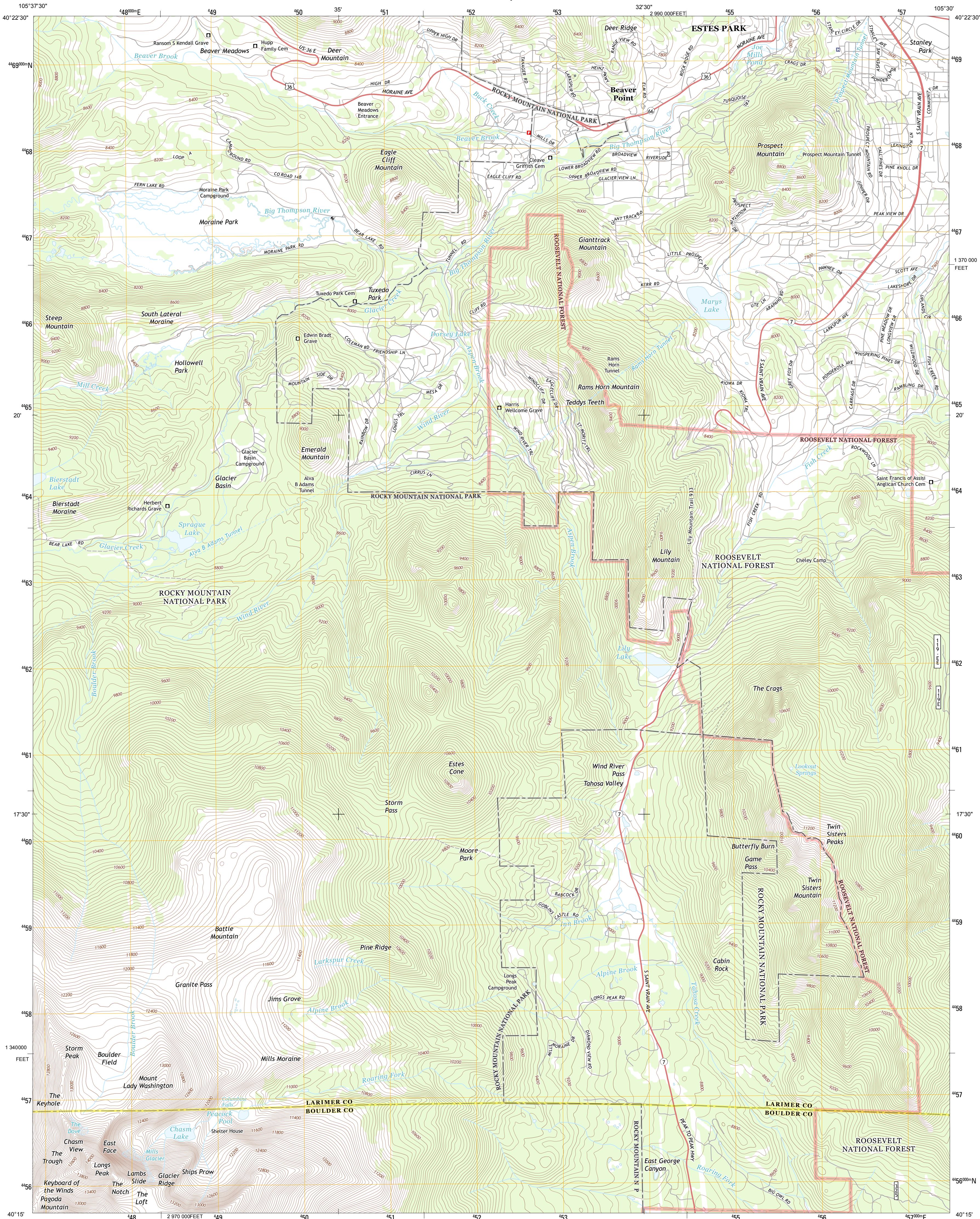




U.S. DEPARTMENT OF THE INTERIOR
U. S. GEOLOGICAL SURVEY

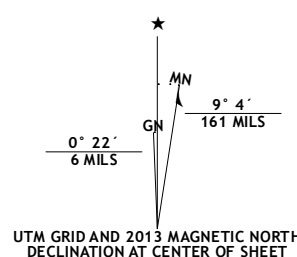


LONGS PEAK QUADRANGLE
COLORADO
7.5-MINUTE SERIES

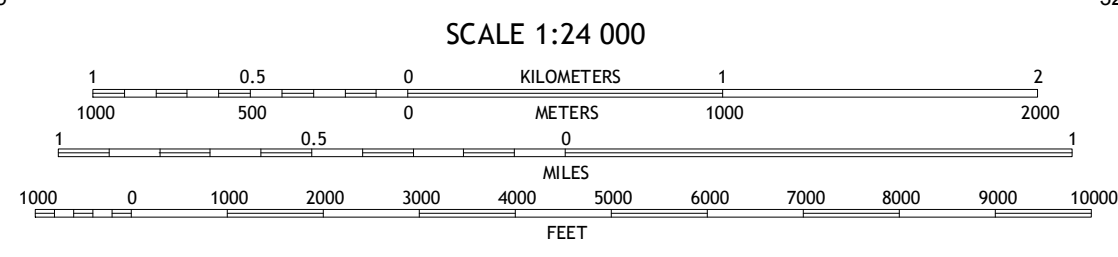


Produced by the United States Geological Survey
North American Datum of 1983 (NAD83)
World Geodetic System of 1984 (WGS84) Projection and
1 000-meter grid: Universal Transverse Mercator, Zone 13T
10 000-foot ticks: Colorado Coordinate System of 1983 (north
zone)

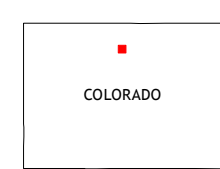
Imagery.....NAIP, August 2011 - September 2011
Roads.....©2006-2012 TomTom
Roads within US Forest Service Lands.....FS Topo Data
with limited Forest Service updates, 2013
Names.....GNIS, 2013
Hydrography.....National Hydrography Dataset, 2011
Contours.....National Elevation Dataset, 2001
Boundaries.....Census, IBWC, IBC, USGS, 1972 - 2012
Public Land Survey System.....BLM, 2011



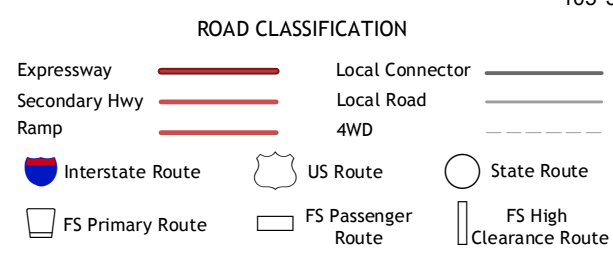
| U.S. National Grid |
|-----------------------|
| 100,000 m Square ID |
| DE |
| Grid Zone Designation |
| 13T |



CONTOUR INTERVAL 40 FEET
NORTH AMERICAN VERTICAL DATUM OF 1988
This map was produced to conform with the
National Geospatial Program US Topo Product Standard, 2011.
A metadata file associated with this product is draft version 0.6.14



| Trail Ridge | Estes Park | Glen Haven |
|----------------|------------|---------------|
| McHenry's Peak | Longs Peak | Panorama Peak |
| Isolation Peak | Allenspark | Raymond |



Check with local Forest Service unit
for current travel conditions and restrictions.

LONGS PEAK, CO
2013

ADJOINING 7.5 QUADRANGLES