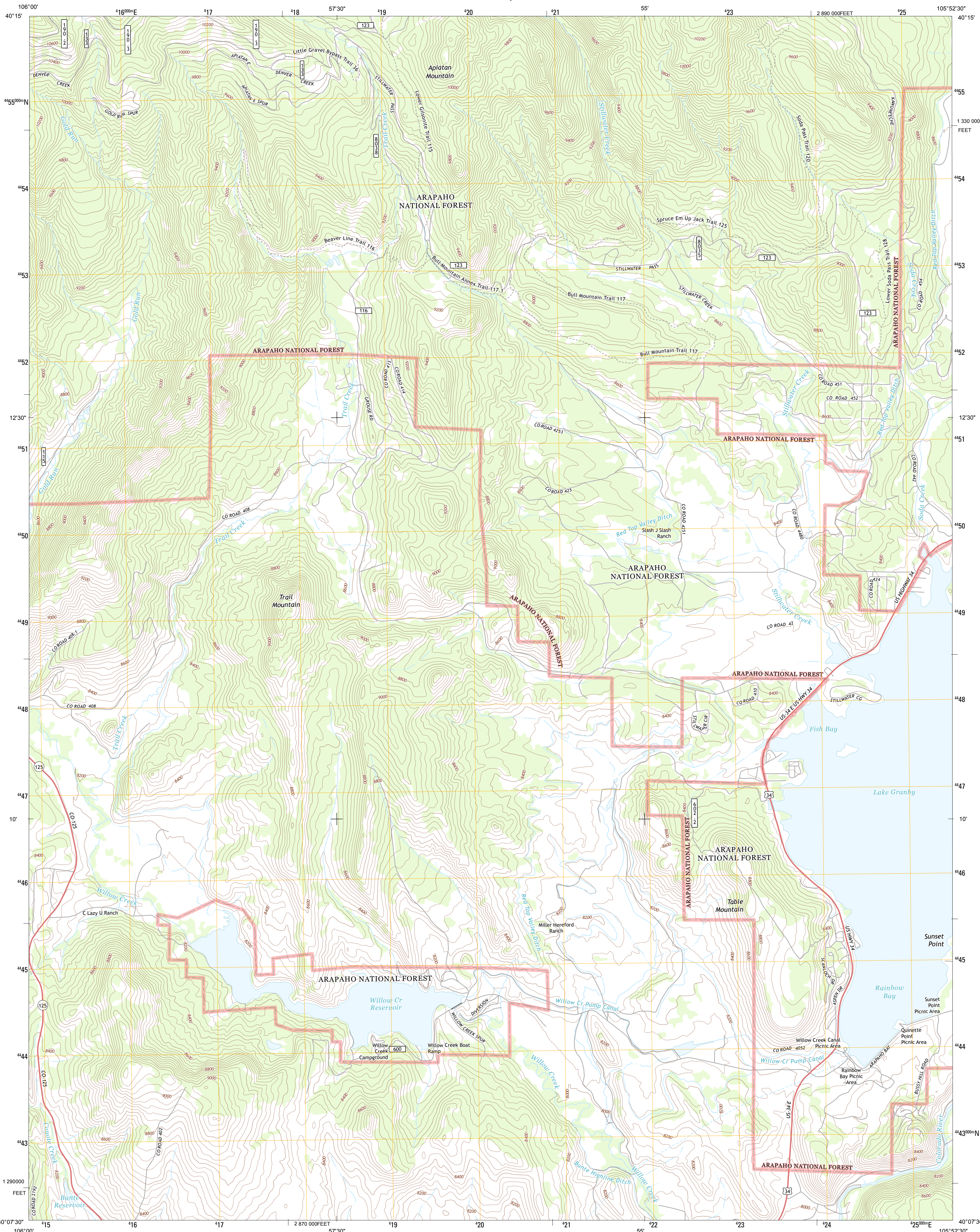




U.S. DEPARTMENT OF THE INTERIOR  
U. S. GEOLOGICAL SURVEY



TRAIL MOUNTAIN QUADRANGLE  
COLORADO-GRAND CO.  
7.5-MINUTE SERIES



Produced by the United States Geological Survey  
North American Datum of 1983 (NAD83)  
World Geodetic System of 1984 (WGS84). Projection and  
1 000-meter grid: Universal Transverse Mercator, Zone 13T  
10 000-foot ticks: Colorado Coordinate System of 1983 (north  
zone)

Imagery.....NAIP, August 2011  
Roads.....©2006-2012 TomTom  
Roads within US Forest Service Lands.....FS Topo Data  
with limited Forest Service updates, 2013  
Names.....GNIS, 2013  
Hydrography.....National Hydrography Dataset, 2011  
Contours.....National Elevation Dataset, 2011  
Boundaries.....Census, IBWC, IBC, USGS, 1972 - 2012  
Public Land Survey System.....BLM, 2011

UTM GRID AND 2013 MAGNETIC NORTH  
DECLINATION AT CENTER OF SHEET

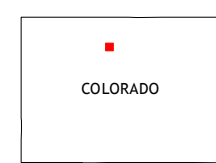
U.S. National Grid  
100,000-m Square ID  
DE  
Grid Zone Designation  
13T

SCALE 1:24 000

1 0.5 0 1 2  
1000 500 0 1000 2000  
KILOMETERS  
1 0.5 0 1000 2000  
METERS  
1000 0 1000 2000 3000 4000 5000 6000 7000 8000 9000 10000  
MILES  
FEET

CONTOUR INTERVAL 40 FEET  
NORTH AMERICAN VERTICAL DATUM OF 1988

This map was produced to conform with the  
National Geospatial Program US Topo Product Standard, 2011.  
A metadata file associated with this product is draft version 0.6.14



QUADRANGLE LOCATION		
Radial Mountain	Bowen Mountain	Grand Lake
Cabin Creek	Trail Mountain	Shadow Mountain
Hot Sulphur Springs	Granby	Strawberry Lake

ADJOINING 7.5 QUADRANGLES

ROAD CLASSIFICATION

Expressway  
Secondary Hwy  
Ramp  
Interstate Route  
US Route  
FS Primary Route  
Local Connector  
Local Road  
4WD  
FS Passenger Route  
FS High  
Clearance Route  
State Route

Check with local Forest Service unit  
for current travel conditions and restrictions.

TRAIL MOUNTAIN, CO  
2013