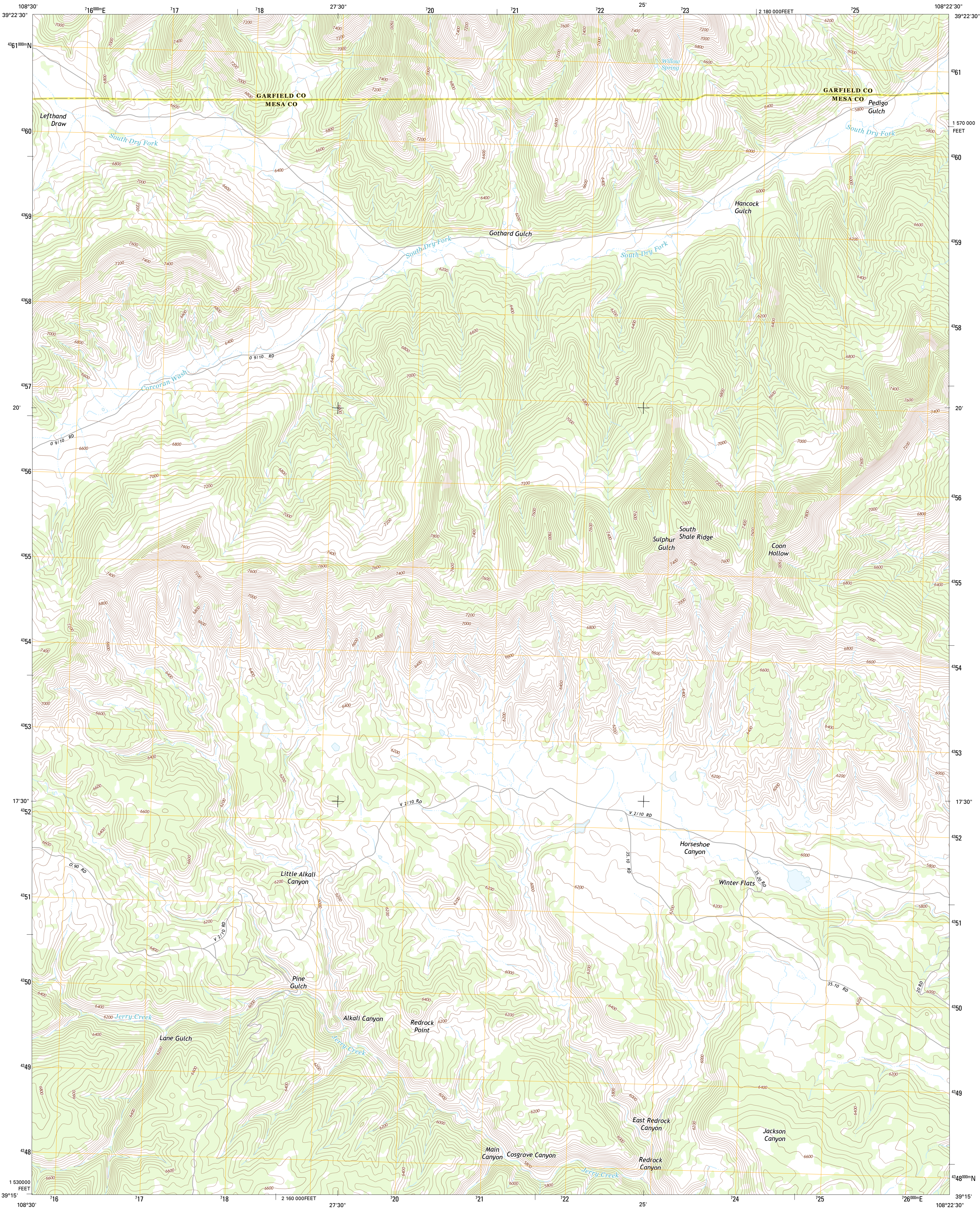




U.S. DEPARTMENT OF THE INTERIOR
U. S. GEOLOGICAL SURVEY

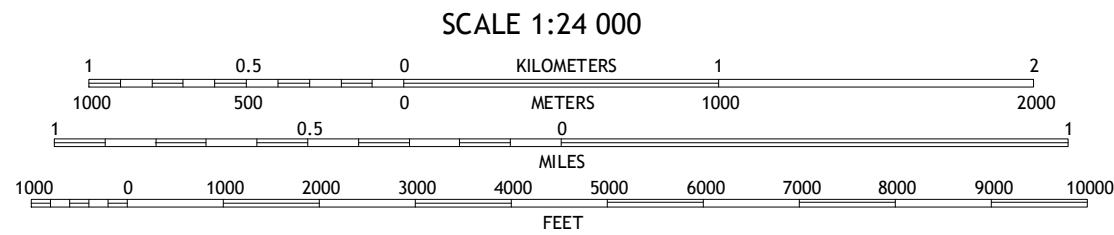
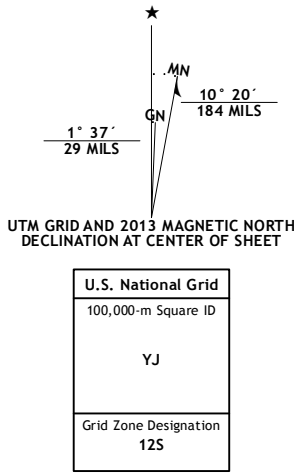


WINTER FLATS QUADRANGLE
COLORADO
7.5-MINUTE SERIES

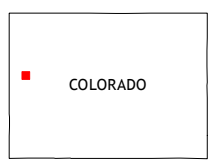


Produced by the United States Geological Survey
North American Datum of 1983 (NAD83)
World Geodetic System of 1984 (WGS84). Projection and
1 000-meter grid: Universal Transverse Mercator, Zone 12S
10 000-foot ticks: Colorado Coordinate System of 1983 (central
zone)

Imagery.....NAIP, July 2011
Roads.....©2006-2012 TomTom
Names.....©2013
Hydrography.....National Hydrography Dataset, 2011
Contours.....National Elevation Dataset, 1999
Boundaries.....Census, IBG, USGS, 1972-2012
Public Land Survey System.....BLM, 2011



This map was produced to conform with the
National Geospatial Program US Topo Product Standard, 2011.
A metadata file associated with this product is draft version 0.6.14



| QUADRANGLE LOCATION | | |
|---------------------|----------------|-------------------|
| Middle Dry Fork | The Saddle | Long Point |
| Corcoran Peak | Winter Flats | Wagon Track Ridge |
| Corcoran Point | Round Mountain | Cameo |

ADJOINING 7.5 QUADRANGLES

WINTER FLATS, CO
2013