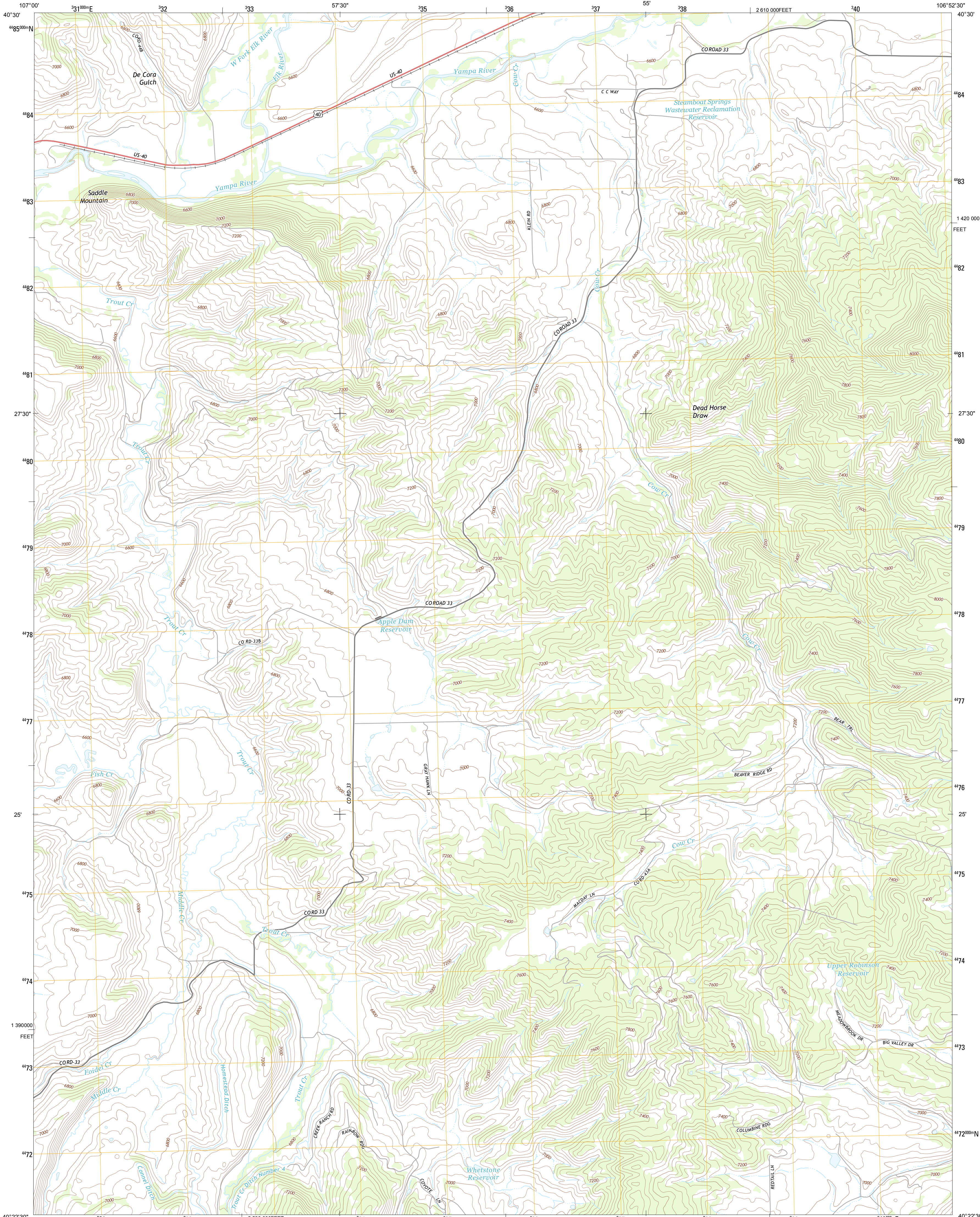




U.S. DEPARTMENT OF THE INTERIOR  
U. S. GEOLOGICAL SURVEY

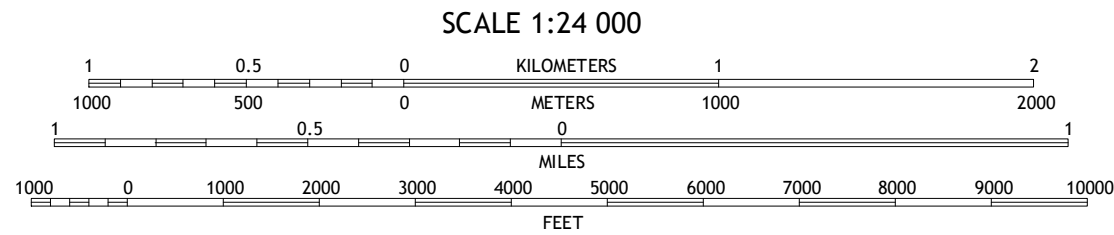
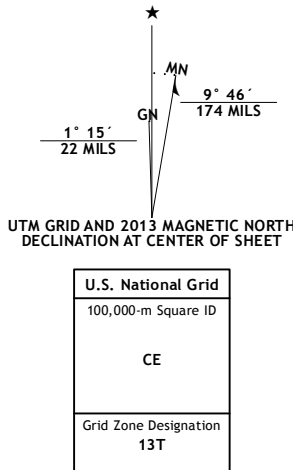


COW CREEK QUADRANGLE  
COLORADO-ROUTT CO.  
7.5-MINUTE SERIES

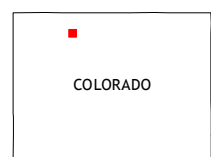


Produced by the United States Geological Survey  
North American Datum of 1983 (NAD83)  
World Geodetic System of 1984 (WGS84), Projection and  
1 000-meter grid: Universal Transverse Mercator, Zone 13T  
10 000-foot ticks: Colorado Coordinate System of 1983 (north  
zone)

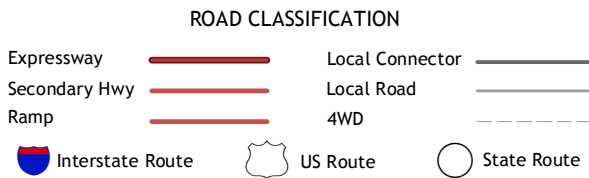
Imagery.....NAIP, July 2011  
Roads.....©2006-2012 TomTom  
Names.....©GNS, 2013  
Hydrography.....National Hydrography Dataset, 2011  
Contours.....National Elevation Dataset, 2005  
Boundaries.....Census, IBWC, IBG, USGS, 1972 - 2012  
Public Land Survey System.....BLM, 2011



This map was produced to conform with the  
National Geospatial Program US Topo Product Standard, 2011.  
A metadata file associated with this product is draft version 0.6.14



Wolf Mountain	Mad Creek	Rocky Peak
Miller	Cow Creek	Steamboat Springs
Rattlesnake Butte	Oak Creek	Blacktail Mountain



COW CREEK, CO  
2013