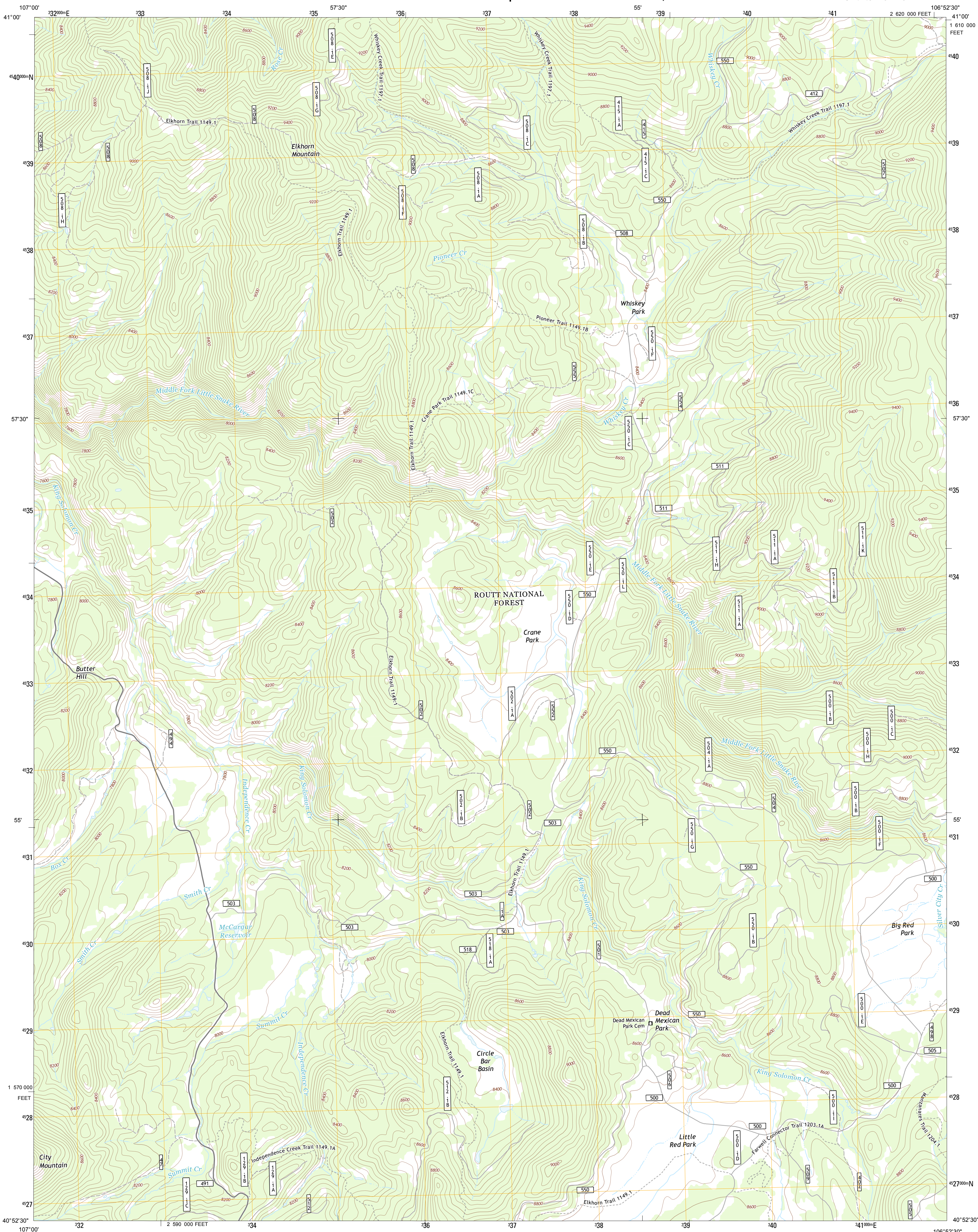




U.S. DEPARTMENT OF THE INTERIOR
U. S. GEOLOGICAL SURVEY

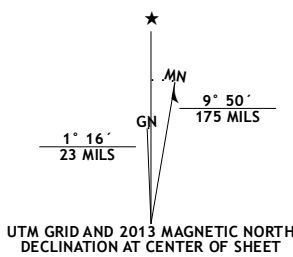


ELKHORN MOUNTAIN QUADRANGLE
COLORADO-ROUTT CO.
7.5-MINUTE SERIES

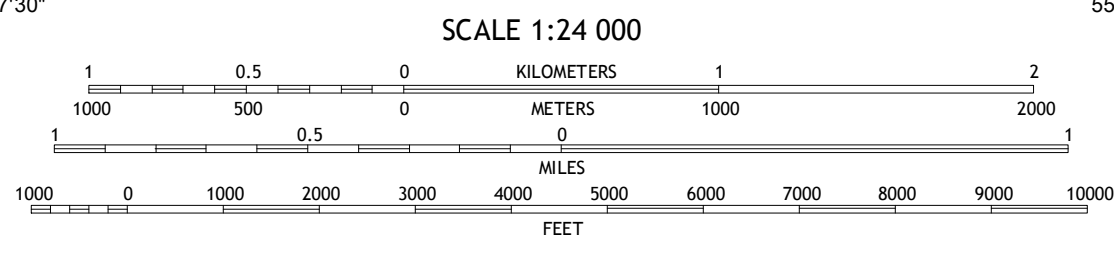


Produced by the United States Geological Survey
North American Datum of 1983 (NAD83)
World Geodetic System of 1984 (WGS84). Projection and
1 000-meter grid: Universal Transverse Mercator, Zone 13T
10 000-foot ticks: Colorado Coordinate System of 1983 (north
zone)

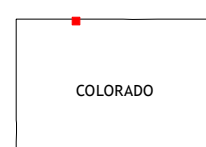
Imagery.....NAIP, July 2011 - August 2011
Roads.....©2006-2012, TomTom
Roads within US Forest Service Lands.....FS Topo Data
with limited Forest Service updates, 2013
Names.....GNIS, 2013
Hydrography.....National Hydrography Dataset, 2011
Contours.....National Elevation Dataset, 2004
Boundaries.....Census, IBWC, IBC, USGS, 1972 - 2012
Public Land Survey System.....BLM, 2011



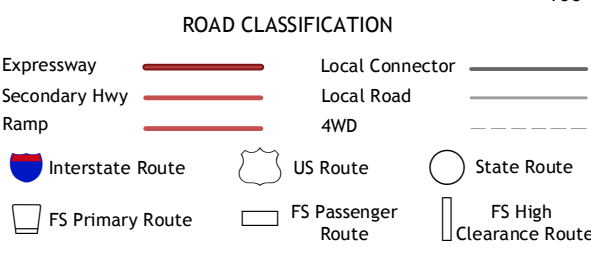
U.S. National Grid
100,000 m Square ID
CF
Grid Zone Designation
13T



CONTOUR INTERVAL 40 FEET
NORTH AMERICAN VERTICAL DATUM OF 1988
This map was produced to conform with the
National Geospatial Program US Topo Product Standard, 2011.
A metadata file associated with this product is draft version 0.6.14



Fletcher Peak	Solomon Creek	Dudley Creek
Shield Mountain	Elkhorn Mountain	West Fork Lake
Meadow Peak	Hahn's Peak	Farwell Mountain



Check with local Forest Service unit
for current travel conditions and restrictions.

ELKHORN MOUNTAIN, CO
2013