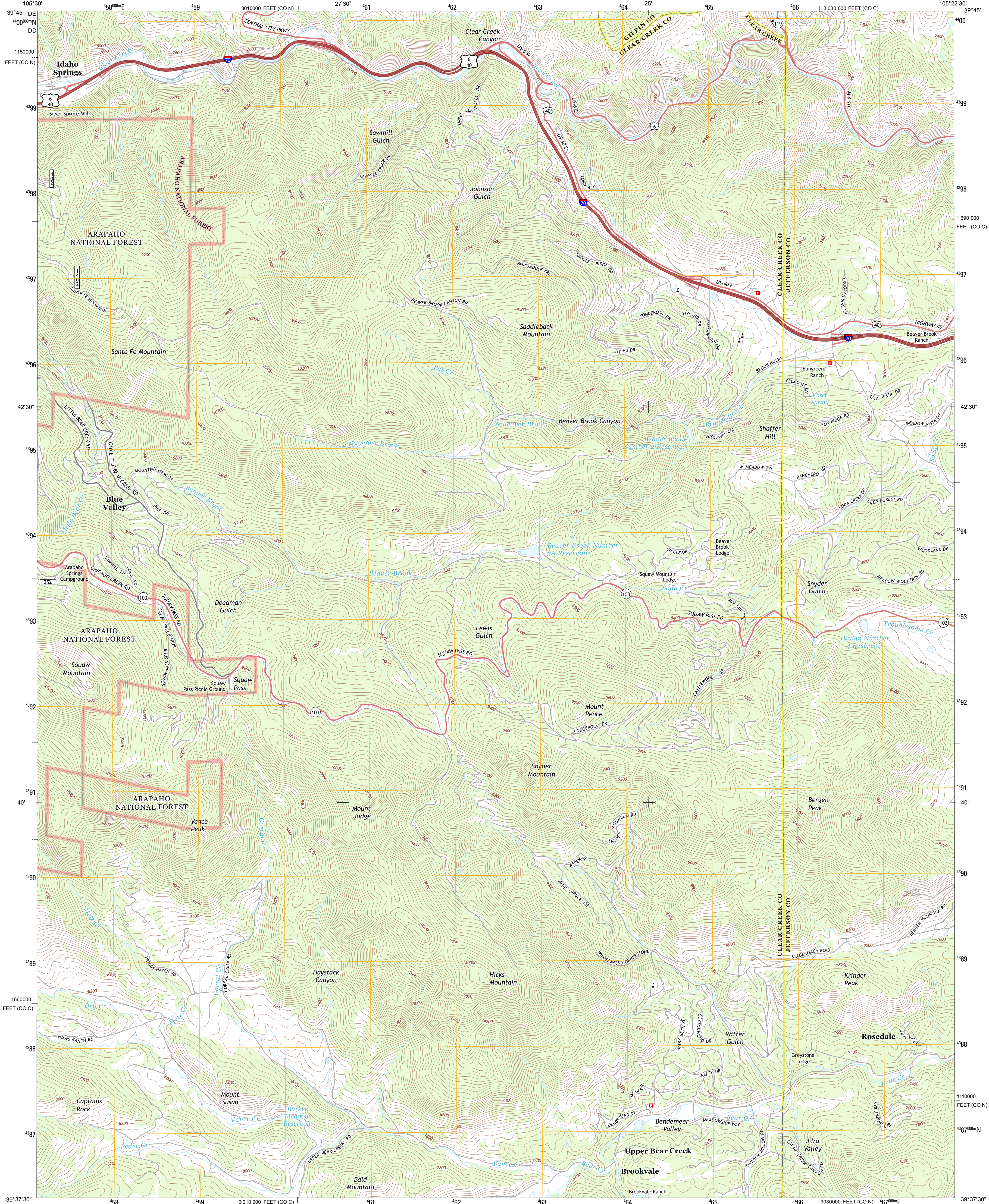




U.S. DEPARTMENT OF THE INTERIOR
U. S. GEOLOGICAL SURVEY



SQUAW PASS QUADRANGLE
COLORADO
7.5-MINUTE SERIES



Produced by the United States Geological Survey
North American Datum of 1983 (NAD83)
World Geodetic System of 1984 (WGS84). Projection and
1,000-meter grid: Universal Transverse Mercator, Zone 13S
10,000-foot ticks: Colorado Coordinate System of 1983 (central
and north zones)

Imagery.....NAIP, September 2011
Roads.....©2006-2012, TomTom
Roads within US Forest Service Lands.....FS Topo Data
with limited Forest Service updates, 2013
Names.....GNS, 2013
Hydrography.....National Hydrography Dataset, 2011
Contours.....National Elevation Dataset, 2002
Boundaries.....Census, IBWC, IBC, USGS, 1972 - 2012
Public Land Survey System.....BLM, 2011

UTM GRID AND 2013 MAGNETIC NORTH
DECLINATION AT CENTER OF SHEET

U.S. National Grid
100,000-m Square ID
DE
DD
Grid Zone Designation
13S

SCALE 1:24 000

1 0.5 0 0.5 1 KILOMETERS
1000 500 0 500 1000 METERS
1 0.5 0 0.5 1 MILES
1000 0 1000 2000 3000 4000 5000 6000 7000 8000 9000 10000 FEET

CONTOUR INTERVAL 40 FEET
NORTH AMERICAN VERTICAL DATUM OF 1988

This map was produced to conform with the
National Geospatial Program US Topo Product Standard, 2011.
A metadata file associated with this product is draft version 0.6.14

COLORADO

QUADRANGLE LOCATION

Central City	Black Hawk	Ralston
Idaho Springs	Squaw Pass	Evergreen
Harris Park	Meridian Hill	Conifer

ROAD CLASSIFICATION

Expressway
Secondary Hwy
Ramp
Interstate Route
US Route
FS Primary Route

Local Connector
Local Road
4WD
US Route
FS Passenger Route
FS High Clearance Route

Check with local Forest Service unit
for current travel conditions and restrictions.

SQUAW PASS, CO
2013