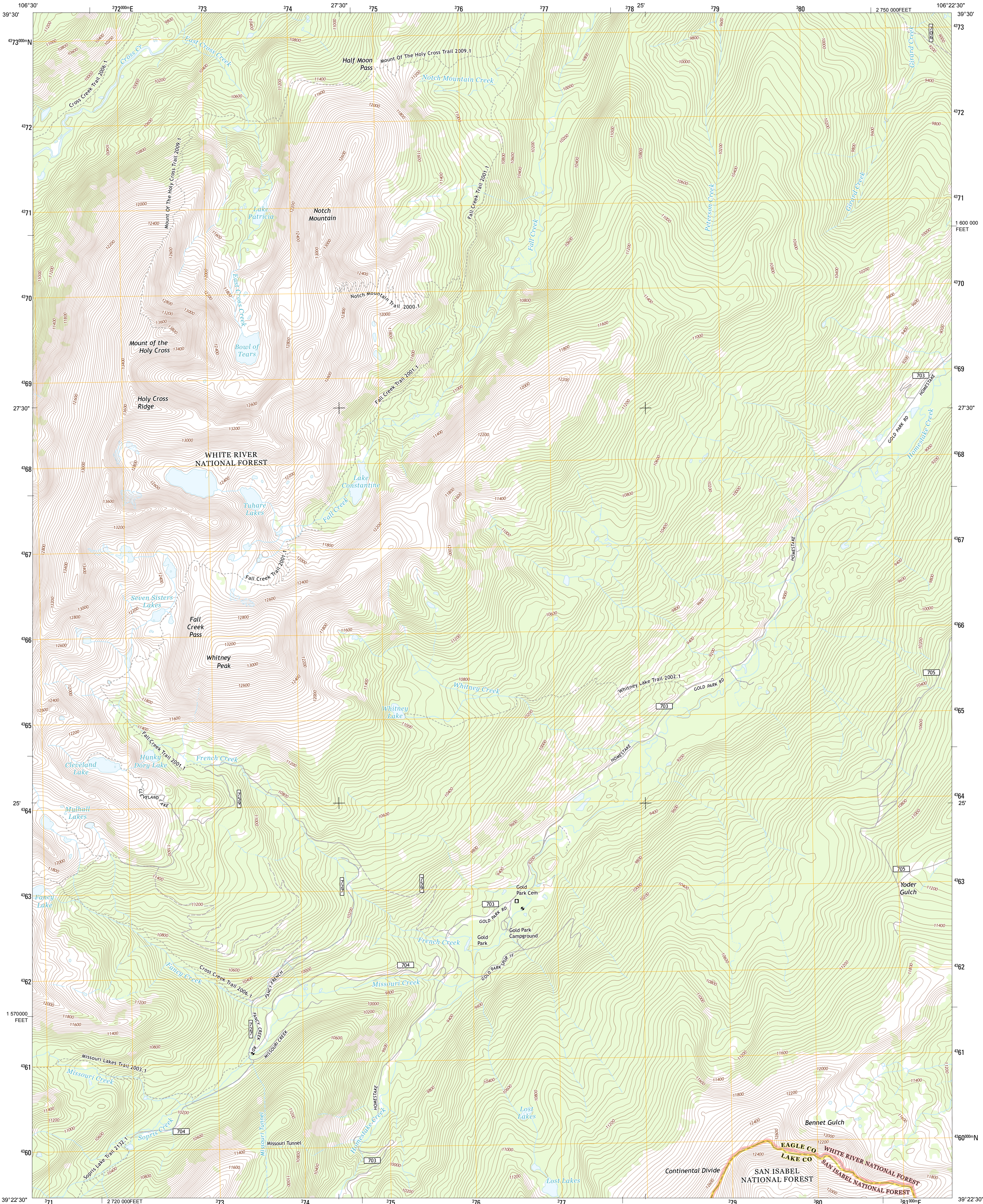




U.S. DEPARTMENT OF THE INTERIOR
U. S. GEOLOGICAL SURVEY

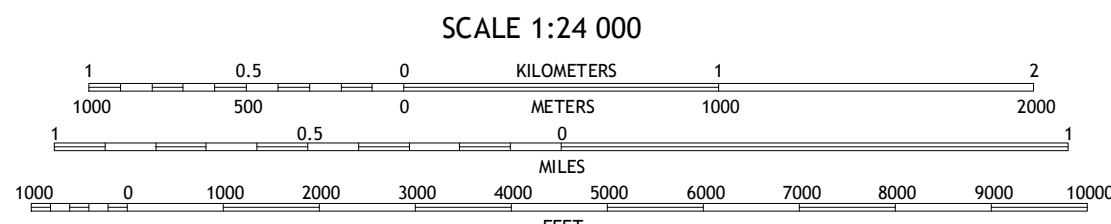
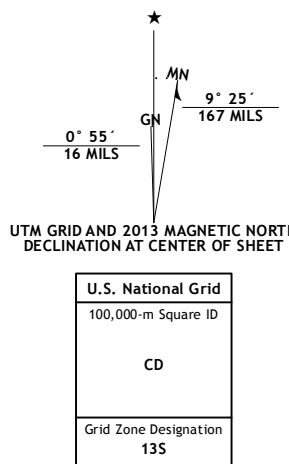


MOUNT OF THE HOLY CROSS QUADRANGLE
COLORADO
7.5-MINUTE SERIES

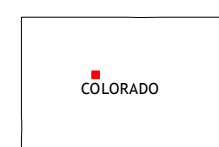


Produced by the United States Geological Survey
North American Datum of 1983 (NAD83)
World Geodetic System of 1984 (WGS84)
1 000-meter grid; Universal Transverse Mercator, Zone 13S
10 000-foot ticks; Colorado Coordinate System of 1983 (central zone)

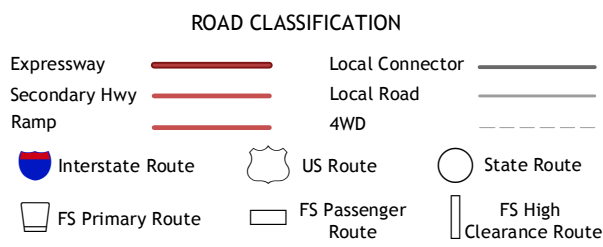
Imagery.....NAIP, September 2011
Roads.....©2006-2012, TomTom
Roads within US Forest Service Land with limited Forest Service updates, 2013
Names.....GNIS, 2013
Hydrography.....National Hydrography Dataset, 2011
Contours.....National Elevation Dataset, 1999
Boundaries.....Census, IBC, USGS, 1972-2012
Public Land Survey System.....BLM, 2011



This map was produced to conform with the
National Geospatial Program US Topo Product Standard, 2011.
A metadata file associated with this product is draft version 0.6.14



Grouse Mountain	Minturn	Red Cliff
Mount Jackson	Mount of the Holy Cross	Pando
Nast	Homestake Reservoir	Leadville North



Check with local Forest Service unit
for current travel conditions and restrictions.

MOUNT OF THE HOLY CROSS, CO
2013