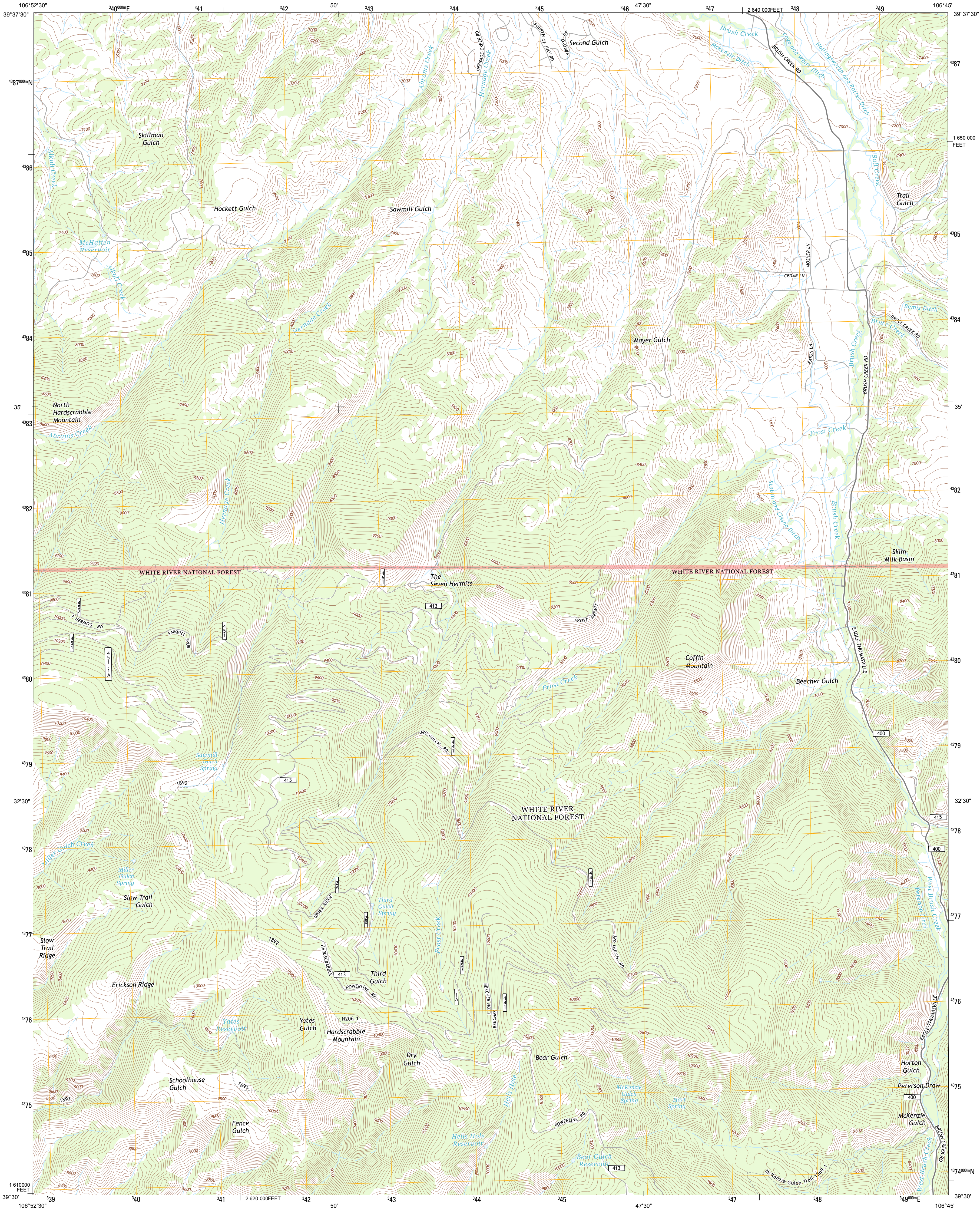




U.S. DEPARTMENT OF THE INTERIOR  
U. S. GEOLOGICAL SURVEY

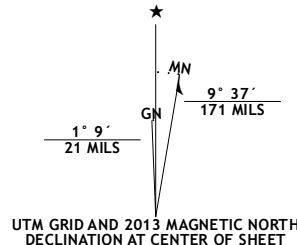


THE SEVEN HERMITS QUADRANGLE  
COLORADO-EAGLE CO.  
7.5-MINUTE SERIES

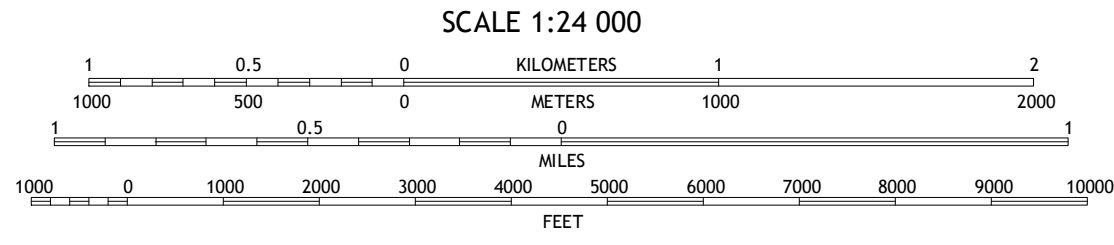


Produced by the United States Geological Survey  
North American Datum of 1983 (NAD83). Projection and  
World Geodetic System of 1984 (WGS84). Projection and  
1 000-meter grid: Universal Transverse Mercator, Zone 13S  
10 000-foot ticks: Colorado Coordinate System of 1983 (central  
zone)

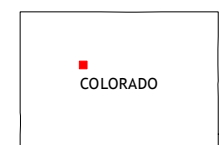
Imagery.....NAIP, August 2011  
Roads.....FSTopo Data  
Roads within US Forest Service Lands.....with limited Forest Service updates, 2013  
Names.....GNIS, 2013  
Hydrography.....National Hydrography Dataset, 2011  
Contours.....National Elevation Dataset, 2004  
Boundaries.....Census, IBWC, IBC, USGS, 1972-2012  
Public Land Survey System.....BLM, 2011



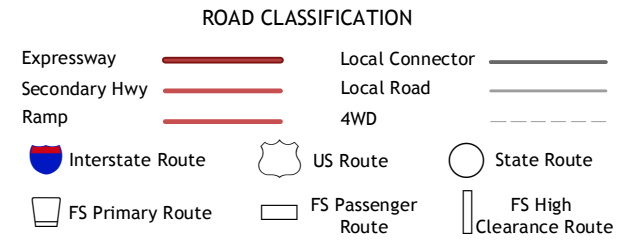
U.S. National Grid
100,000-m Square ID
CD
Grid Zone Designation
13S



This map was produced to conform with the  
National Geospatial Program US Topo Product Standard, 2011.  
A metadata file associated with this product is draft version 0.6.14



Gypsum	Eagle	Walcott
Sulphide Mountain	The Seven Hermits	Fulford
Toner Reservoir	Red Creek	Crooked Creek Pass



Check with local Forest Service unit  
for current travel conditions and restrictions.

THE SEVEN HERMITS, CO  
2013

ADJOINING 7.5 QUADRANGLES