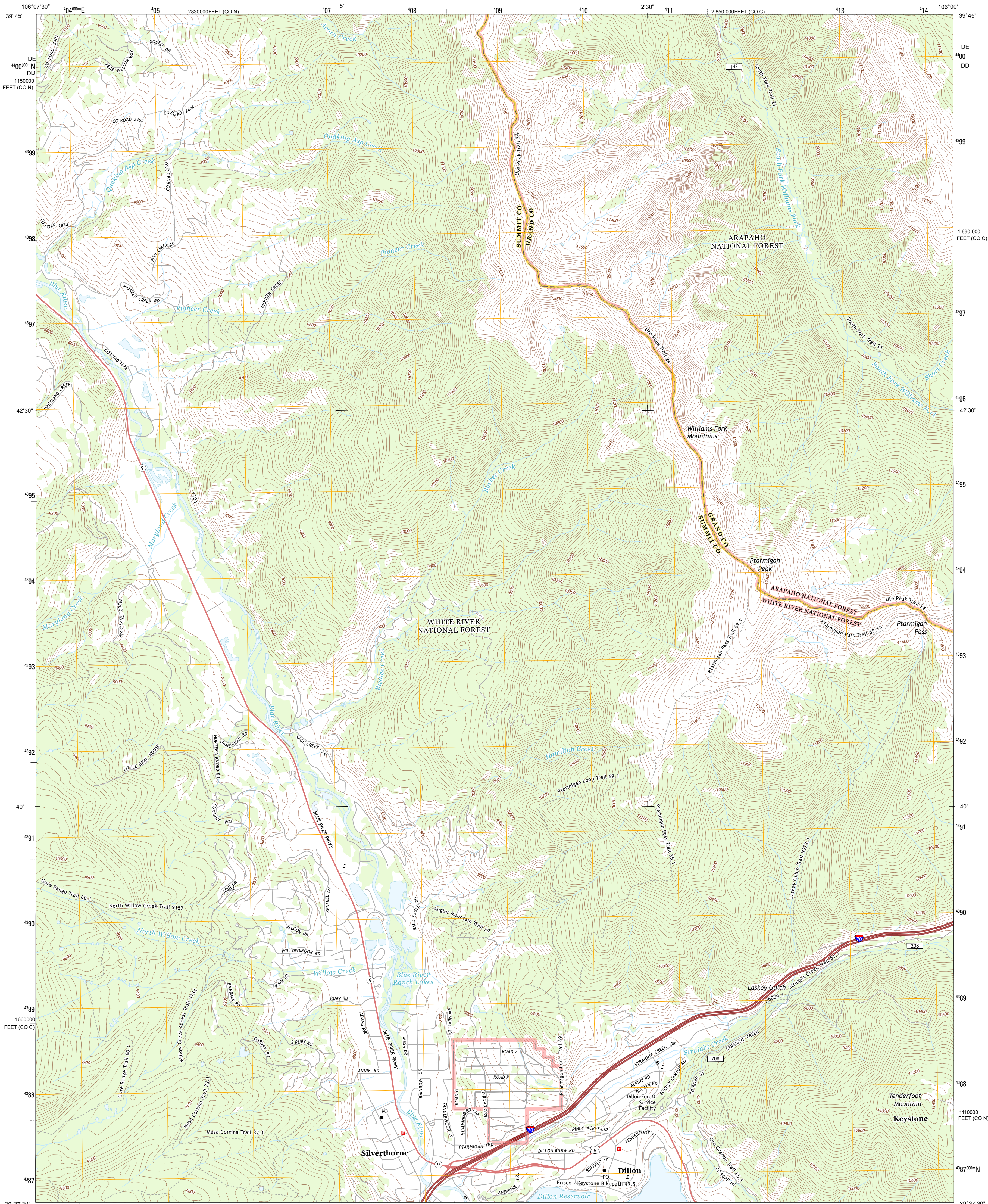




U.S. DEPARTMENT OF THE INTERIOR
U. S. GEOLOGICAL SURVEY

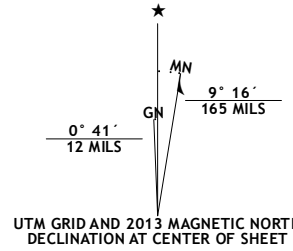


DILLON QUADRANGLE
COLORADO
7.5-MINUTE SERIES

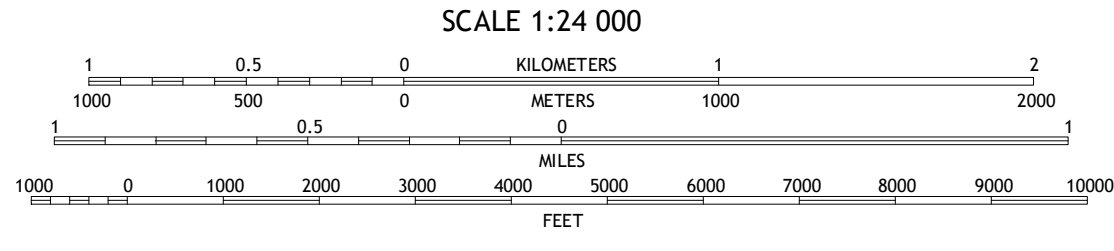


Produced by the United States Geological Survey
North American Datum of 1983 (NAD83)
World Geodetic System of 1984 (WGS84). Projection and
1 000 meter grid: Universal Transverse Mercator, Zone 13S
10 000-foot ticks: Colorado Coordinate System of 1983 (central
and north zones)

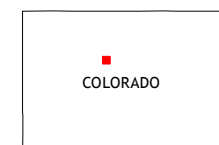
Imagery.....NAIP, August 2011
Roads.....©2006-2012 TomTom
Roads within US Forest Service Lands.....FS Topo Data
with limited Forest Service updates, 2013
Names.....GNIS, 2013
Hydrography.....National Hydrography Dataset, 2011
Contours.....National Elevation Dataset, 1999
Boundaries.....Census, IBWC, IBC, USGS, 1972 - 2012
Public Land Survey System.....BLM, 2011



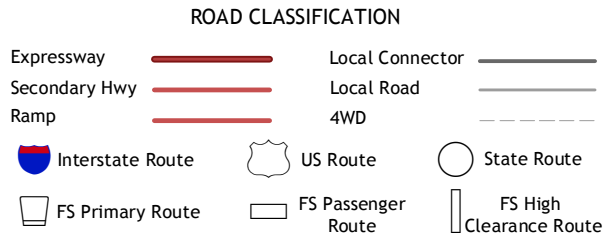
U.S. National Grid	
100,000-m Square ID	
DE	100
DD	00
Grid Zone Designation	
13S	



This map was produced to conform with the
National Geospatial Program US Topo Product Standard, 2011.
A metadata file associated with this product is draft version 0.6.14



Squaw Creek	Ute Peak	Byers Peak
Willow Lakes	Dillon	Loveland Pass
Vail Pass	Frisco	Keystone



Check with local Forest Service unit
for current travel conditions and restrictions.

DILLON, CO
2013

ADJOINING 7.5 QUADRANGLES