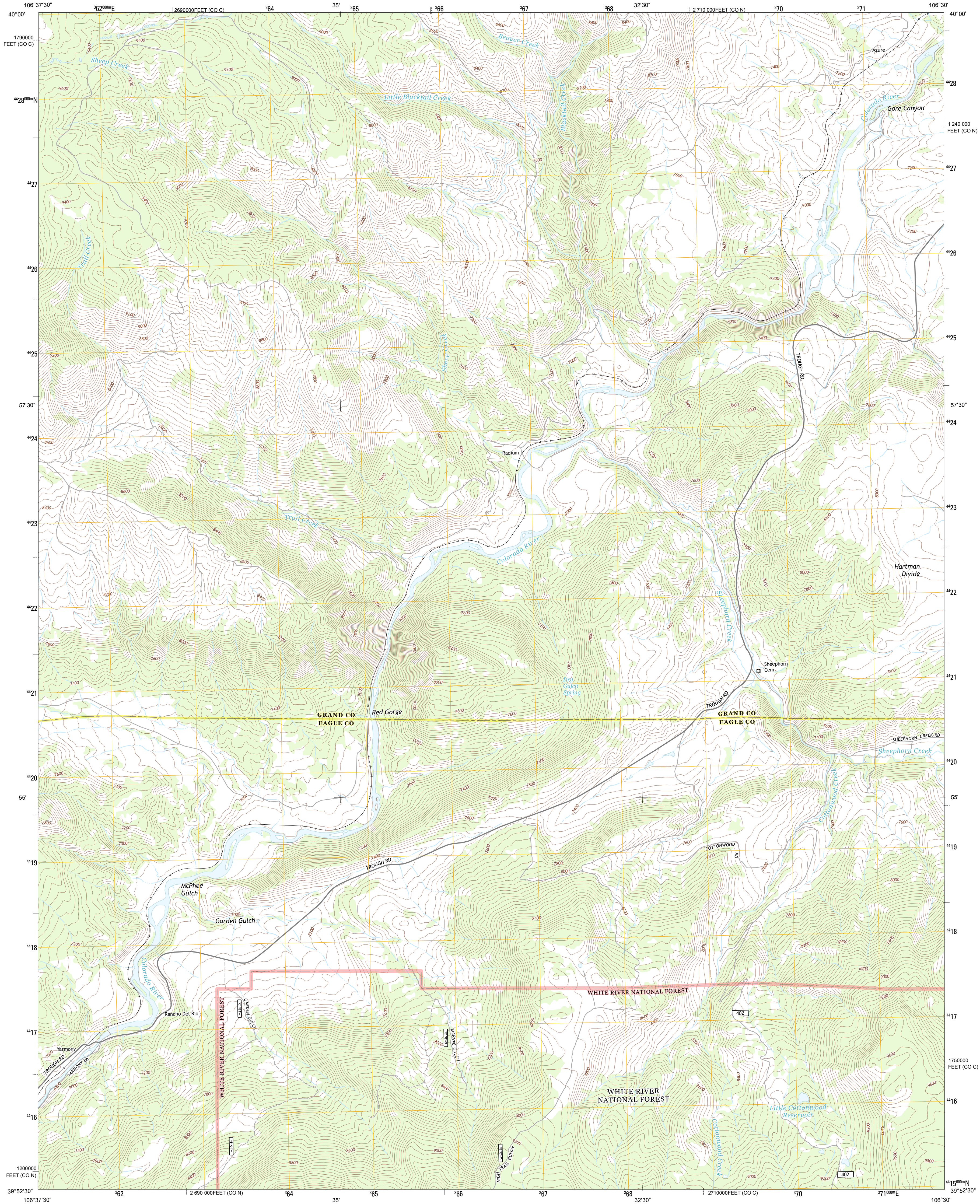




U.S. DEPARTMENT OF THE INTERIOR
U. S. GEOLOGICAL SURVEY

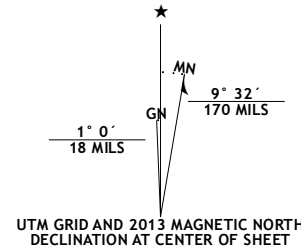


RADIUM QUADRANGLE
COLORADO
7.5-MINUTE SERIES

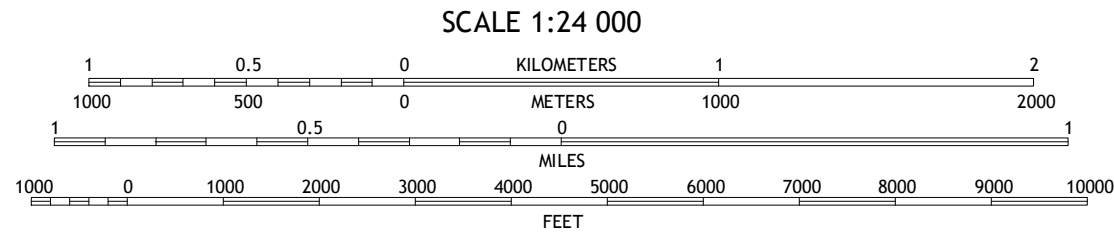


Produced by the United States Geological Survey
North American Datum of 1983 (NAD83). Projection and
1,000-meter grid: Universal Transverse Mercator, Zone 13S
10,000-foot ticks: Colorado Coordinate System of 1983 (north
and central zones)

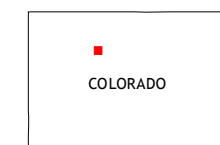
Imagery.....NAIP, July 2011
Roads.....©2006-2012, TomTom
Roads within US Forest Service Lands.....FS Topo Data
with limited Forest Service updates, 2013
Names.....GNIS, 2013
Hydrography.....National Hydrography Dataset, 2011
Contours.....National Elevation Dataset, 2005
Boundaries.....Census, IBWC, IBC, USGS, 1972 - 2012
Public Land Survey System.....BLM, 2011



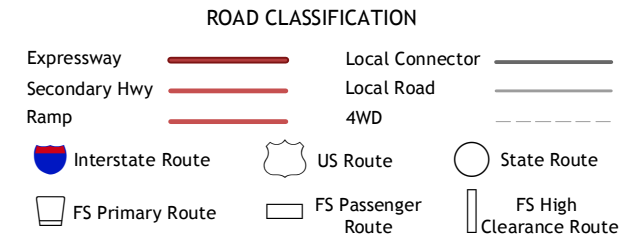
U.S. National Grid
100,000-m Square ID
CE
Grid Zone Designation
13S



CONTOUR INTERVAL 40 FEET
NORTH AMERICAN VERTICAL DATUM OF 1988
This map was produced to conform with the
National Geospatial Program US Topo Product Standard, 2011.
A metadata file associated with this product is draft version 0.6.14



LYNX PASS	GORE PASS	KREMMLING
McCoy	Radium	Sheephorn Mountain
State Bridge	Lava Creek	Piney Peak



Check with local Forest Service unit
for current travel conditions and restrictions.

RADIUM, CO
2013