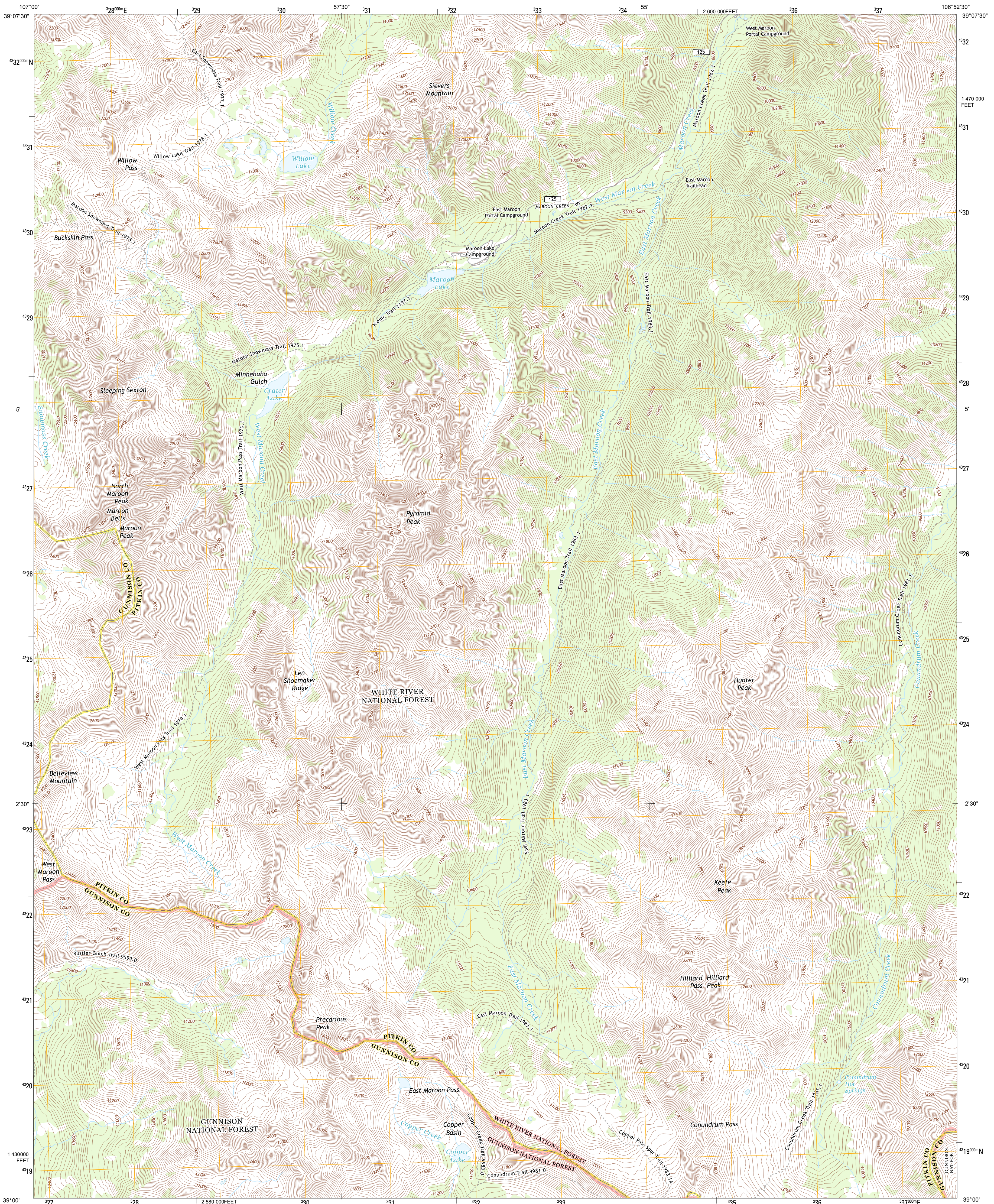




U.S. DEPARTMENT OF THE INTERIOR
U. S. GEOLOGICAL SURVEY

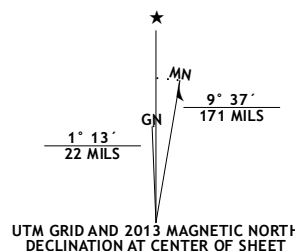


MARON BELLS QUADRANGLE
COLORADO
7.5-MINUTE SERIES

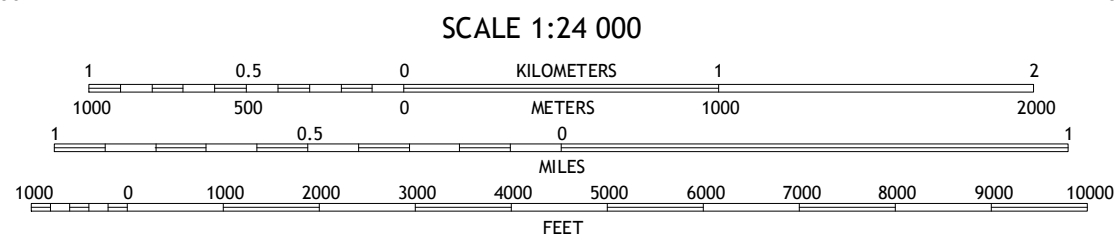


Produced by the United States Geological Survey
North American Datum of 1983 (NAD83)
World Geodetic System of 1984 (WGS84), Projection and
1 000-meter grid: Universal Transverse Mercator, Zone 13S
10 000-foot ticks: Colorado Coordinate System of 1983 (central
zone)

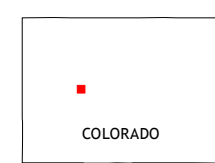
Imagery.....NAIP, August 2011
Roads.....©2006-2012 TomTom
Roads within US Forest Service Lands.....FSData
with limited Forest Service updates, 2013
Names.....GNIS, 2013
Hydrography.....National Hydrography Dataset, 2011
Contours.....National Elevation Dataset, 2004
Boundaries.....Census, IBWC, IBC, USGS, 1972 - 2012
Public Land Survey System.....BLM, 2011



U.S. National Grid
100,000-m Square ID
CD
Grid Zone Designation
13S



CONTOUR INTERVAL 40 FEET
NORTH AMERICAN VERTICAL DATUM OF 1988
This map was produced to conform with the
National Geospatial Program US Topo Product Standard, 2011.
A metadata file associated with this product is draft version 0.6.14



Capitol Peak	Highland Peak	Aspen
Snowmass Mountain	Maroon Bells	Hayden Peak
Oh-be-Joyful	Gothic	Pearl Pass

ROAD CLASSIFICATION			
Expressway	Local Connector	Local Road	4WD
Secondary Hwy	US Route	FS Passenger Route	FS High Clearance Route
Ramp	Interstate Route	FS Primary Route	

Check with local Forest Service unit
for current travel conditions and restrictions.

MARON BELLS, CO
2013

ADJOINING 7.5 QUADRANGLES