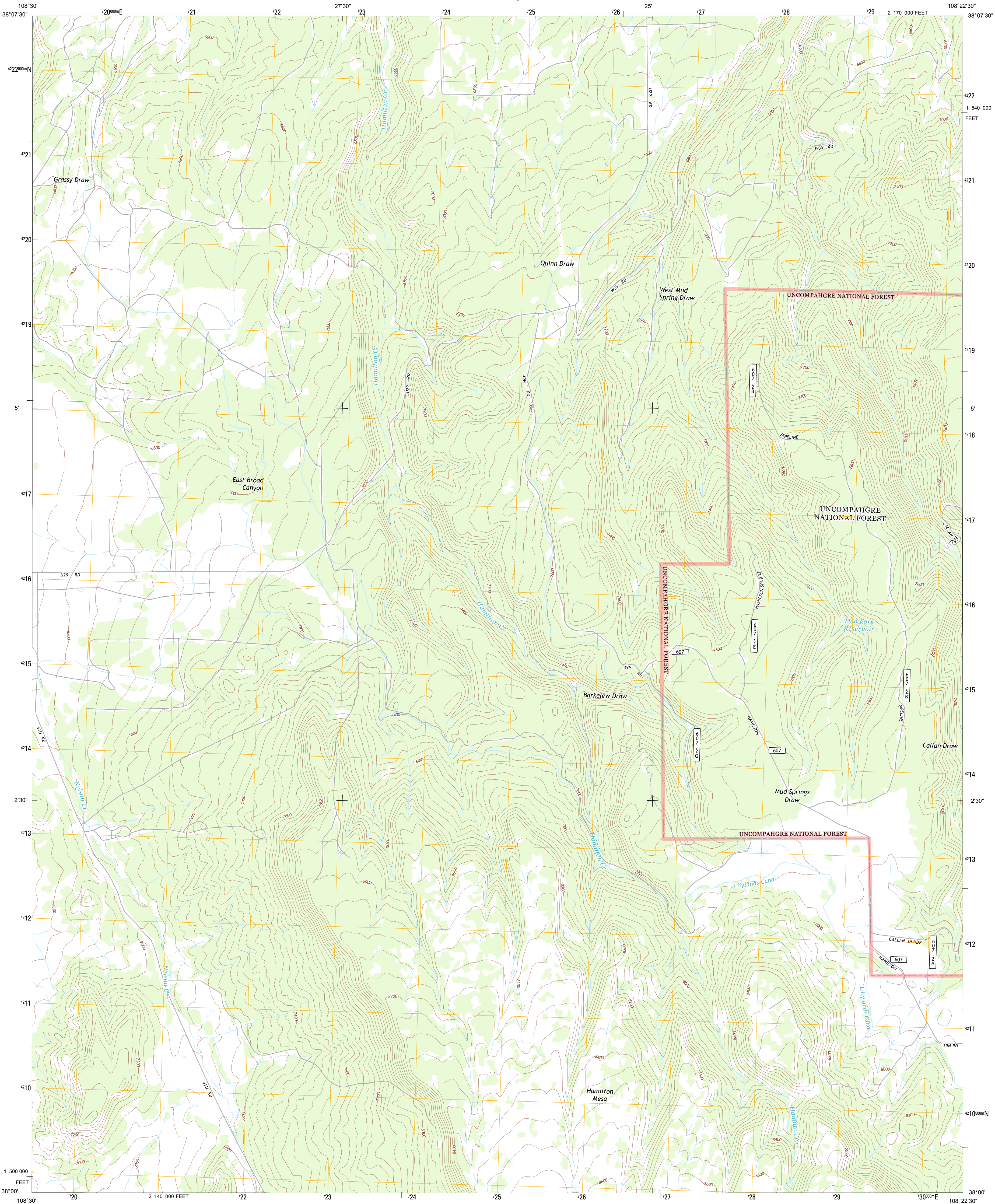




U.S. DEPARTMENT OF THE INTERIOR
U. S. GEOLOGICAL SURVEY



BARKELEW DRAW QUADRANGLE
COLORADO-SAN MIGUEL CO.
7.5-MINUTE SERIES

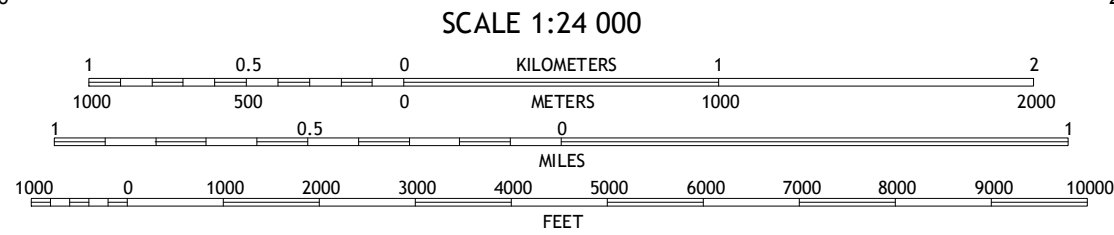


Produced by the United States Geological Survey
North American Datum of 1983 (NAD83)
World Geodetic System of 1984 (WGS84) Projection and
1 000-meter grid; Universal Transverse Mercator, Zone 12S
10 000-foot ticks; Colorado Coordinate System of 1983 (south zone)

Imagery.....NAIP, July 2011
Roads within US Forest Service Lands.....FS Topo Data
with limited Forest Service updates, 2013
Names.....GNIS, 2013
Hydrography.....National Hydrography Dataset, 2011
Contours.....National Elevation Dataset, 2006
Boundaries.....Census, IBC, USGS, 1972 - 2012
Public Land Survey System.....BLM, 2011

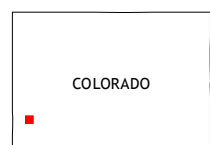
UTM GRID AND 2013 MAGNETIC NORTH
DECLINATION AT CENTER OF SHEET

U.S. National Grid
100,000-m Square ID
YH
Grid Zone Designation
12S



CONTOUR INTERVAL 40 FEET
NORTH AMERICAN VERTICAL DATUM OF 1988

This map was produced to conform with the
National Geospatial Program US Topo Product Standard, 2011.
A metadata file associated with this product is draft version 0.6.14



Naturita	Redvale	Norwood
Basin	Barkelew Draw	Oak Hill
McKenna Peak	North Mountain	Lone Cone

ROAD CLASSIFICATION

Expressway
Secondary Hwy
Ramp

Interstate Route
FS Primary Route

Local Connector
Local Road
4WD

US Route
FS Passenger Route

State Route
FS High Clearance Route

Check with local Forest Service unit
for current travel conditions and restrictions.

BARKELEW DRAW, CO
2013