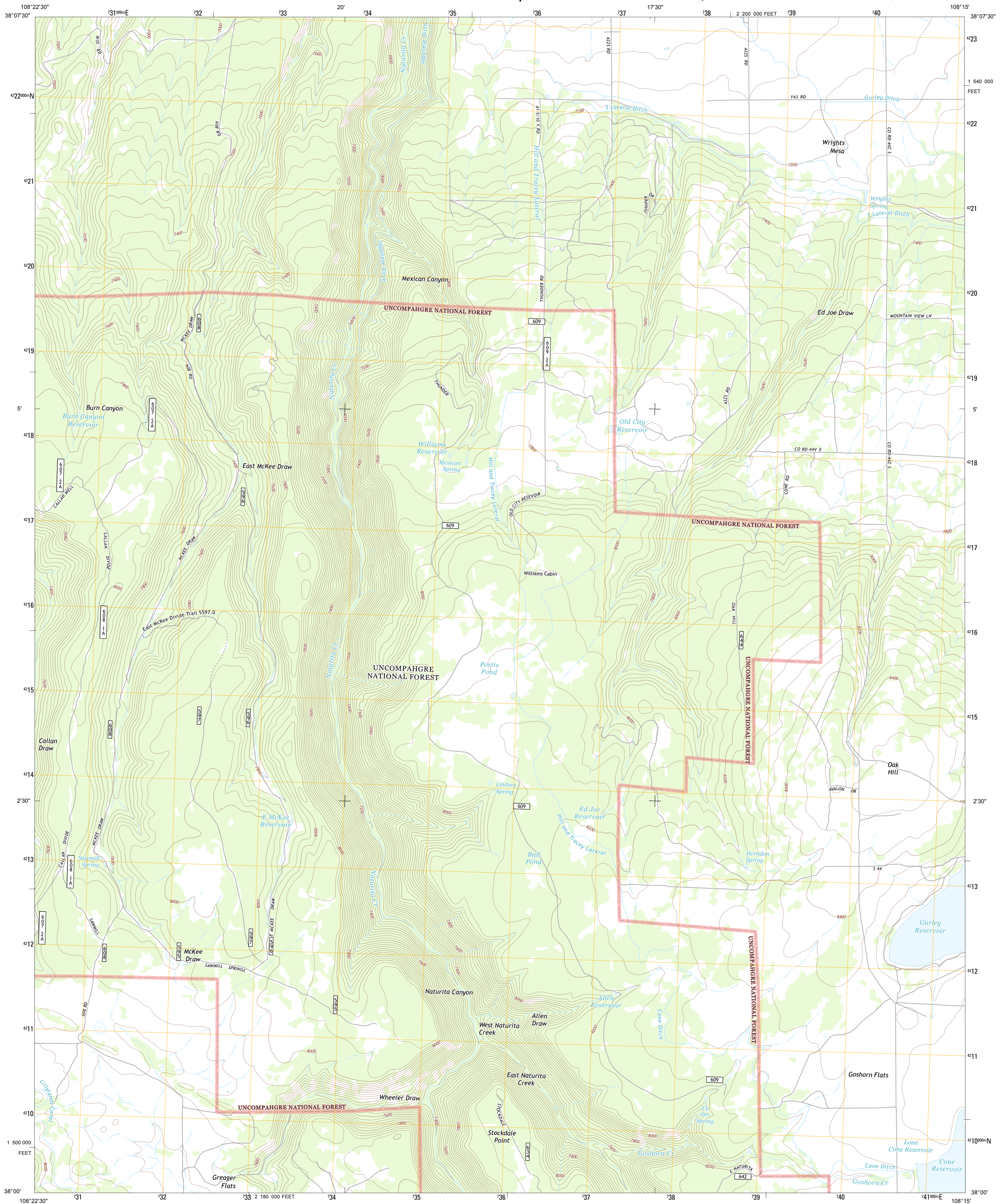




**OAK HILL QUADRANGLE**  
**COLORADO-SAN MIGUEL CO.**  
**7.5-MINUTE SERIES**



UTM GRID AND 2013 MAGNETIC NORTH DECLINATION AT CENTER OF SHEET

Imagery.....	.....NAIP,	July	2011
Roads.....	.....©2006-2012	TomTom	
Roads within US Forest Service Lands.....	.....FSTPO	Data	
	with limited Forest Service updates,	2013	
Names.....	.....GNIS,	2013	
Hydrography.....	.....National Hydrography Dataset,	2011	
Contours.....	.....National Elevation Dataset,	2006	
Boundaries.....	.....Census, IBWC, IBC, USGS, 1972 -	2012	
Public Land Survey System.....	.....BLM,		

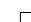
**SCALE 1:24 000**

The graphic scale bar is divided into four units: Kilometers, Meters, Miles, and Feet. The Kilometers scale ranges from 0 to 2, with major ticks every 0.5 km and minor ticks every 0.1 km. The Meters scale ranges from 0 to 2000, with major ticks every 1000 meters and minor ticks every 200 meters. The Miles scale ranges from 0 to 1, with major ticks every 0.5 miles and minor ticks every 0.1 miles. The Feet scale ranges from 0 to 10000, with major ticks every 1000 feet and minor ticks every 200 feet.

Unit	Major Tick	Approximate Distance
Kilometers	0	0 km
	0.5	0.5 km
	1	1 km
Meters	0	0 m
	1000	1000 m
	2000	2000 m
Miles	0	0 miles
	0.5	0.5 miles
	1	1 mile
Feet	0	0 feet
	1000	1000 feet
	10000	10000 feet

CONTOUR INTERVAL 40 FEET  
NORTH AMERICAN VERTICAL DATUM OF 1988

This map was produced to conform with the  
National Geospatial Program US Topo Product Standard, 2011.  
A metadata file associated with this product is draft version 0.6.14



COLORADO

Redvale	Norwood	Sanborn Park
Barkeley Draw	Oak Hill	Gurley Canyon
North Mountain	Lone Cone	Beaver Park

### ROAD CLASSIFICATION

<p>Expressway </p> <p>Secondary Hwy </p> <p>Ramp </p>	<p>Local Connector </p> <p>Local Road </p> <p>4WD </p>
<p> Interstate Route</p> <p> FS Primary Route</p>	<p> US Route</p> <p> FS Passenger Route</p>
<p> State Route</p> <p> FS High Clearance Route</p>	

Check with local Forest Service unit  
for current travel conditions and restrictions

OAK HILL, CO  
2013