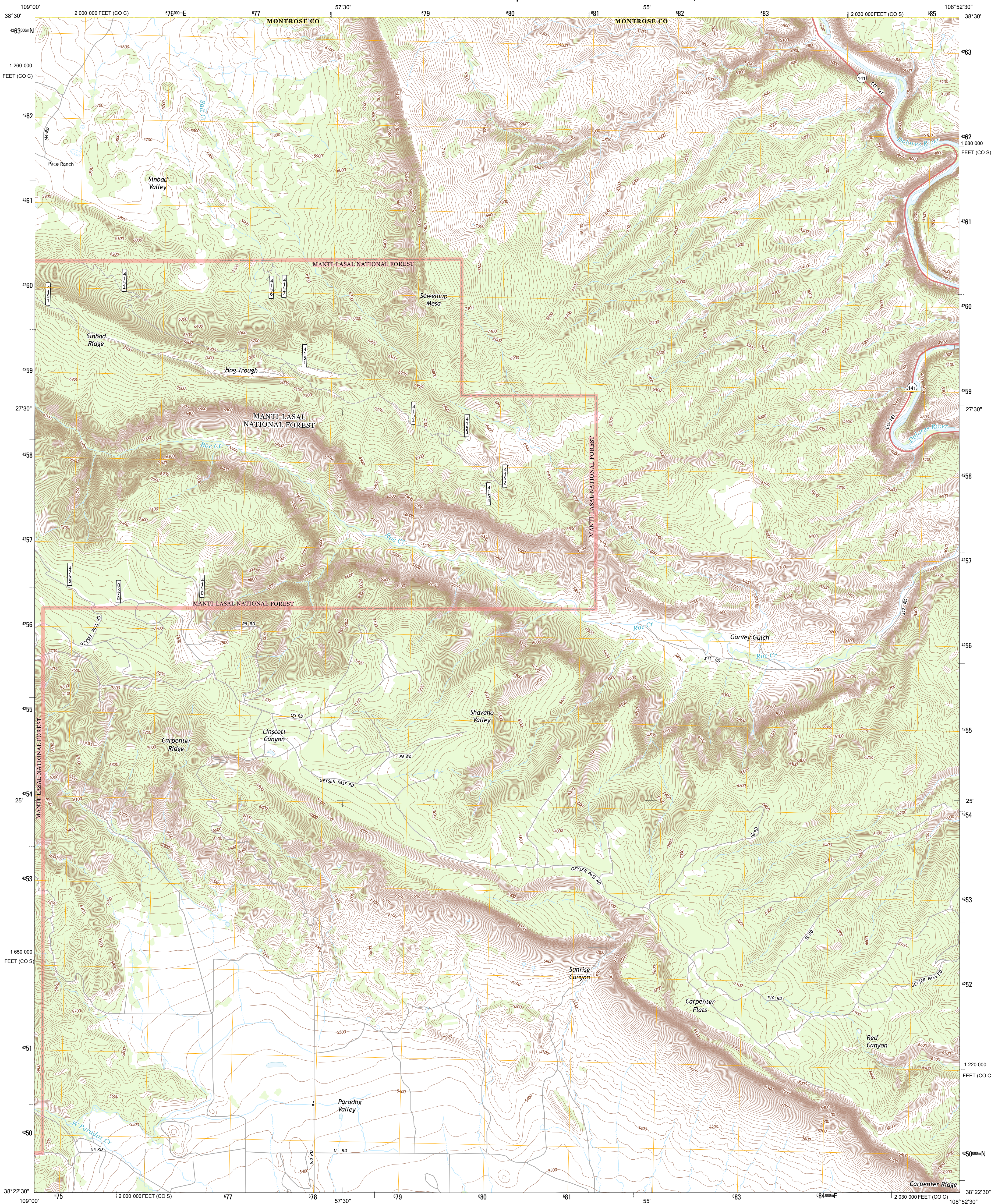




U.S. DEPARTMENT OF THE INTERIOR
U. S. GEOLOGICAL SURVEY

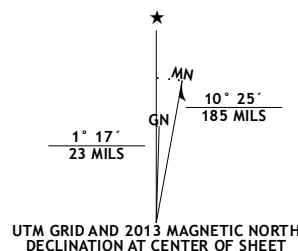


ROC CREEK QUADRANGLE
COLORADO
7.5-MINUTE SERIES

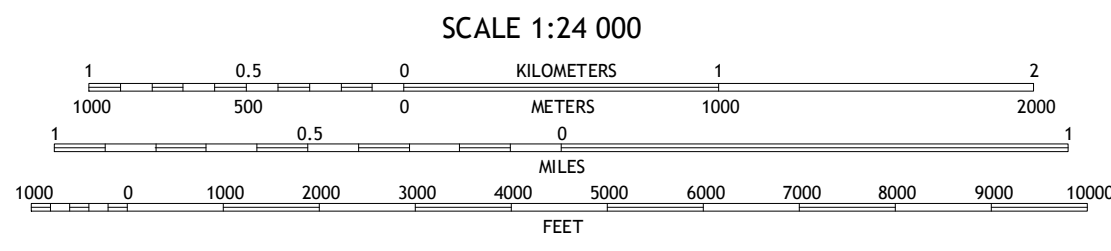


Produced by the United States Geological Survey
North American Datum of 1983 (NAD83)
World Geodetic System of 1984 (WGS84). Projection and
1 000-meter grid: Universal Transverse Mercator, Zone 12S
10 000-foot ticks: Colorado Coordinate System of 1983 (south
and central zones)

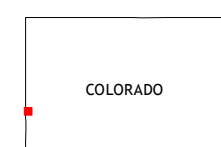
Imagery.....NAIP, July 2011 - September 2011
Roads.....©2006-2012 TomTom
Roads within US Forest Service Lands.....FS Topo Data
with limited Forest Service updates, 2013
Names.....GNIS, 2013
Hydrography.....National Hydrography Dataset, 2011
Contours.....National Elevation Dataset, 2004
Boundaries.....Census, IBWC, IBC, USGS, 1972 - 2012
Public Land Survey System.....BLM, 2011



U.S. National Grid
100,000-m Square ID
XH
Grid Zone Designation
12S



CONTOUR INTERVAL 20 FEET
NORTH AMERICAN VERTICAL DATUM OF 1988
This map was produced to conform with the
National Geospatial Program US Topo Product Standard, 2011.
A metadata file associated with this product is draft version 0.6.14



Dolores Point South	Juanta Arch	Calamity Mesa
Buckeye Reservoir	Roc Creek	Red Canyon
Ray Mesa	Paradox	Davis Mesa

ADJOINING 7.5' QUADRANGLES

ROAD CLASSIFICATION			
Expressway	Local Connector	Local Road	4WD
Secondary Hwy	US Route	FS Passenger Route	FS High Clearance Route
Ramp	Interstate Route	State Route	

Check with local Forest Service unit
for current travel conditions and restrictions.

ROC CREEK, CO
2013