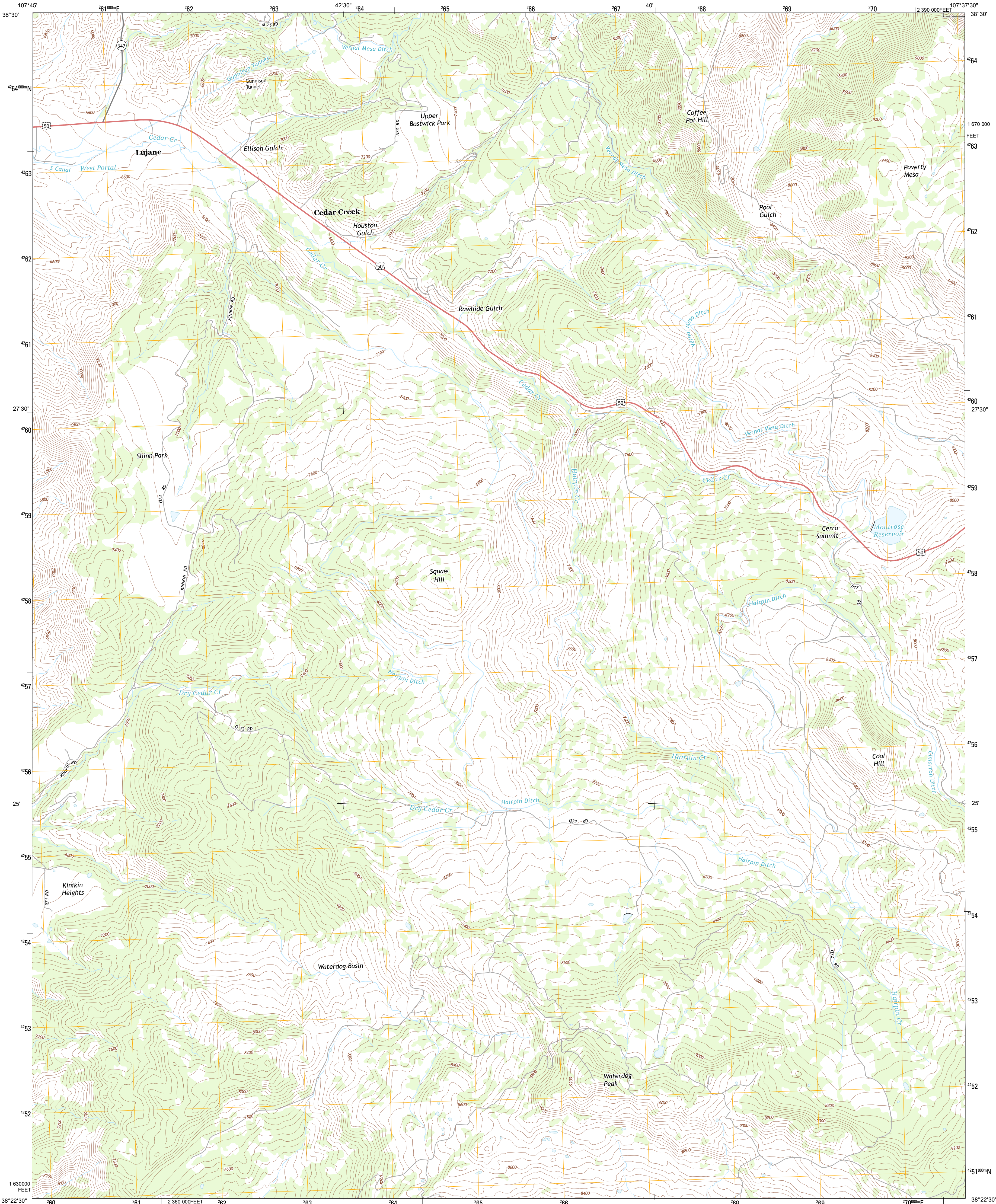




U.S. DEPARTMENT OF THE INTERIOR  
U. S. GEOLOGICAL SURVEY

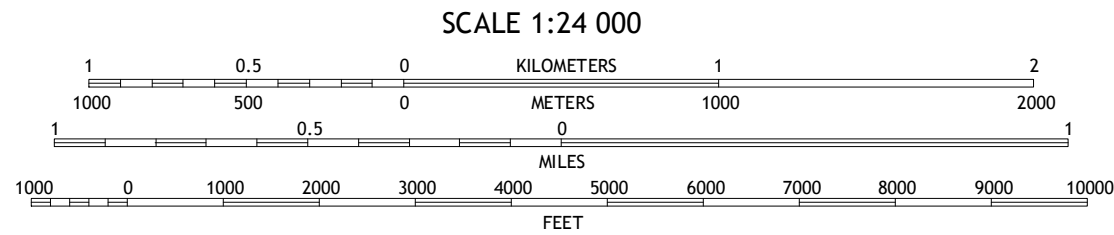
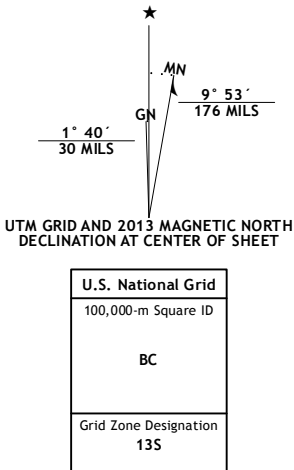


CERRO SUMMIT QUADRANGLE  
COLORADO-MONTROSE CO.  
7.5-MINUTE SERIES

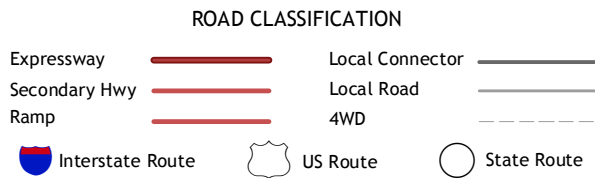
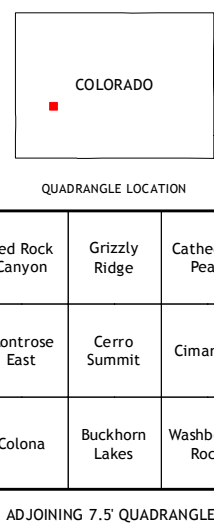


Produced by the United States Geological Survey  
North American Datum of 1983 (NAD83)  
World Geodetic System of 1984 (WGS84). Projection and  
1 000-meter grid: Universal Transverse Mercator, Zone 13S  
10 000-foot ticks: Colorado Coordinate System of 1983 (south  
zone)

Imagery.....NAIP, July 2009 - August 2011  
Roads.....©2006-2012 TomTom  
Names.....GNIS, 2013  
Hydrography.....National Hydrography Dataset, 2011  
Contours.....National Elevation Dataset, 2003  
Boundaries, IBWC, IBC, USGS, 1972 - 2012  
Public Land Survey System.....BLM, 2011



This map was produced to conform with the  
National Geospatial Program US Topo Product Standard, 2011.  
A metadata file associated with this product is draft version 0.6.14



CERRO SUMMIT, CO  
2013