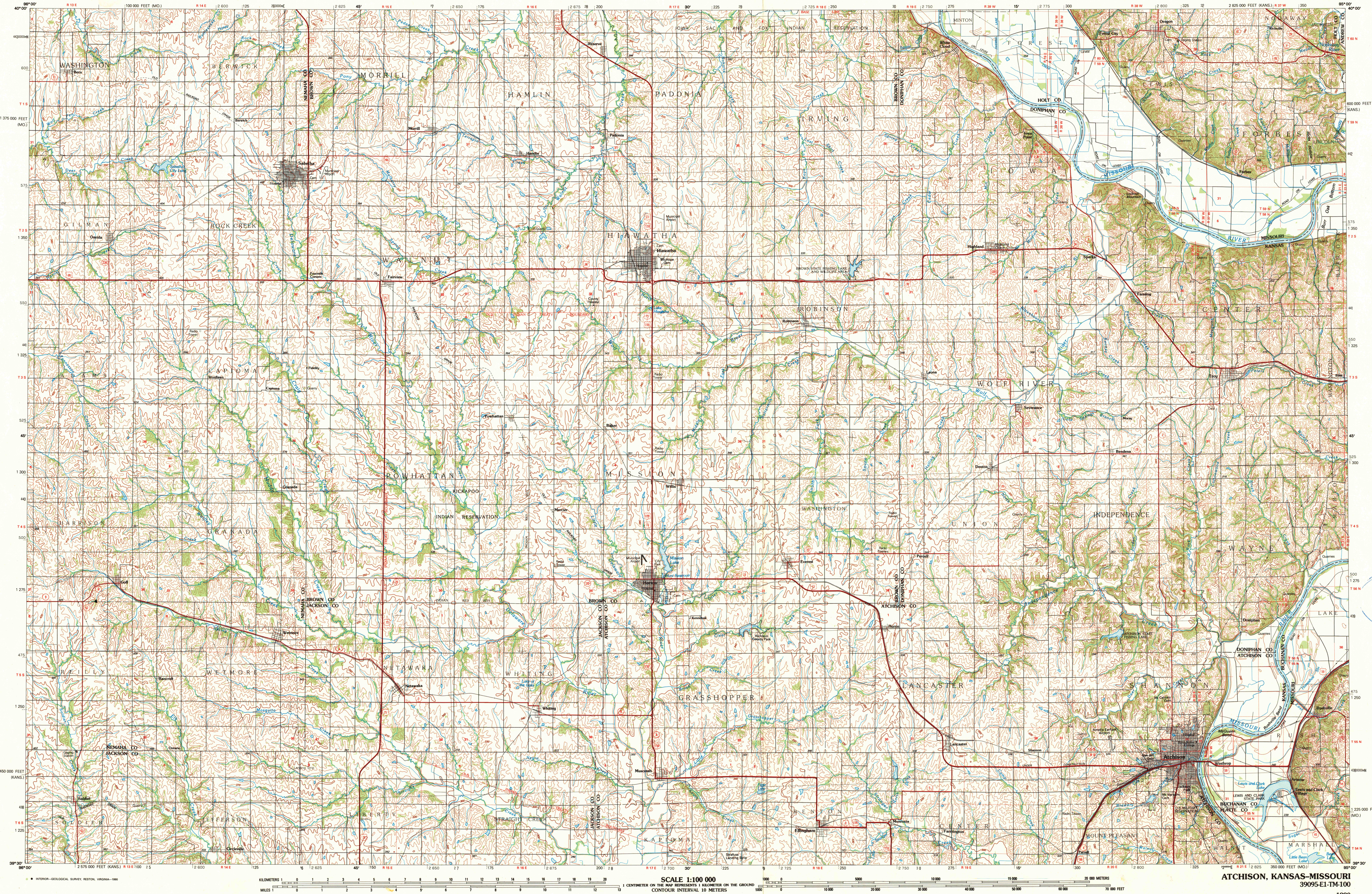
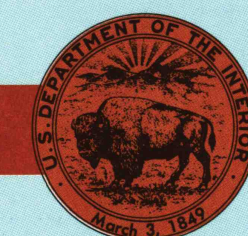


## ATCHISON, KANSAS-MISSOURI

30 X 60 MINUTE SERIES (TOPOGRAPHIC)

Atchison  
KANSAS-MISSOURI1:100 000-scale metric  
topographic map30 X 60 MINUTE QUADRANGLE  
SHOWING

- Contours and elevations in meters
- Highways, roads and other manmade structures
- Water features
- Woodland areas
- Geographic names



GEOLOGICAL SURVEY

1990

Produced by the United States Geological Survey

Compiled from USGS 1:24 000-scale topographic maps dated 1959-1984. Planimetry revised from aerial photographs taken 1985 and other source data. Revised information not field checked. Map edited 1990

Projection and 10 000-meter grid, zone 15,

Universal Transverse Mercator

25 000-foot grid ticks based on Kansas coordinate

system, west zone

1927 North American Datum

To place on the predicted North American Datum 1983, move

the projection lines 3 meters north and 22 meters east

There may be private inholdings within the boundaries of the

National or State reservations shown on this map

CONTOUR INTERVAL 10 METERS

NATIONAL GEODETIC VERTICAL DATUM OF 1929

ELEVATIONS SHOWN TO THE NEAREST METER

THIS MAP COMPLIES WITH NATIONAL MAP ACCURACY STANDARDS

CONVERSION TABLE		DECLINATION DIAGRAM		ADJOINING MAPS		
Meters	Feet			1	2	3
1	3.2808			4	5	
2	6.5617			6	7	8
3	9.8425					
4	13.1234					
5	16.4042					
6	19.6850					
7	22.9659					
8	26.2467					
9	29.5276					
10	32.8084					

To convert meters to feet multiply by 3.2808

To convert feet to meters multiply by 0.3048

UTM grid convergences (GNI) and 1960 magnetic declination (MD) at center of map

Diagram is approximate

FOR SALE BY U.S. GEOLOGICAL SURVEY  
DENVER, COLORADO 80225, OR RESTON, VIRGINIA 22092

USGS 1:100 000 HISTORICAL MAP

MAR 27 1991

REC'D FILE COPY

## Topographic Map Symbols

Primary highway, hard surface	—————
Secondary highway, hard surface	—————
Light duty road, principal street, hard or improved surface	—————
Other road or street, trail	—————
Route marker, interstate, U.S., State	—————
Railroad: standard gauge, narrow gauge	—————
Bridge, overpass, underpass	—————
Tunnel: road, railroad	—————
Built up area, locality, elevation	—————
Airport: landing field, landing strip	—————
National boundary	—————
State boundary	—————
County boundary	—————
National or State reservation boundary	—————
Land grant boundary	—————
U.S. public lands survey: range, township, section	—————
Range, township, section line: projected	—————
Power transmission line: pipeline	—————
Dam; dam with lock	—————
Cemetery; building	—————
Windsail; water well; spring	—————
Mine shaft; adit or cave; mine, quarry, gravel pit	—————
Campground; picnic area; U.S. location monument	—————
Ruins; cliff dwelling	—————
Distorted surface: strip mine, lava, sand	—————
Contours: index, intermediate, supplementary	—————
Bathymetric contours: index, intermediate	—————
Stream, lake, perennial, intermittent	—————
Rapids, large and small; falls, large and small	—————
Area to be submerged; marsh, swamp	—————
Land subject to controlled inundation; woodland	—————
Sarab; mangrove	—————
Orchard; vineyard	—————

A pamphlet describing topographic maps is available on request

ATCHISON, KANSAS-MISSOURI

39095-E1-TM-100

1990