

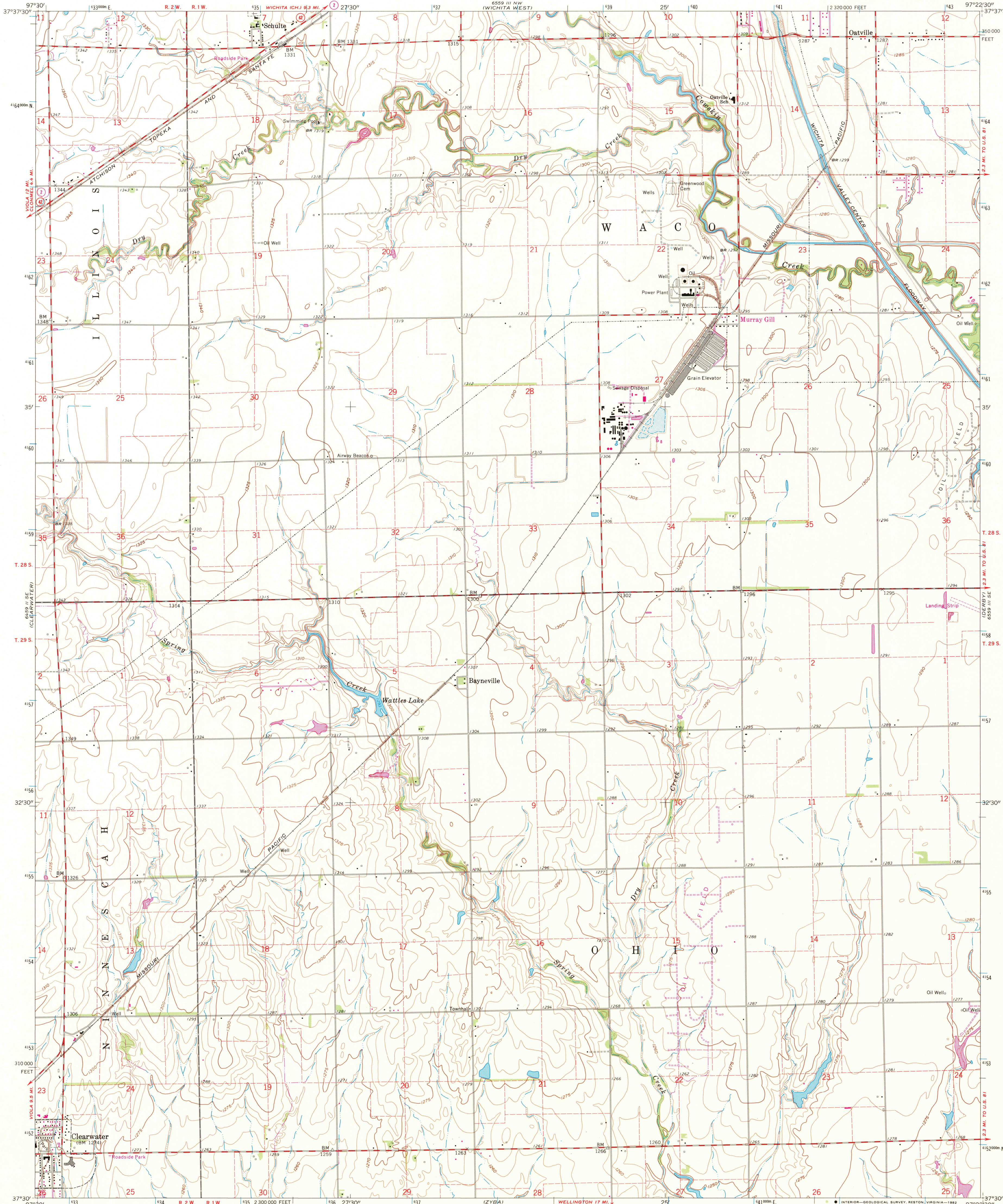
6559 III NE
(GODDARD)

UNITED STATES
DEPARTMENT OF THE INTERIOR
GEOLOGICAL SURVEY

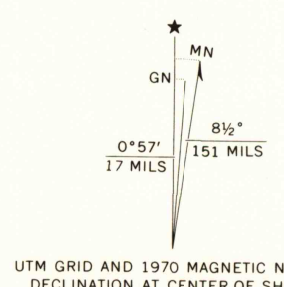
STATE OF KANSAS

BAYNEVILLE QUADRANGLE
KANSAS—SEDGWICK CO.
7.5 MINUTE SERIES (TOPOGRAPHIC)

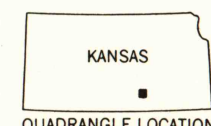
6559 III NE
(WICHITA EAST)



Mapped, edited, and published by the Geological Survey
in cooperation with State of Kansas agencies
Control by USGS and USC&GS
Topography by planetable surveys 1940
Revised from aerial photographs taken 1960. Field check 1961
Polyconic projection. 1927 North American datum
10,000-foot grid based on Kansas coordinate system, south zone
1000-meter Universal Transverse Mercator grid ticks,
zone 14, shown in blue
To place on the predicted North American Datum 1983
move the projection lines 28 meters east as shown by
dashed corner ticks
Revisions shown in purple compiled from aerial photographs
taken 1970. This information not field checked
Map photoinspected 1981
No major culture or drainage changes observed



THIS MAP COMPLIES WITH NATIONAL MAP ACCURACY STANDARDS
FOR SALE BY U. S. GEOLOGICAL SURVEY, DENVER, COLORADO 80225, OR RESTON, VIRGINIA 22092
AND STATE GEOLOGICAL SURVEY, LAWRENCE, KANSAS 66044
A FOLDER DESCRIBING TOPOGRAPHIC MAPS AND SYMBOLS IS AVAILABLE ON REQUEST



ROAD CLASSIFICATION
Medium-duty ——— Light-duty ———
Unimproved dirt ———
State Route

BAYNEVILLE, KANS.
N 3730—W 9722.5/7.5

1961

PHOTOREVISED 1970
PHOTOINSPECTED 1981
AMS 6559 III SW—SERIES V878

JAN 13 1983
FILE PLANE

2390