

6658 II NE  
(CAMEL)

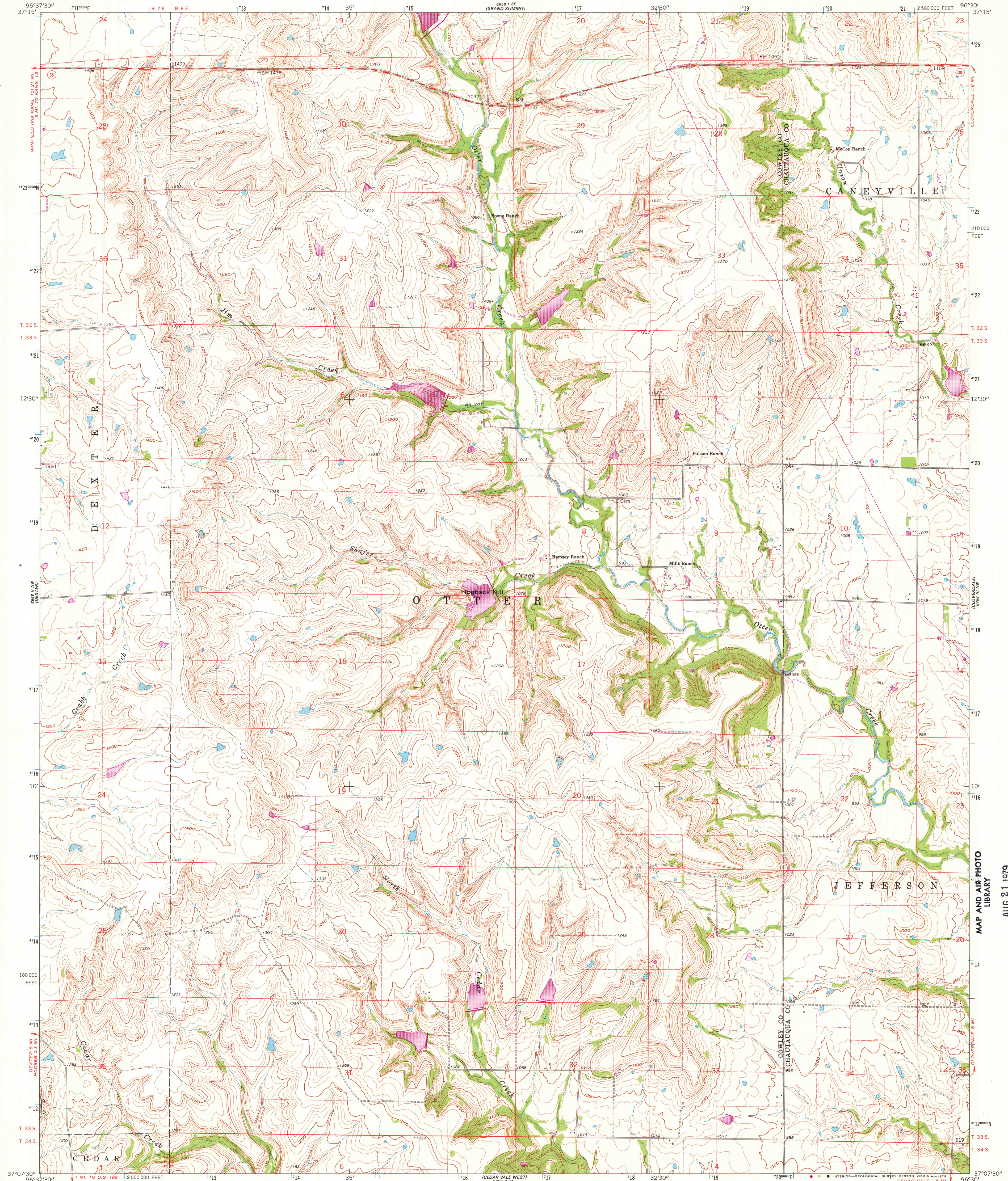
UNITED STATES  
DEPARTMENT OF THE INTERIOR  
GEOLOGICAL SURVEY



STATE OF KANSAS

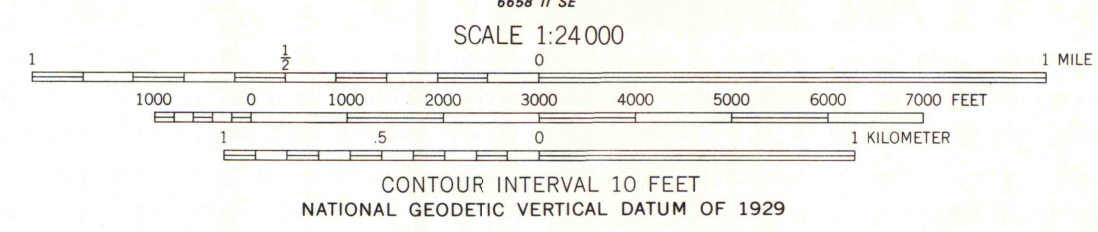
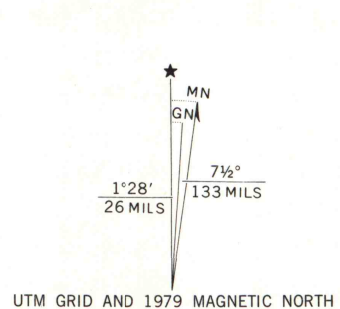
DEXTER NE QUADRANGLE  
KANSAS  
7.5 MINUTE SERIES (TOPOGRAPHIC)

678 IV SW  
(ORANGE)

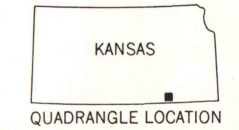


DEXTER SW  
6658 SW

Mapped, edited, and published by the Geological Survey  
in cooperation with State of Kansas agencies  
Control by USGS and USC&GS  
Topography by photogrammetric methods from aerial  
photographs taken 1960. Field checked 1962  
Polyconic projection. 1927 North American datum  
10,000-foot grid based on Kansas coordinate system, south zone  
1000-meter Universal Transverse Mercator grid ticks,  
zone 14, shown in blue  
Fine red dashed lines indicate selected fence and field lines where  
generally visible on aerial photographs. This information is unchecked  
Revisions shown in purple compiled from aerial photographs  
taken 1976 and other source data. This information not  
field checked. Map edited 1979



THIS MAP COMPLIES WITH NATIONAL MAP ACCURACY STANDARDS  
FOR SALE BY U. S. GEOLOGICAL SURVEY, DENVER, COLORADO 80225, OR RESTON, VIRGINIA 22092  
AND STATE GEOLOGICAL SURVEY, LAWRENCE, KANSAS 66044  
A FOLDER DESCRIBING TOPOGRAPHIC MAPS AND SYMBOLS IS AVAILABLE ON REQUEST



ROAD CLASSIFICATION  
Medium-duty Light-duty  
Unimproved dirt  
State Route

DEXTER NE, KANS.  
N3707.5-W9630/7.5  
1962  
PHOTOREVISED 1979  
AMS 6658 II NE - SERIES V878

MAP AND AIR PHOTO  
LIBRARY

AUG 21 1979

University of Wisconsin