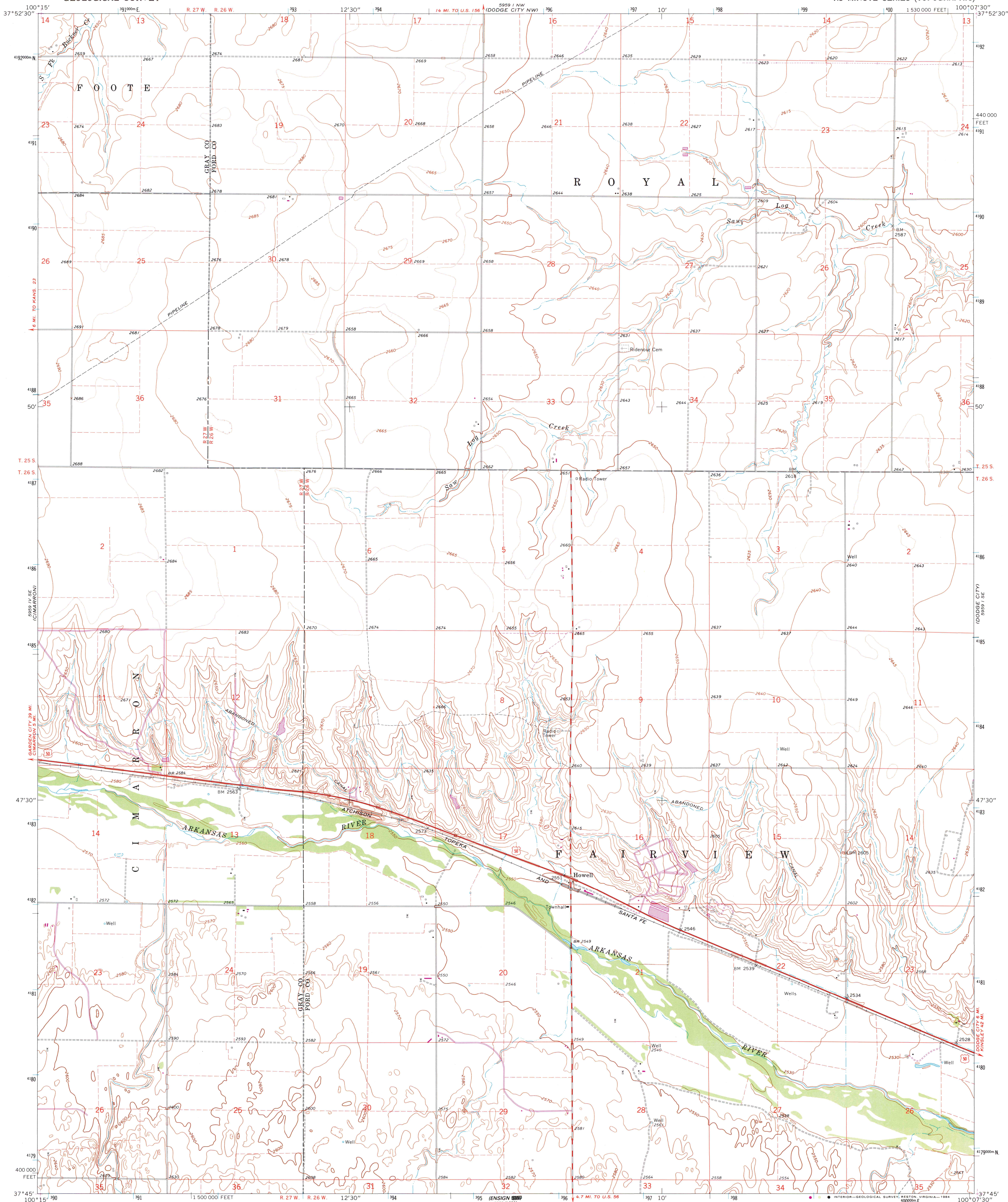


5959 IV SE  
(CIMARRON NE)

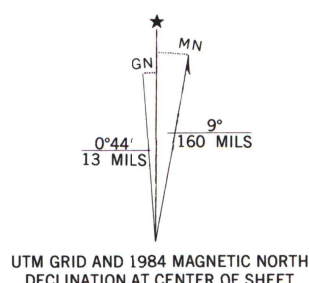
UNITED STATES  
DEPARTMENT OF THE INTERIOR  
GEOLOGICAL SURVEY

DODGE CITY SW QUADRANGLE  
KANSAS  
7.5 MINUTE SERIES (TOPOGRAPHIC)

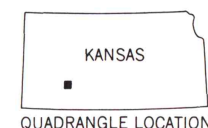
5959 I NE  
(DODGE CITY NE)



Mapped, edited, and published by the Geological Survey  
Control by USGS and USC&GS  
Topography by photogrammetric methods from aerial  
photographs taken 1965. Field checked 1968  
Polyconic projection. 1927 North American datum  
10,000-foot grid based on Kansas coordinate system, south zone  
1000-meter Universal Transverse Mercator grid ticks,  
zone 14, shown in blue  
Fine red dashed lines indicate selected fence and field lines where  
generally visible on aerial photographs. This information is unchecked  
To place on the predicted North American Datum 1983,  
move the projection lines 1 meter north and  
35 meters east as shown by dashed corner ticks  
Revisions shown in purple compiled from aerial photographs taken 1982 and  
other sources. This information not field checked. Map edited 1984



THIS MAP COMPLIES WITH NATIONAL MAP ACCURACY STANDARDS  
FOR SALE BY U. S. GEOLOGICAL SURVEY, DENVER, COLORADO 80225, OR RESTON, VIRGINIA 22092  
AND KANSAS GEOLOGICAL SURVEY, LAWRENCE, KANSAS 66044  
A FOLDER DESCRIBING TOPOGRAPHIC MAPS AND SYMBOLS IS AVAILABLE ON REQUEST



ROAD CLASSIFICATION  
Heavy-duty ——— Light-duty ———  
Medium-duty ——— Unimproved dirt ———  
U. S. Route

DODGE CITY SW, KANS.  
N3745—W10007.5/7.5

1968  
PHOTOREVISED 1984  
DMA 5959 I SW—SERIES V878

U. S. Regional  
Depository Copy  
A. H. ROBINSON  
MAP LIBRARY  
DEC 11 1984  
University of Wisconsin  
Madison