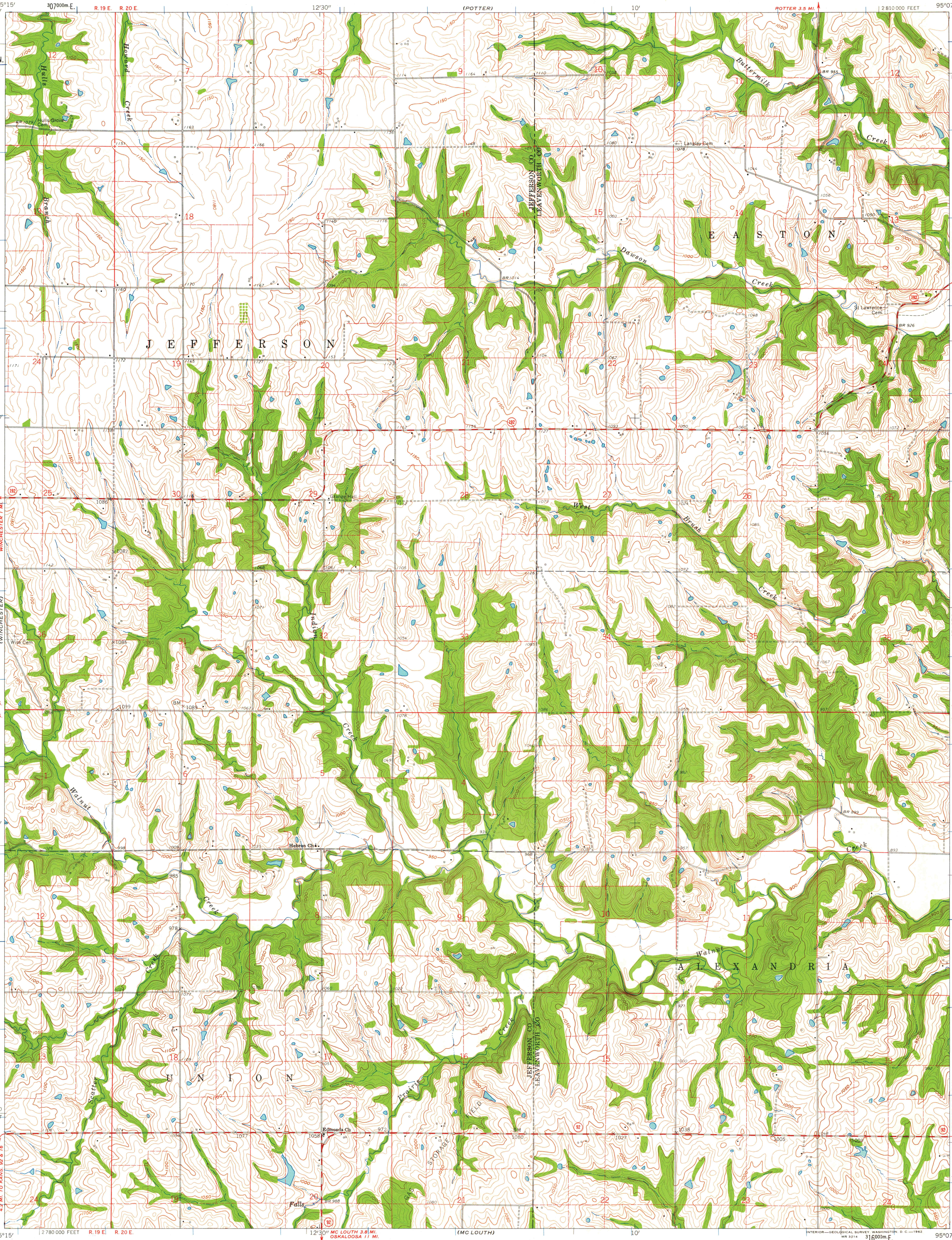


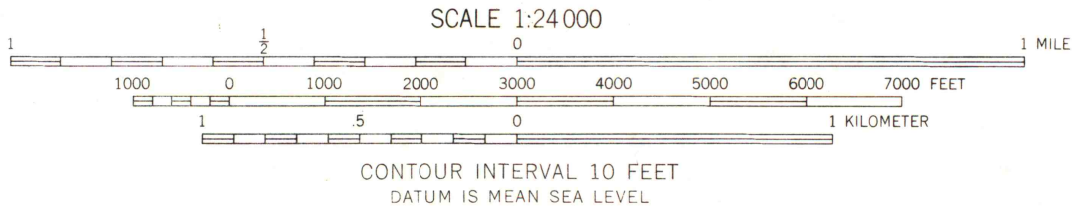
UNITED STATES
DEPARTMENT OF THE INTERIOR
GEOLOGICAL SURVEY

EASTON SW QUADRANGLE
KANSAS
7.5 MINUTE SERIES (TOPOGRAPHIC)



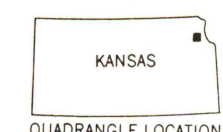
Maped, edited, and published by the Geological Survey
Control by USGS and USC&GS
Topography by photogrammetric methods from aerial
photographs taken 1957. Field checked 1961
Polyconic projection. 1927 North American datum
10,000-foot grid based on Kansas coordinate system, north zone
1000-meter Universal Transverse Mercator grid ticks,
zone 15, shown in blue
Fine red dashed lines indicate selected fence and field lines where
generally visible on aerial photographs. This information is unchecked

TRUE NORTH
MAGNETIC NORTH
APPROXIMATE MEAN
DECLINATION, 1961



ROAD CLASSIFICATION
Medium-duty ——— Light-duty ———
Unimproved dirt = = = = =
State Route

THIS MAP COMPLIES WITH NATIONAL MAP ACCURACY STANDARDS
FOR SALE BY U.S. GEOLOGICAL SURVEY, DENVER 25, COLORADO OR WASHINGTON 25, D. C.
AND BY THE STATE GEOLOGICAL SURVEY, LAWRENCE, KANSAS
A FOLDER DESCRIBING TOPOGRAPHIC MAPS AND SYMBOLS IS AVAILABLE ON REQUEST



EASTON SW, KANS.
N 5915—W 9507.5/7.5

MAP AND AIR PHOTO LIBRARY
University of Wisconsin