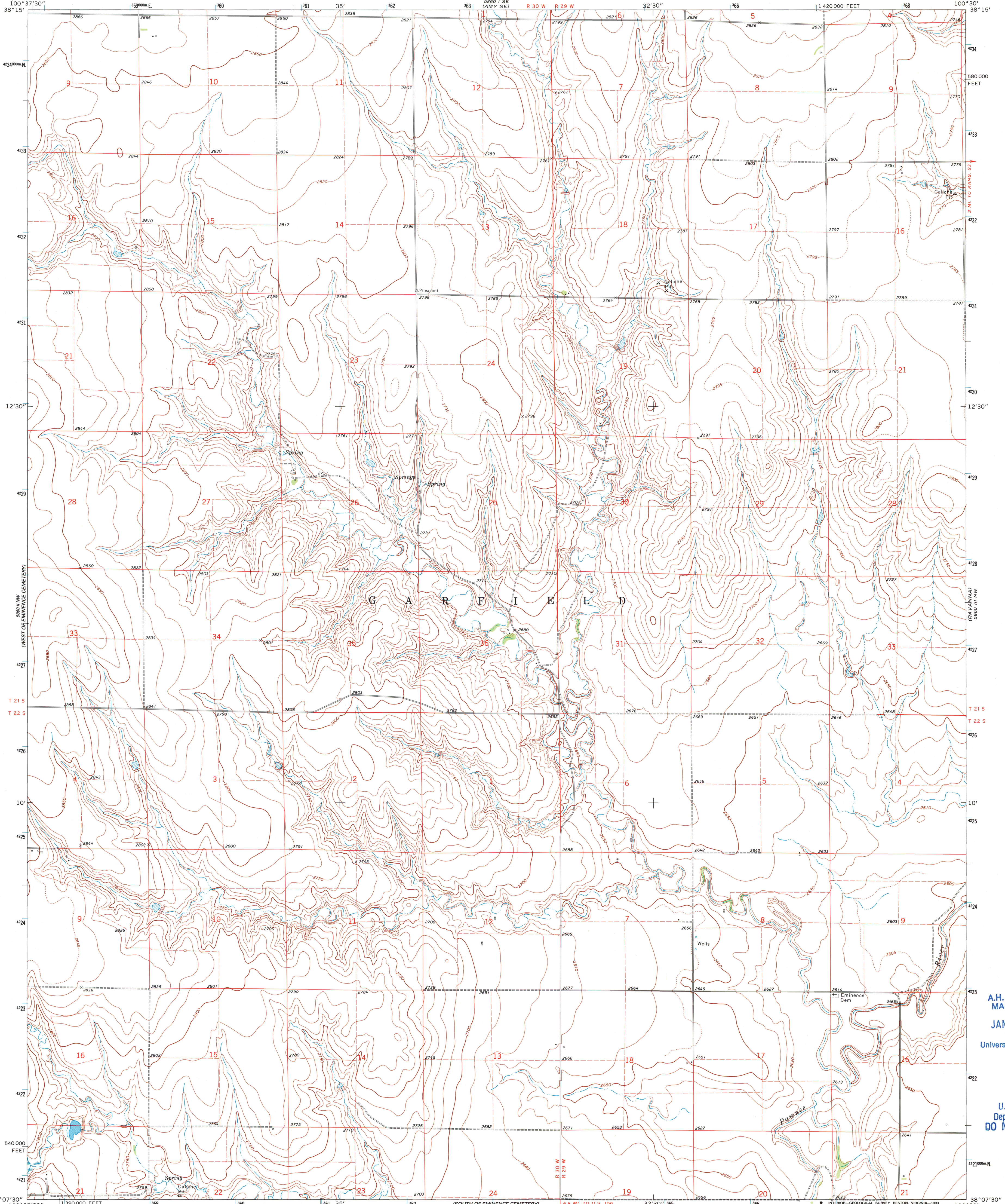


38°07'30" N
100°37'30" W
(NORTH OF PIERCE VILLE)
5860 1/2 SW
(4167 1/2 SW)

UNITED STATES
DEPARTMENT OF THE INTERIOR
GEOLOGICAL SURVEY

EMINENCE CEMETERY QUADRANGLE
KANSAS-FINNEY CO.
7.5 MINUTE SERIES (TOPOGRAPHIC)

38°07'30" N
100°37'30" W
(KALLESTA SW)
5860 1/2 SW
(4167 1/2 SW)



(NORTH OF PIERCE VILLE)
5860 1/2 SW
(4167 1/2 SW)

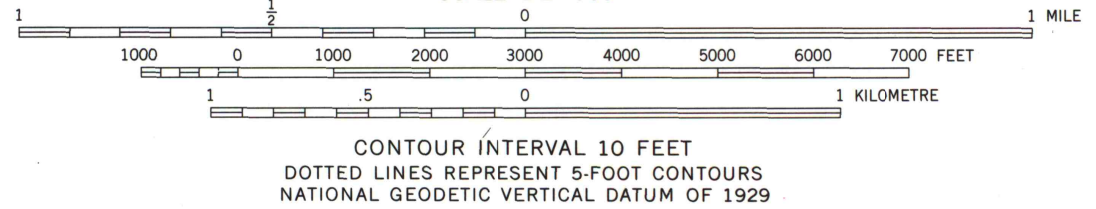
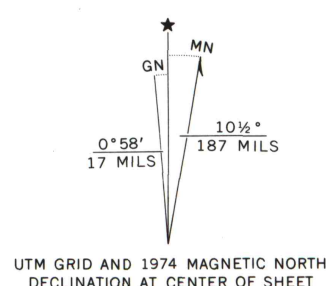
Mapped, edited, and published by the Geological Survey

Control by USGS and NOS/NOAA

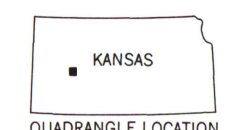
Topography by photogrammetric methods from aerial photographs taken 1973. Field checked 1974

Projection and 10,000-foot grid ticks: Kansas coordinate system, south zone (Lambert conformal conic)
1000-metre Universal Transverse Mercator grid ticks, zone 14, shown in blue. 1927 North American datum

Fine red dashed lines indicate selected fence and field lines where generally visible on aerial photographs. This information is unchecked



THIS MAP COMPLIES WITH NATIONAL MAP ACCURACY STANDARDS
FOR SALE BY U.S. GEOLOGICAL SURVEY, DENVER, COLORADO 80225, OR RESTON, VIRGINIA 22092
AND STATE GEOLOGICAL SURVEY, LAWRENCE, KANSAS 66044
A FOLDER DESCRIBING TOPOGRAPHIC MAPS AND SYMBOLS IS AVAILABLE ON REQUEST



ROAD CLASSIFICATION

Primary highway, hard surface	Light-duty road, hard or improved surface
Secondary highway, hard surface	Unimproved road
Interstate Route	U.S. Route
	State Route

EMINENCE CEMETERY, KANS.
(FORMERLY SCOTT CITY 4 NE)
38100-B5-TF-024

1974

DMA 5860 II NE - SERIES V878

A.H. ROBINSON
MAP LIBRARY
JAN 20 1994
University of Wisconsin
Madison

U.S. Regional
Depository Copy
DO NOT DISCARD

38°07'30" N
100°37'30" W
(KALLESTA SW)
5860 1/2 SW
(4167 1/2 SW)