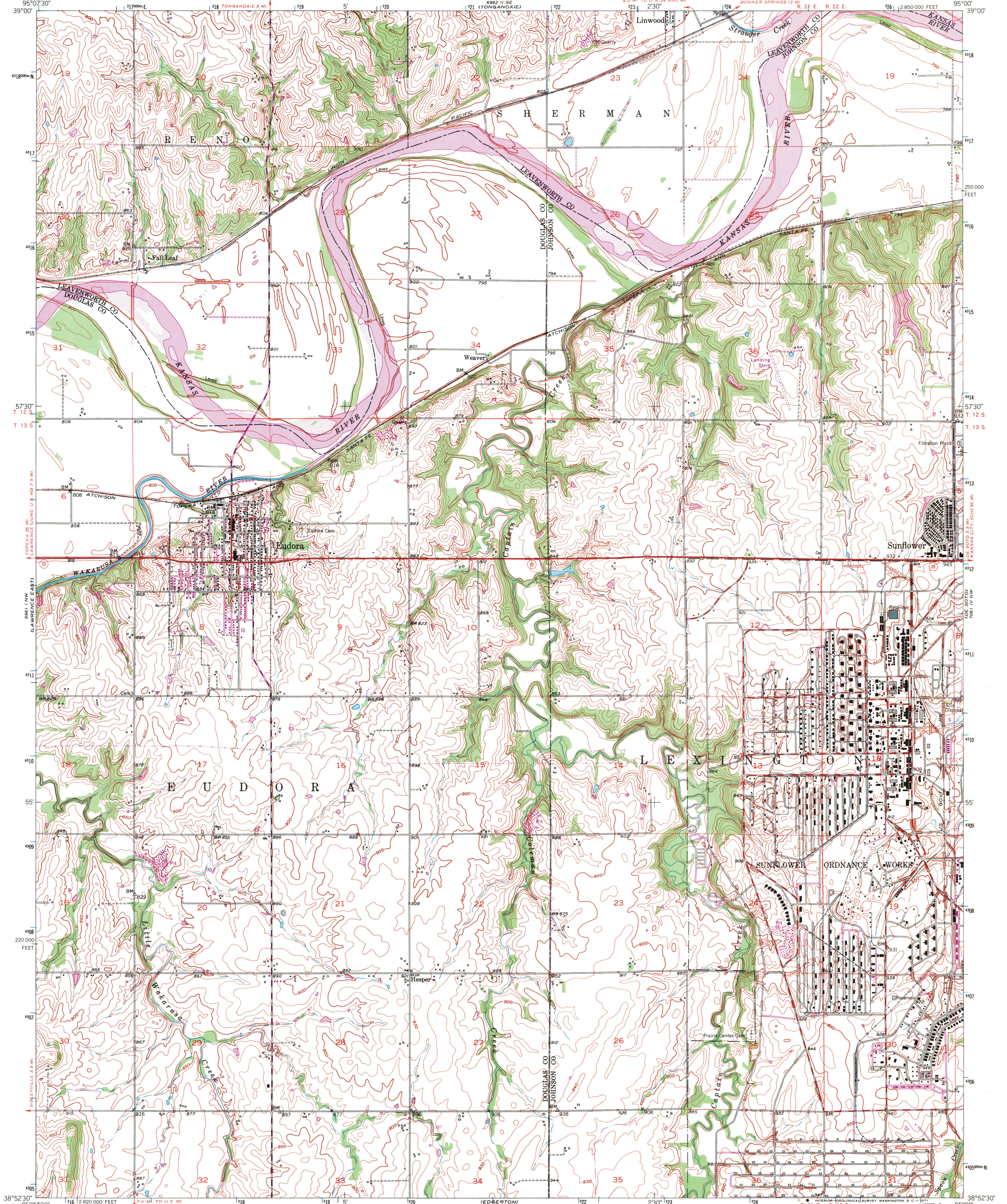


UNITED STATES  
DEPARTMENT OF THE INTERIOR  
GEOLOGICAL SURVEY

EUDORA QUADRANGLE  
KANSAS  
7.5 MINUTE SERIES (TOPOGRAPHIC)



Mapped, edited, and published by the Geological Survey

Control by USGS, USC&GS, and Kansas Geological Survey

Topography from aerial photographs by multiplex methods and by plane-table surveys 1951. Aerial photographs taken 1948

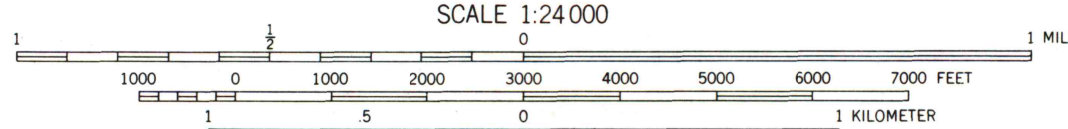
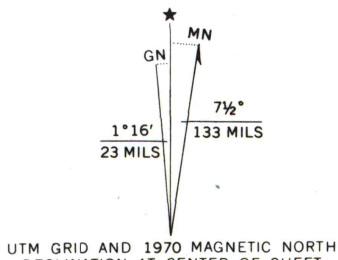
Field check 1951

Polyconic projection. 1927 North American datum

10,000-foot grid based on Kansas coordinate system, north zone

1000-meter Universal Transverse Mercator grid ticks, zone 15, shown in blue

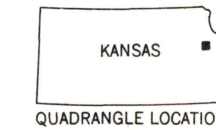
Revisions shown in purple compiled from aerial photographs taken 1970. This information not field checked



CONTOUR INTERVAL 10 FEET  
DATUM IS MEAN SEA LEVEL

THIS MAP COMPLIES WITH NATIONAL MAP ACCURACY STANDARDS  
FOR SALE BY U. S. GEOLOGICAL SURVEY, DENVER, COLORADO 80225, OR WASHINGTON, D. C. 20242  
AND BY THE STATE GEOLOGICAL SURVEY, LAWRENCE, KANSAS 66045  
A FOLDER DESCRIBING TOPOGRAPHIC MAPS AND SYMBOLS IS AVAILABLE ON REQUEST

ROAD CLASSIFICATION  
Heavy-duty ——— 4 LANE 6 LANE Light-duty ———  
Medium-duty ——— 4 LANE 6 LANE Unimproved dirt ———  
U. S. Route ——— State Route ———



EUDORA, KANSAS  
N 3852.5—W 9500/7.5

1951  
PHOTOREVISED 1970  
AMS 6961 I NE—SERIES V878

OCT 15 1971

University of Wisconsin