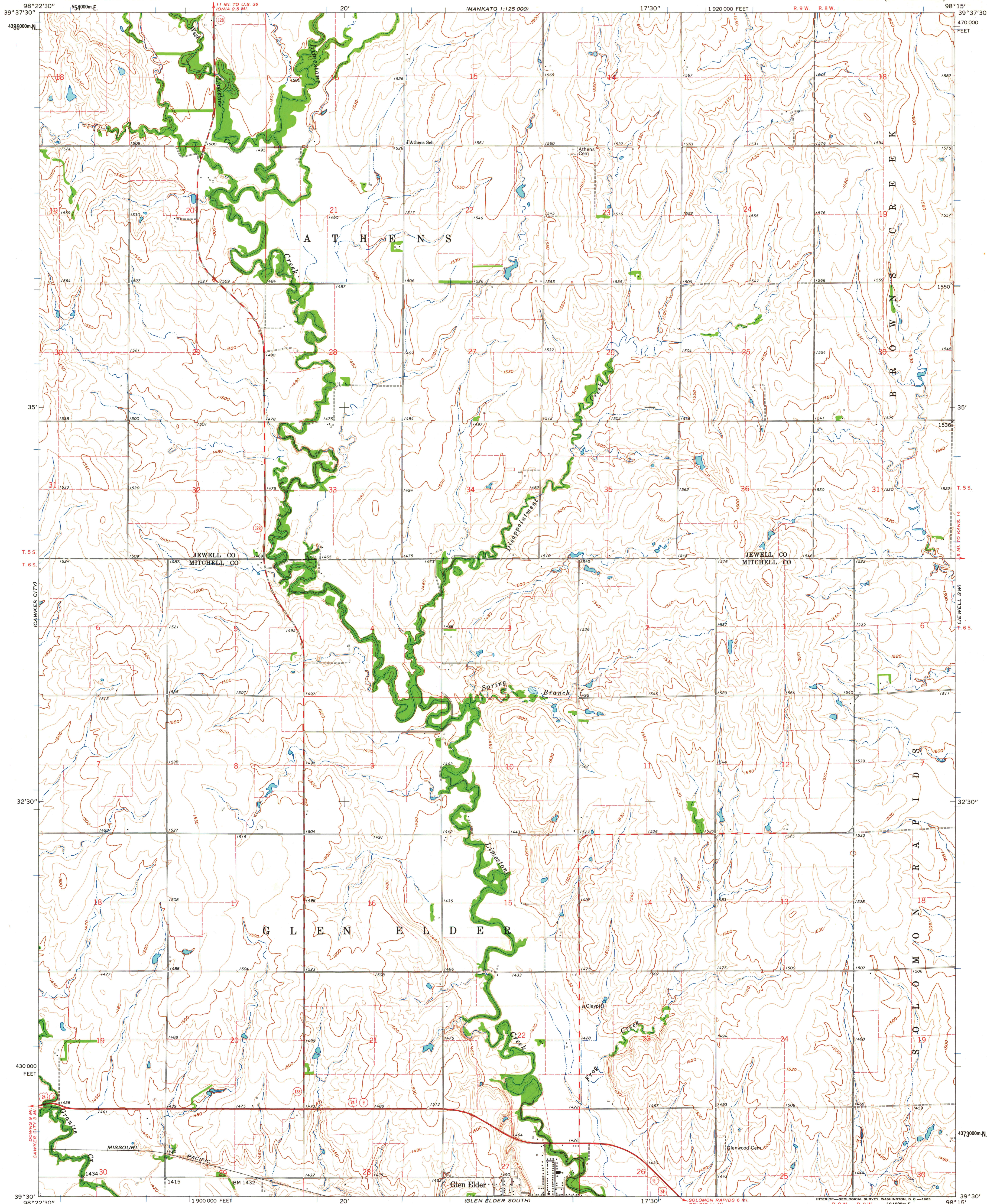
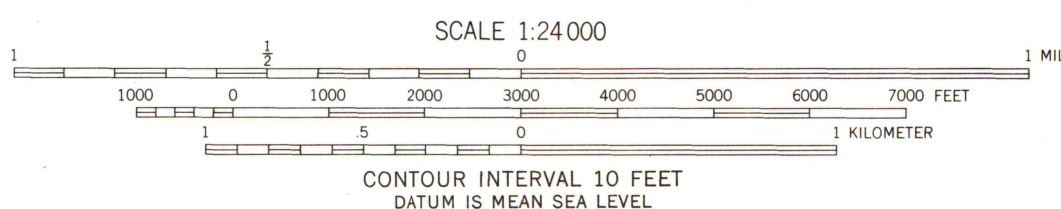


UNITED STATES  
DEPARTMENT OF THE INTERIOR  
GEOLOGICAL SURVEY

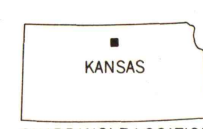
GLEN ELDER NORTH QUADRANGLE  
KANSAS  
7.5 MINUTE SERIES (TOPOGRAPHIC)



Mapped, edited, and published by the Geological Survey  
as part of the Department of the Interior program  
for the development of the Missouri River Basin  
Control by USGS and USC&GS  
Topography by photogrammetric methods from aerial  
photographs taken 1960. Field checked 1962  
Polyconic projection. 1927 North American datum  
10,000-foot grid based on Kansas coordinate system, north zone  
1000-meter Universal Transverse Mercator grid ticks,  
zone 14, shown in blue  
Fine red dashed lines indicate selected fence and field lines where  
generally visible on aerial photographs. This information is unchecked



ROAD CLASSIFICATION  
Heavy-duty ——— Light-duty ———  
Medium-duty ——— Unimproved dirt ———  
U.S. Route ——— State Route ———



THIS MAP COMPLIES WITH NATIONAL MAP ACCURACY STANDARDS  
FOR SALE BY U. S. GEOLOGICAL SURVEY, DENVER 25, COLORADO OR WASHINGTON 25, D. C.  
AND BY THE STATE GEOLOGICAL SURVEY, LAWRENCE, KANSAS  
A FOLDER DESCRIBING TOPOGRAPHIC MAPS AND SYMBOLS IS AVAILABLE ON REQUEST

GLEN ELDER NORTH, KANS.  
N3930—W9815/7.5  
1962

MAP AND AIR PHOTO LIBRARY  
University of Wisconsin