

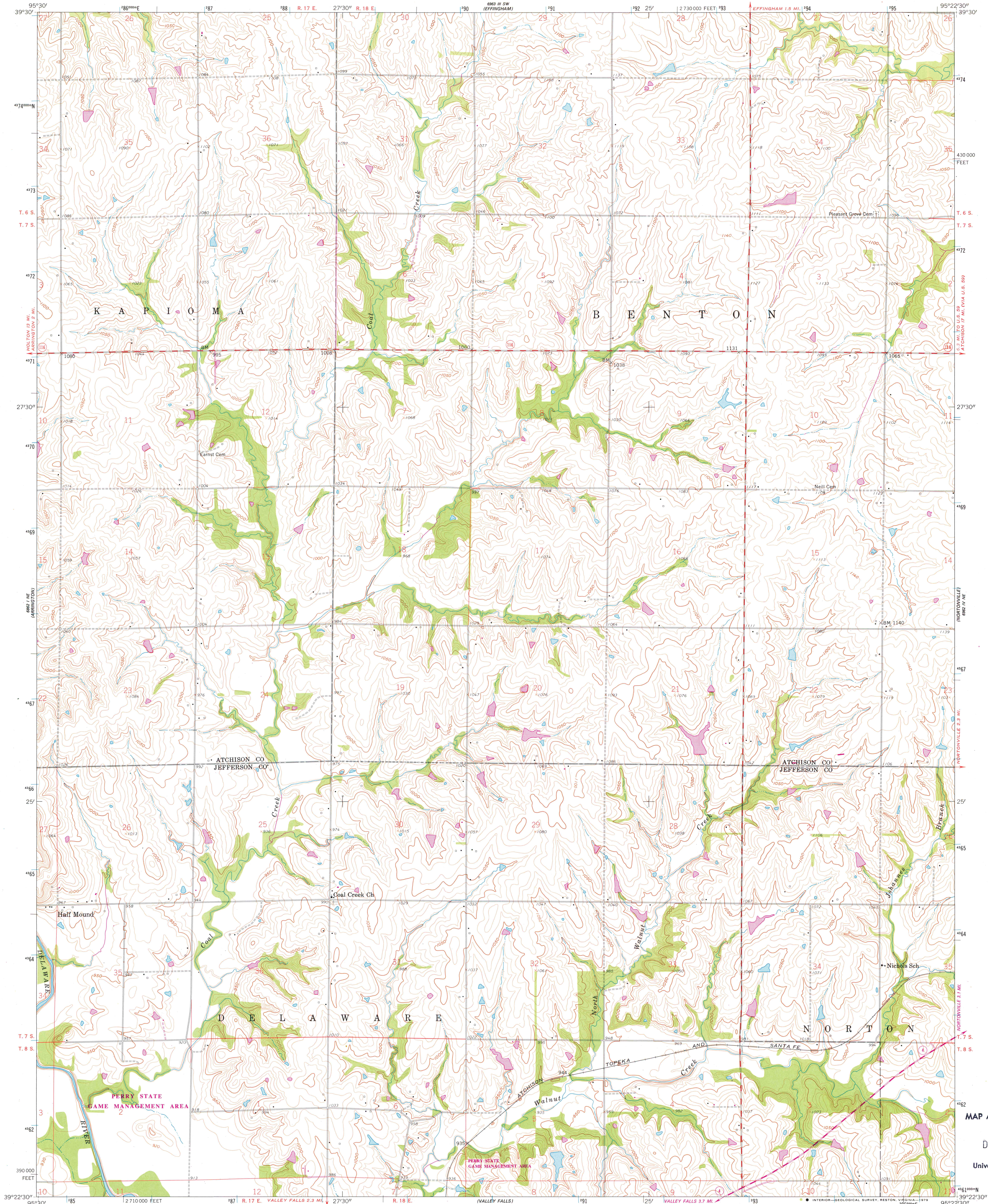
6862 IV SE
(UNCHECKED)
1987

UNITED STATES
DEPARTMENT OF THE INTERIOR
GEOLOGICAL SURVEY



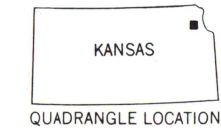
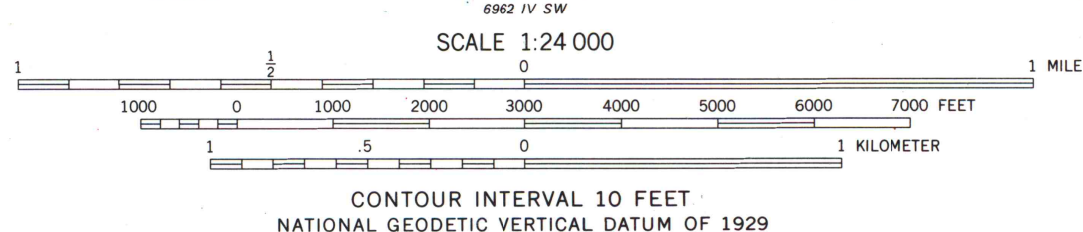
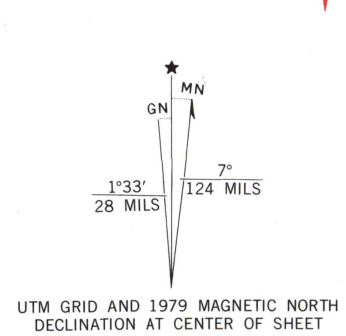
HALF MOUND QUADRANGLE
KANSAS
7.5 MINUTE SERIES (TOPOGRAPHIC)

6862 IV SE
(UNCHECKED)
1987



6862 IV SE
(UNCHECKED)
1987

Mapped, edited, and published by the Geological Survey
Control by USGS and USC&GS
Topography from aerial photographs by photogrammetric methods
Aerial photographs taken 1957. Field check 1959.
Polyconic projection. 1927 North American datum
10,000-foot grid based on Kansas coordinate system, north zone
To place on the predicted North American Datum 1983
move the projection lines 3 meters north and
22 meters east as shown by dashed corner ticks
1000-meter Universal Transverse Mercator grid ticks,
zone 15, shown in blue
There may be private inholdings within the boundaries of
the National or State reservations shown on this map
Revisions shown in purple compiled in cooperation with
State of Kansas agencies from aerial photographs taken
1978. Map edited 1979. This information not field checked



ROAD CLASSIFICATION
Medium-duty ——— Light-duty ———
Unimproved dirt ———
State Route ———

HALF MOUND, KANS.
N 3922.5—W 9522.5/7.5

1959
PHOTOREVISED 1979
DMA 6962 IV NW—SERIES V878

MAP AND AIR PHOTO
LIBRARY
DEC 10 1979
University of Wisconsin
Madison

6862 IV SE
(UNCHECKED)
1987